

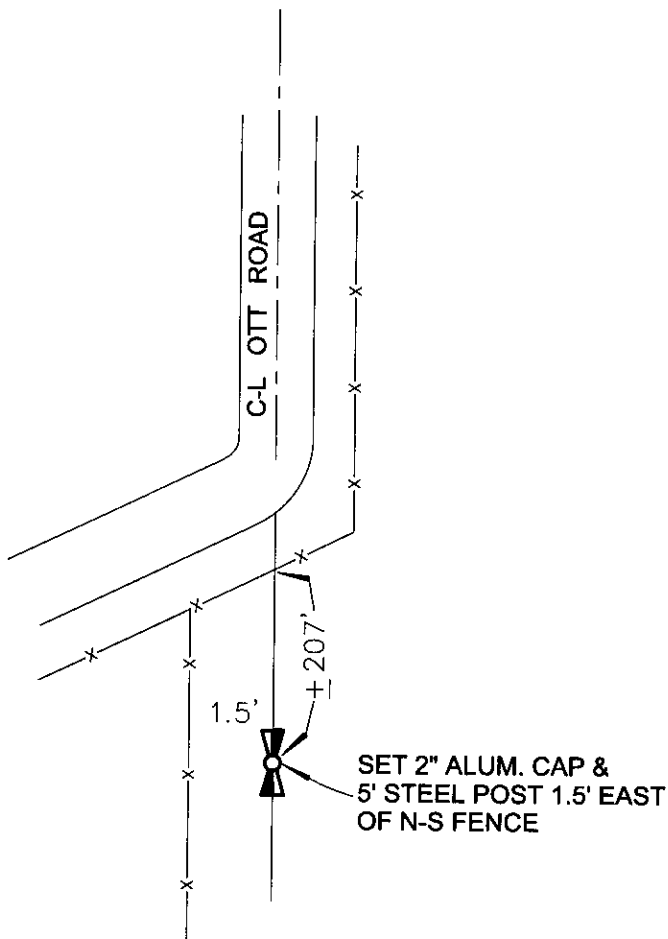
CERTIFIED CORNER RECORDATION

Corner E 1/4 SEC. 33 T. 2N. R. 24E. P.M.M. YELLOWSTONE County

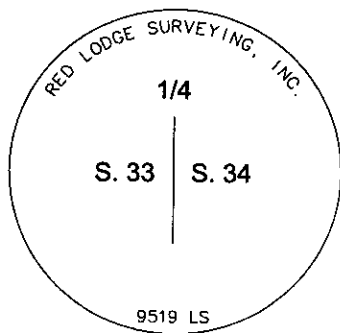
Original: Record per. 1891 GLO by George T. Lamport; Set a sandstone 16x12x4, 11 ins. in the ground for 1-4 Sec. Cor marked 1-4 on W. face, dug pits 18x18x12 ins. N. & S. of stone 5 1-2 ft. distance and raised a mound earth 4 1-2 ft. high, 3 1-2 ft. base alongside.

Evidence: No trace of original stone found.

Perpetuation: Established corner position latitudinally at proportionate measurement between the SE corner and NE corner of Sec. 33 and longitudinally by the centerline of the county road to the north and existing N-S fence.



See Certificate of Survey Number _____ for further information



SKETCH OF CORNER

CERTIFICATION

I, Brent Nearpass
 certify the information shown herein is true and correct.
 Signature: Brent Nearpass
 Title: Group Party Chief

I, Neil A. Bratton, Jr.
 certify that this Corner Record correctly represents work performed by me or under my direct supervision in compliance with the "Corner Recordation Act" (7-92-101, et seq., M.C.A.).
 Signature: Neil A. Bratton, Jr.
 Title: Surveyor & Seal
 No. 9519 LS
 Date: 5-4-2005
 Employer: Red Lodge Surveying, Inc.

Office of Clerk and Recorder, County of Yellowstone



3340754

Page: 1 of 1
07/19/2005 02:41P

In book no. _____

County Official _____

Cross Index No. X-13 T. 2N. R. 24E. PMM

Adopted July 1, 1981, Montana Board of Professional Engineers & Land Surveyors

Section 33

● corner this sheet