

3472174

Page: 1 of 1
07/08/2008 02:10P

3898

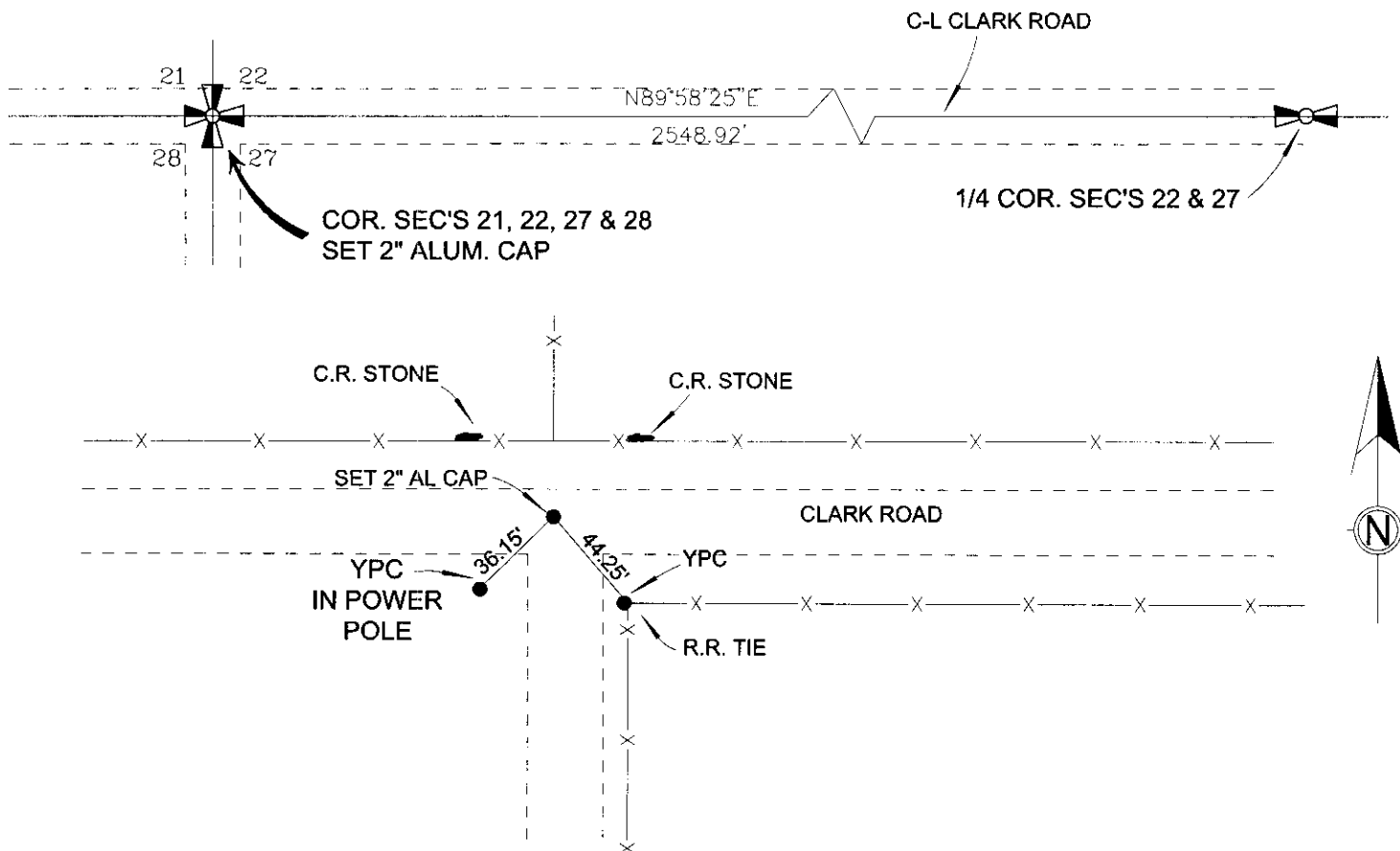
CERTIFIED CORNER RECORDATION

Corner SECTIONS 21,22,27 & 28 T. 2 N. R. 24 E. P.M.M. YELLOWSTONE County

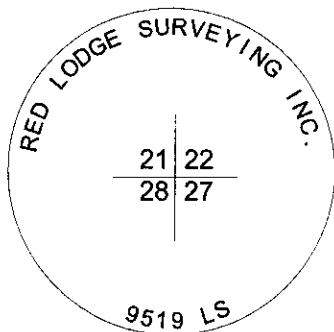
Original: PER GLO SURVEY VIA LAMPORT, 1891, SET A SANDSTONE 20X5X2 INS., 15 INS. IN THE GROUND. FOR COR. TO SECS. 21,22,27 & 28, MARKED 2 NOTCHES ON S. & 3 NOTCHES ON E. EDGES, DUG PITS 18X18X12 INS. IN EACH SEC. 5 1/2 FT DISTANT, AND RAISED A MOUND OF EARTH 2 FT HIGH 4 1/2 FT BASE ALONGSIDE.

Evidence: ORIGINAL STONE LOST TO ROAD CONSTRUCTION AT OLD FOUR WAY INTERSECTION. FOUND COUNTY ROAD STONES IN R/W FENCE AT THE NORTHWEST AND NORTHEAST CORNERS OF THE INTERSECTION. RE-ESTABLISHED CORNER POSITION PER DISTANCE/DISTANCE INTERSECTION FROM FOUND C.R. STONES.

Perpetuation: SET 2" STAMPED AL. CAP ON A NO. 5 REBAR 24" LONG IN CENTERLINE COUNTY ROAD .4' BELOW SURFACE, NAILED 1 1/2" YELLOW PLASTIC CAP SOUTHEAST OF CORNER IN R.R. TIE FENCE POST A DISTANCE OF 44.25'. NAILED 1 1/2" YELLOW PLASTIC CAP SOUTHWEST OF CORNER IN POWER POLE A DISTANCE OF 36.15'.

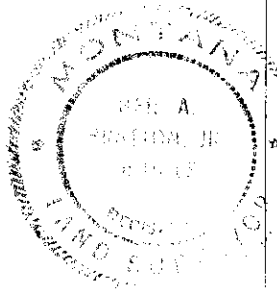


See Certificate of Survey Number 3262 for further information



2" AL CAP

SKETCH OF CORNER



CERTIFICATION

BRENT NEARPASS

certify the information shown herein is true and correct.

Brent Nearpass
Signature Ground Party Chief

NEIL A. BRATTON JR

certify that this Corner Record correctly represents work performed by me or under my direction in compliance with the "Corner Recordation Act" (70-22-101, et seq., M.C.A.)

Neil A. Bratton Jr
Signature of Surveyor & Seal

Date: Feb. 2006 Reg. No. 9519 LS

Employer: RED LODGE SURVEYING INC.

Office of Clerk and Recorder, County of Yellowstone

This "corner record" was filed for record on _____

was noted on the cross-index plat and is assigned page No. _____

In book No. _____

County Official _____

Cross Index No. R 13 T. 2 N. R. 24 E. PMM

Adopted July 1, 1981, Montana Board of Professional Engineers & Land Surveyors

Section 28

• corner this sheet