

161094

INSTRUCTIONS

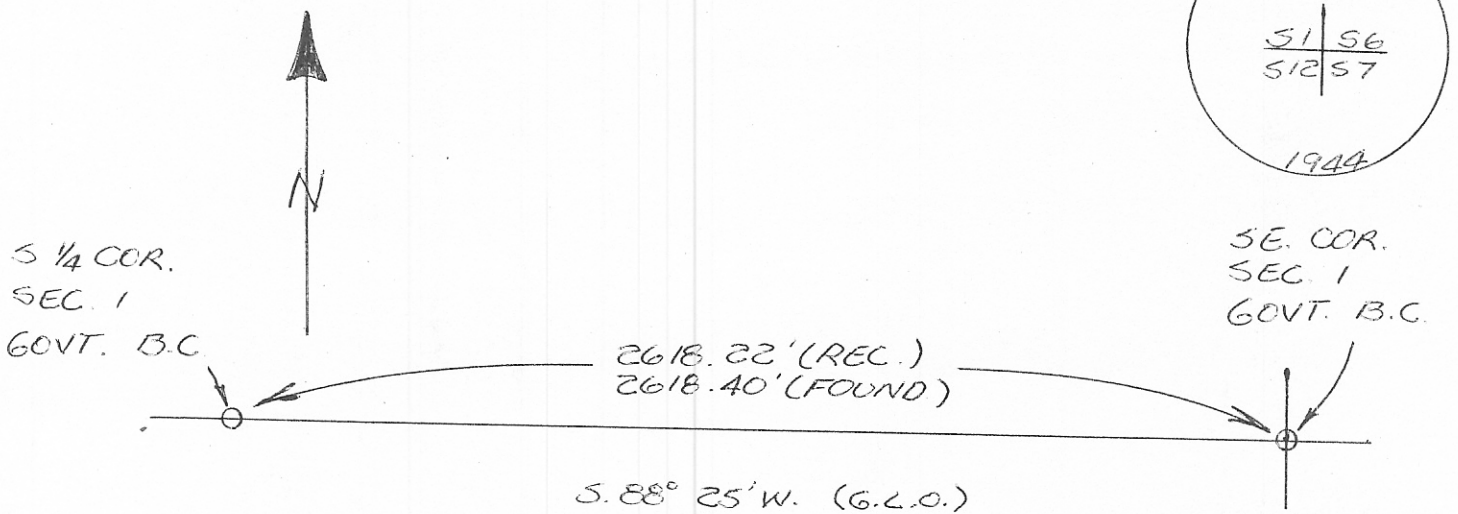
1. On ... d/or subsequent record used to evaluate the corner position.
2. Description of evidence found, note discrepancies in the record, state method of establishing lost or obliterated corners.
3. Description of monument and accessories set to perpetuate the corner position.
4. Sketch of corner, show all pertinent data which can best be shown in a sketch example, corner marking, topography ties, position of accessories, etc.
5. Certification must be signed and sealed by Land Surveyor registered in the State of Montana.
6. Fill in Cross Index & Section Diagram at bottom of sheet.

CERTIFIED CORNER RECORDATION

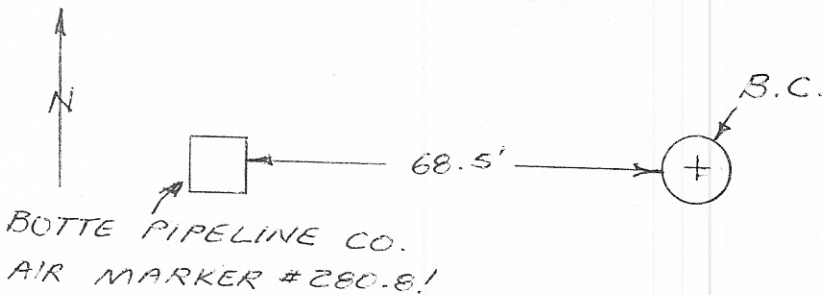
Corner SE COR., SECTION 1 T. 2N R. 57E P.M.M. CARTER County

1. FOUND GOVT. BRASS CAP, 12" ABOVE GROUND. CAP MARKED AS SHOWN.

2. SEE SKETCHES FOR TIES.



SEE ABOVE FOR DETAILS



SKETCH OF CORNER

CERTIFICATION

I, Bob Stanhope  
certify the information shown herein is true and correct.

Bob Stanhope  
Signature Ground Party Chief

I, DAVID L. ZIMMERMAN  
certify that this Corner Record correctly represents work performed by me or under my direction in compliance with the "Corner Recordation Act" (70-22-101 et seq. M.C.A.)

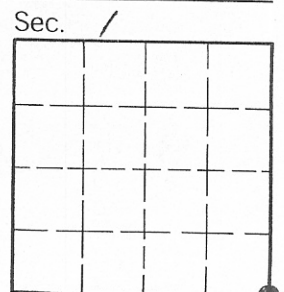
David L. Zimmerman  
Signature of Surveyor & Seal

Date: 10/17/88 Reg. No. 82395

Employer: W.B.I. PIPELINE CO.

Office of Clerk and Recorder, County of Carter. This "corner record" was filed for record on 10-30-88 was noted on the cross-index plat and is assigned page No. \_\_\_\_\_, in book No. \_\_\_\_\_

Sandra Kirkwood  
County Official



• - corner this sheet

161094

Cross Index No. E-25 T. 2N R. 57E P.M.M.