

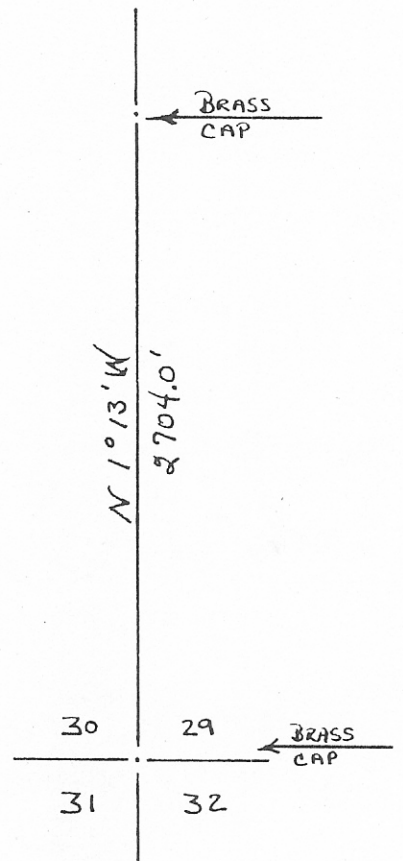
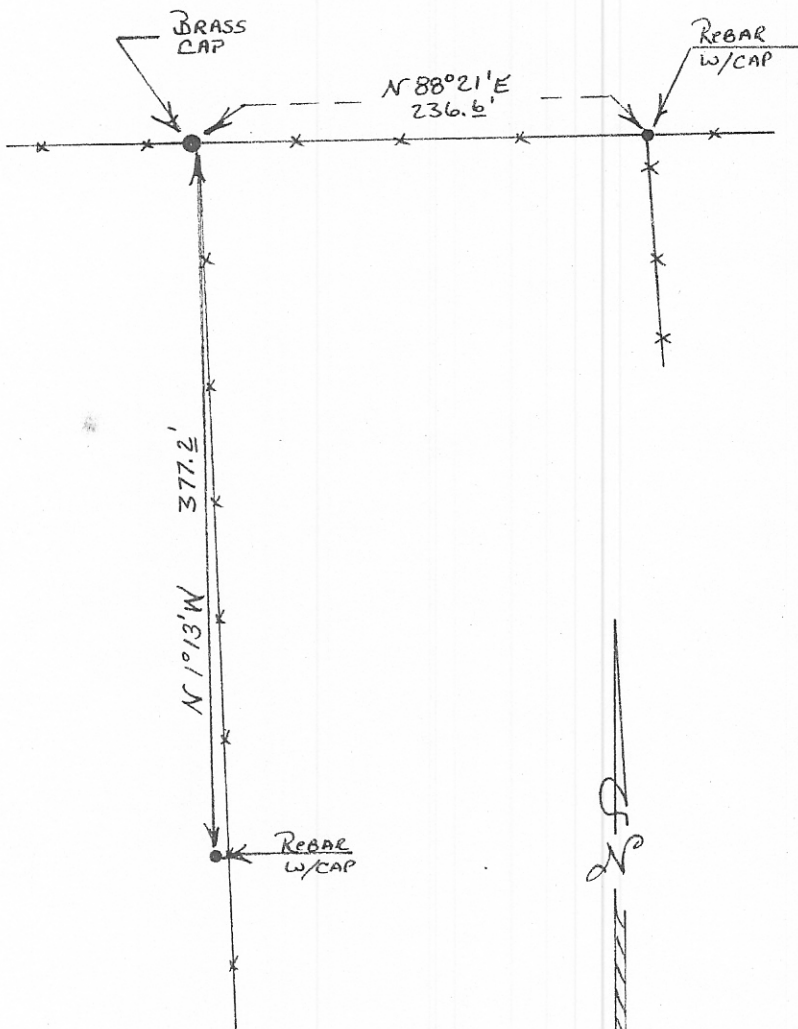
**INSTRUCTIONS**

1. and/or subsequent record used to evaluate the corner position.
2. Description of evidence found, note discrepancies in the record, state method of establishing lost or obliterated corners.
3. Description of monument and accessories set to perpetuate the corner position.
4. Sketch of corner, show all pertinent data which can best be shown in a sketch example, corner marking, topography ties, position of accessories, etc.
5. Certification must be signed and sealed by Land Surveyor registered in the State of Montana.
6. Fill in Cross Index & Section Diagram at bottom of sheet.

**CERTIFIED CORNER RECORDATION 159506**

WEST QUARTER  
 Corner SECTION 29 T. 2N R. 58E P.M.M. CARTER County

FOUND GOVERNMENT BRASS CAP MONUMENT. REFERENCED ACCORDING TO THE SKETCH BELOW:



**SKETCH OF CORNER**

**CERTIFICATION**

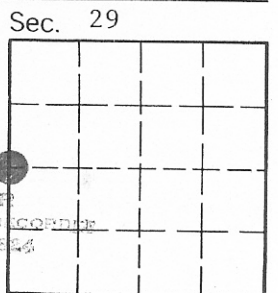
I, Charles M. Madler  
 certify the information shown herein is true and correct.  
*Charles M. Madler*  
 Signature Ground Party Chief

I, Charles M. Madler  
 certify that this Corner Record correctly represents work performed by me or under my direction in compliance with the "Corner Recordation Act" (70-22-101, et seq., M.C.A.)  
*Charles M. Madler*  
 Signature of Surveyor & REGISTERED PROFESSIONAL LAND SURVEYOR

Date: 8-19-86 Reg. No. 7327  
 Employer: Professional Land Services

Office of Clerk and Recorder, County of Carter. This "corner record" was filed for record on Sept 5, 1986 was noted on the cross-index plat and is assigned page No. 120, in book No. 1

*Jane M. Brewster*  
 JANE M. BREWSTER  
 CARTER COUNTY CLERK AND RECORDER  
 HELENA, MONTANA 59604  
 County Official



159506

Cross Index No. T-5 T. 2N R. 58E PMM

• - corner this sheet