

INSTRUCTIONS

1. and/or subsequent record used to evaluate the corner position.
2. Description of evidence found, note discrepancies in the record, state method of establishing lost or obliterated corners.
3. Description of monument and accessories set to perpetuate the corner position.
4. Sketch of corner, show all pertinent data which can best be shown in a sketch example, corner marking, topography ties, position of accessories, etc.
5. Certification must be signed and sealed by Land Surveyor registered in the State of Montana.
6. Fill in Cross Index & Section Diagram at bottom of sheet.

162715

CERTIFIED CORNER RECORDATION

Corner East Quarter Cor. Sec 32 T. 2 N., R. 58 E. P.M.M. Carter County

ORIGINAL RECORD: Surveyed by George Scheets in 1889.

Set a pine post 3 ft long, 4 ins. sq. with marked stone 12 ins in the ground for 1/4 Sec. Cor. marked 1/4 S on the west face, dug pits 18 x 18 x 12 ins N & S of post 5 1/2 ft. dist. and raised a mound of earth 1 1/2 ft high, 3 1/2 ft base around post.

SUBSEQUENT RECORD: Dependently resurveyed by W.R. Bandy and Ernest Parker in 1944.

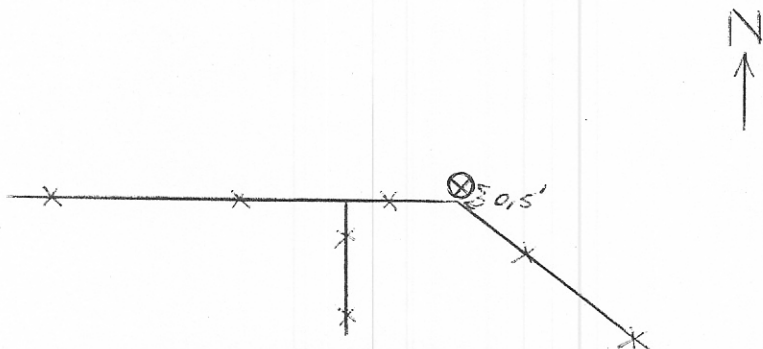
Point for the 1/4 sec cor for secs 32 and 33 determined at the intersection of long established property lines. At the point for the corner at a fence corner, where fences bear N., S., E., and W.

Set an iron post, 3 ft. long, 1 in. diam., 30 ins. in the ground, with brass cap marked:

1/4
|
S32|S33
|
1944

FOUND : Brass cap marked as per subsequent record at fence intersection. no pits found.

SET : Monument in good repair. nothing new set.



SKETCH OF CORNER

CERTIFICATION

I, Quinn Wright
certify the information shown herein is true and correct.

Quinn Wright
Signature Ground Party, Clerk

I, Jimmie L. Hume
certify that this Corner Record properly represents work performed by me or under my direction in compliance with the "Corner Recordation Act" (70-22-101, 71-545, M.C.A.)

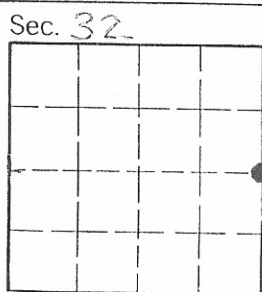
Jimmie L. Hume
Signature of Surveyor & Seal

Date: 9-17-90 Reg. No. 355

Employer: Prairie States/HKM

Office of Clerk and Recorder, County of Carter. This "corner record" was filed for record on October 9, 1990 was noted on the cross-index plat and is assigned page No. _____, in book No. _____

Pamela J. Castleberry
County Official



• - corner this sheet

Cross Index No. X-9 T. 2N R. 58E P.M.M.

162715