

112421
CERTIFIED LAND CORNER RECORDATION

DESCRIPTION OF CORNER EVIDENCE FOUND, AND ORIGINAL RECORD (IF KNOWN)

Found: Brass cap in concrete monument set and recorded as 1/4 corner Sec 8/17, T4N, R10W.

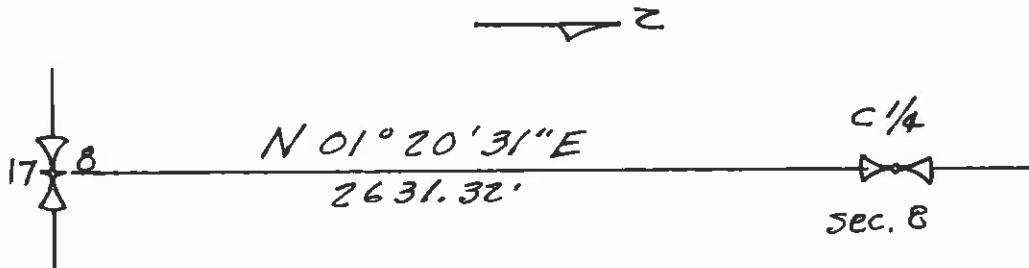
Record: As per record in deed books, the latest record in Deed Book No. 20, Page No. 147 in Deer Lodge County Courthouse.

DESCRIPTION OF MONUMENT AND ACCESSORIES ESTABLISHED TO PERPETUATE THE ORIGINAL LOCATION OF THIS CORNER:

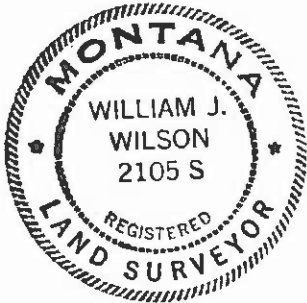
Date of work: *MAY 1978*

No additional description or accessories required.

SKETCH, WITH COURSE AND DISTANCE TO ADJACENT CORNERS IF DETERMINED IN THIS SURVEY. (MAY SKETCH OR PASTE REPRODUCTION ON REVERSE SIDE.)



Surveyor's Seal



I,, certify that the information shown herein is true and correct.

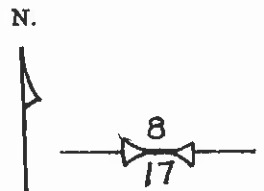
Signature of Ground Party Chief

I, *Wm John Wilson* certify that I have carefully performed or reviewed the work done on the diagrammed corner as reported on this recordation form and approve the same.

Wm John Wilson
 Signature of Surveyor

2105-S
 Registration Number

DIAGRAM OF CORNER:



T4N, R10W, M.P.M.
 = Corner recorded on the sheet

Office of Clerk and Recorder, County of *Deer Lodge*

This "corner record" was filed for record on the *18* day of *Sept* 19 *78* was noted on the cross-index plat and is assigned page No. *216*, in book No. *1*

Foley Blume
 County Official