

CEP TIED LAND CORNER RECORD/ 7N

(REFERENCE FSM 7153.53)

118 & 28

DESCRIPTION OF CORNER EVIDENCE FOUND, AND ORIGINAL RECORD (IF KNOWN)

ORIGINAL - Not Available

FOUND: No evidence of an original corner in the area. After measuring to establish corners, 1 mile east, 1 mile north and 1 mile west and to a fence line and road centerline 1 mile south, I determined a proportioned position for the corner. I reject this position as violating long established use patterns.

DESCRIPTION OF MONUMENT AND ACCESSORIES ESTABLISHED TO PERPETUATE THE ORIGINAL LOCATION OF THIS CORNER:

Date of work: NOV. 24, 1981

I accept the location of the centerline of a little used but at one time ditched road to the south as evidence for easting for the corner. I split the right-of-way fences on the county road to the east for northing for the corner. At this position I set a 1 1/2" brass cap marked as shown below.

A fence post with aluminum nail in east side and yellow MARLS tag bears S.17°W, 33.19'
A fence post with aluminum nail in west side and yellow MARLS tag bears S.21 1/2°E, 33.75'

SKETCH, WITH COURSE AND DISTANCE TO ADJACENT CORNERS IF DETERMINED IN THIS SURVEY. (MAY SKETCH OR PASTE REPRODUCTION ON REVERSE SIDE.)

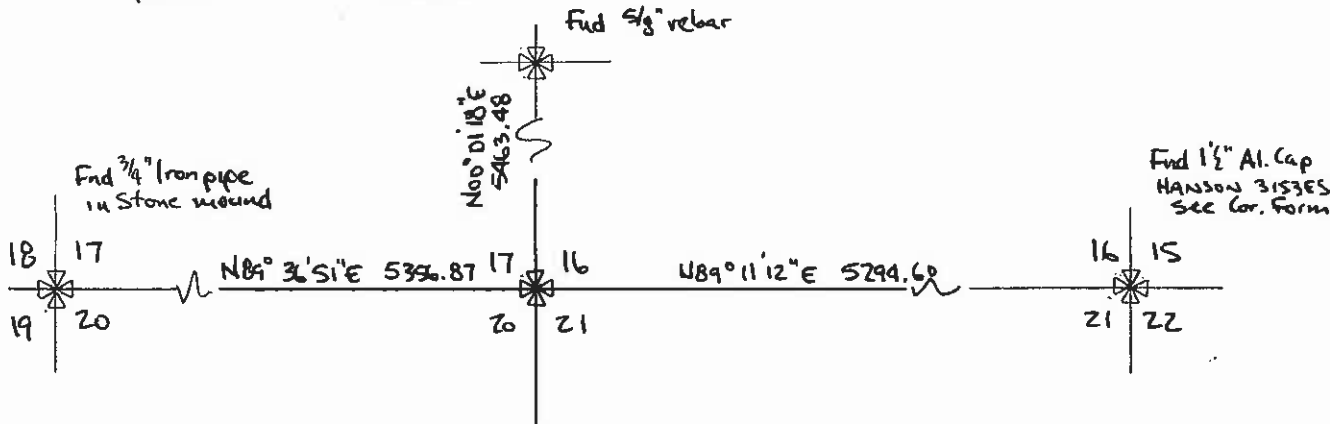


DIAGRAM OF CORNER:

Surveyor's Seal

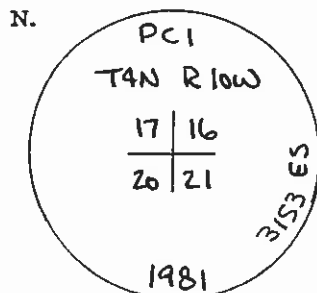


I, _____ certify that the information shown herein is true and correct.

Signature of Ground Party Chief

I, Thomas M. Hanson, certify that I have carefully performed or reviewed the work done on the diagrammed corner as reported on this recordation form and approve the same.

Signature of Surveyor



= Corner recorded on the sheet

3153ES Registration Number

Office of Clerk and Recorder, County of Deer Lodge
this "corner record" was filed for record on the 7th day of Dec 1981, was noted on the cross-index plat and is signed page No. 242, in book No. 1

MARY C. CHOR CLERK & RECORDER ANACONDA-DEER LODGE COUNTY ANACONDA, MT 59711 Deputy County Official

Cross Index No. N-9 T 4N R 10W Mer.