

102.398"

CERTIFIED LAND CORNER RECORDATION

DESCRIPTION OF CORNER EVIDENCE FOUND, AND ORIGINAL RECORD (IF KNOWN)

At the full corner common to Sections 25, 26, 35 & 36, Township 4 North, Range 10 West, Principal Meridian Montana, Deerlodge County, Montana.

RECORD: Set corner to Sec 25, 26, 35 & 36 a post in mound of earth with pits charred stake and as per instructions.

DESCRIPTION OF MONUMENT AND ACCESSORIES ESTABLISHED TO PERPETUATE THE ORIGINAL LOCATION OF THIS CORNER:

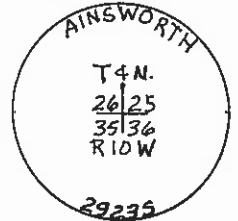
Date of work: 9/19/74

WE ESTABLISH this corner by use of stationing and ties from Montana Highway Dept. plans fits old jack fence to South.

TO PERPETUATE this corner we set a 5/8" X 24" copper clad brass capped monument and establish the following reference monuments:

A 10"X10"X8' post 2' in ground bears S.55°00'E., 5.4 feet.

Variance used E.19°



SKETCH, WITH COURSE AND DISTANCE TO ADJACENT CORNERS IF DETERMINED IN THIS SURVEY. (MAY SKETCH OR PASTE REPRODUCTION ON REVERSE SIDE.)

Surveyor's Seal

I, GREGORY S. MARTINSEN certify that the information shown herein is true and correct.

Signature of Gregory S. Martinсен

Signature of Ground Party Chief

RICHARD A. AINSWORTH

I, RICHARD A. AINSWORTH certify that I have carefully performed or reviewed the work done on the diagrammed corner as reported on this recordation form and approve the same.

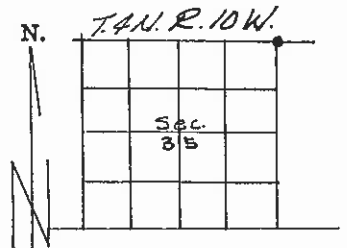
Signature of Richard A. Ainsworth

Signature of Surveyor

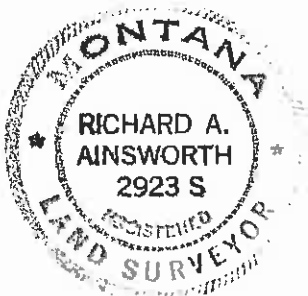
29235

Registration Number

DIAGRAM OF CORNER:



● = Corner recorded on the sheet



Office of Clerk and Recorder, County of Deer Lodge

This "corner record" was filed for record on the 30 day of Sept. 1974 was noted on the cross-index plat and is

assigned page No. 124, in book No. 1

by Mary J. Murphy County Official