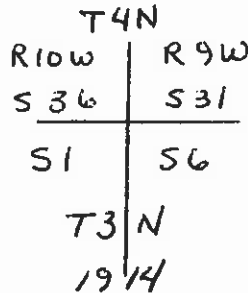


112838  
**CERTIFIED LAND CORNER RECORDATION**

DESCRIPTION OF CORNER EVIDENCE FOUND, AND ORIGINAL RECORD (IF KNOWN)

Corner Townships 3 & 4 North, Ranges 9 & 10 West

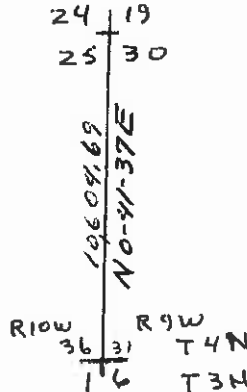
Record & Found - Set an iron post 3 ft. long 3 ins. in diameter  
 24 ins. in ground  
 Marked brass cap



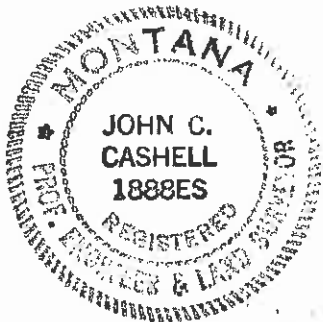
DESCRIPTION OF MONUMENT AND ACCESSORIES ESTABLISHED  
 TO PERPETUATE THE ORIGINAL LOCATION OF THIS CORNER:

Date of work: Oct. 1978

SKETCH, WITH COURSE AND DISTANCE TO ADJACENT CORNERS IF DETERMINED IN THIS SURVEY.  
 (MAY SKETCH OR PASTE REPRODUCTION ON REVERSE SIDE.)



Surveyor's Seal



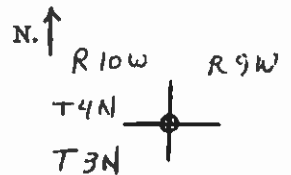
I, David M. Albert  
 certify that the information shown herein is true and correct.

*David M. Albert*  
 Signature of Ground Party Chief

I, John C. Cashell  
 certify that I have carefully performed or reviewed the work done on the diagrammed corner as reported on this recordation form and approve the same.

*John C. Cashell*  
 Signature of Surveyor

DIAGRAM OF CORNER:



o = Corner recorded on the sheet

1888 ES  
 Registration Number

Office of Clerk and Recorder, County of Deer Lodge

This "corner record" was filed for record on the 30th day of November 1978, was noted on the cross-index plat and is assigned page No. 219, in book No. 1

REGINA CONNOR *by Kelly Blume, Deputy*  
 County Official