

# CERTIFIED LAND CORNER RECORDATION

DESCRIPTION OF CORNER EVIDENCE FOUND, AND ORIGINAL RECORD (IF KNOWN)

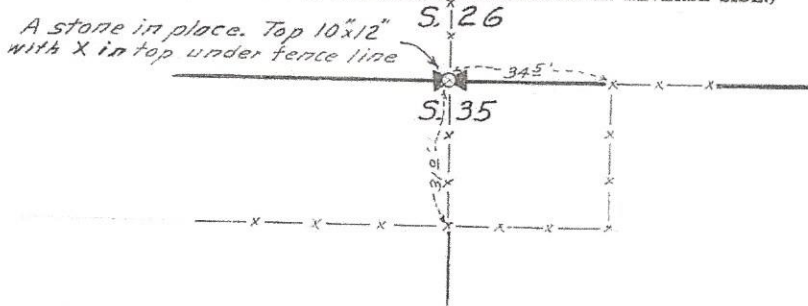
Original - A granite stone 15"X10"X8" for  $\frac{1}{4}$  Section corner pits and mound, August 20, 1869.  
 Found - A set stone in place 10"X12" with "X" on top, under fence line.

DESCRIPTION OF MONUMENT AND ACCESSORIES ESTABLISHED  
 TO PERPETUATE THE ORIGINAL LOCATION OF THIS CORNER:

Date of work: 10-17-69

Witnessed: The stone found to fence corner post 34.5 feet Due West and to post in fence line 31.0 feet Due South. Drove 5/8" re-bar in ground beside stone to help perpetuate corner for  $S\frac{1}{4}$  corner of Section 26, T. 4 S., R. 5 W., P.M.M., Madison, County, Montana.

SKETCH, WITH COURSE AND DISTANCE TO ADJACENT CORNERS IF DETERMINED IN THIS SURVEY.  
 (MAY SKETCH OR PASTE REPRODUCTION ON REVERSE SIDE.)



Surveyor's Seal



I, James B. Spring  
 certify that the information shown herein is true and correct.

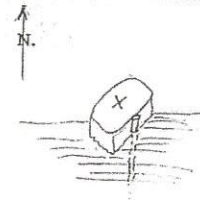
James B. Spring  
 Signature of Ground Party Chief

I, James B. Spring  
 certify that I have carefully performed or reviewed the work done on the diagrammed corner as reported on this recordation form and approve the same.

James B. Spring  
 Signature of Surveyor

1535-S  
 Registration Number

DIAGRAM OF CORNER:



= Corner recorded on the sheet

Office of Clerk and Recorder, County of Madison

This "corner record" was filed for record on the 2nd day of March, 1970, was noted on the cross-index plat and is assigned page No. 18, in book No. 1

Mary A. Myer  
 County Official

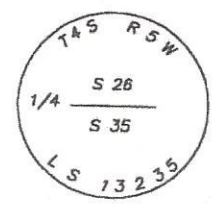
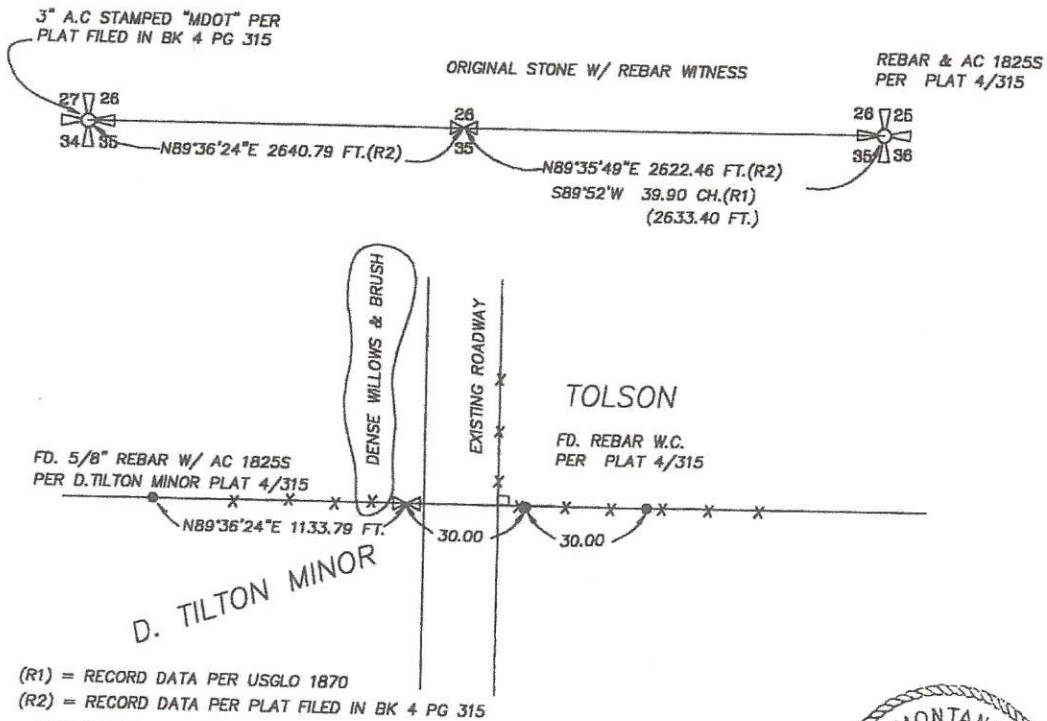
# CERTIFIED CORNER RECORDATION

Corner N 1/4 COR SEC 35 T. 4 S R. 5 W P.M.M. MADISON County

Original FEBRUARY 1870; SET A GRANITE STONE 15"X10"X8"

Evidence FOUND ORIG. STONE W/ REBAR WITNESS; DISTURBED DURING UTILITY CONST.

Perpetuation RE-ESTAB. PER W.C. D. TILTON MINOR SUB; BOOK 4 PAGE 315  
SET 5/8" REBAR W/ 3" A.C. STAMPED LS 13235 AND AS NOTED BELOW



SKETCH OF CORNER

MONTANA  
ERLAND GENDREAU  
13235LS  
LICENSED SURVEYOR

I, \_\_\_\_\_ certify the information above furnished to me by the client is true and correct.

Signature of Client: \_\_\_\_\_

I, ERLAND GENDREAU certify that this Corner Record was correctly re-established and performed by me or under my direct supervision in accordance with the "Corner Recordation Act" (70-26-101, et seq., M.C.A.)

Signature of Surveyor & Seal: Erland Gendreau

Date: \_\_\_\_\_ Reg. No. 13235

Company: Headwaters Eng. & Surv.

Office of Clerk and Recorder, County of MADISON. This "corner record" was filed for record on APRIL 25, 2000 at 10:11 A.M.

was noted on the cross-index plat and is assigned page No. 305, in book No. 6

*Erland Gendreau*  
County Official

**076310**

Cross Index No. \_\_\_\_\_ T. \_\_\_\_\_ R. \_\_\_\_\_ P.M.M.

Adopted July 1, 1981, Montana Board of Professional Engineers & Land Surveyors

Sec. 35

	●	

● corner this sheet