

CERTIFIED CORNER RECORDATION

Corner 1/4 24 T. 4 S. R. 50 E. P.M.M. Powder River County

1908 Original GLO record by George L. Elmer and Theodor O. Johnston, Book 5662 Page 13

"Set a sandstone, 12 x 10 x 5 ins., 8 ins. in the ground, for 1/4 sec. cor., marked 1/4 on W. face; and raise a mound of stone, 2 ft. base, 1 1/2 ft. high, W. of cor."

1992 Remonumentation by S. R. Smith

Found stone, 13 x 13 x 6 ins., 8 ins. in the ground, "1/4" faintly visible on Northeast face. At the position marked by the stone, set an aluminum pipe, 2 1/2 ins. diam., 30 ins. long, with 3 1/4 ins. diam. M.D.T. aluminum cap, marked as shown below. Buried the stone alongside monument and raise a collar of stone around monument.

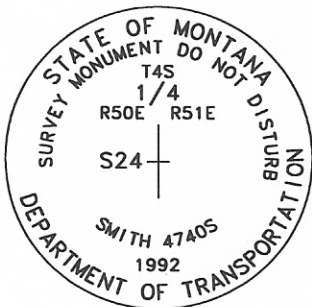
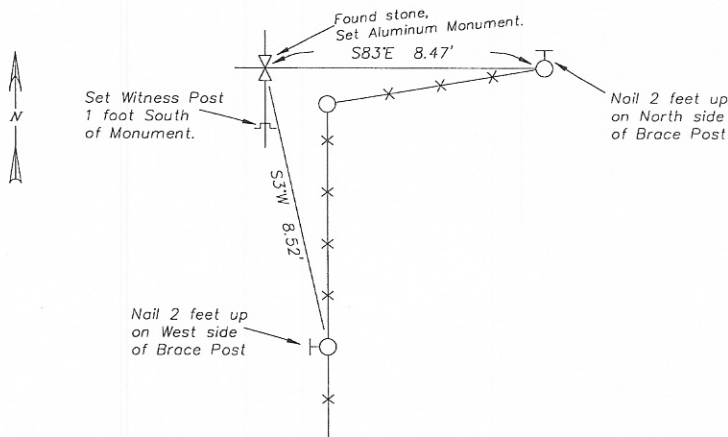
Established two references:

- An aluminum nail in brace post, north side, 2 ft. above ground, bears S.83°E., 8.47 ft. dist.
- An aluminum nail in brace post, west side, 2 ft. above ground, bears S.3°W., 8.52 ft. dist.

Set a galvanized steel witness post, 6 ft. long, with M.D.T. sticker attached, bears South, 1.0 ft. dist.

Measurements were made with a Silva hand compass (declination 13°E.) and a steel tape.

Refer to Certificate of Survey filed in conjunction with this corner recordation for ties to other section controlling corners in this area.



SKETCH OF CORNER

CERTIFICATION

I, S. R. Smith
 certify the information shown herein is true and correct.
S R Smith
 Signature Ground Party Chief

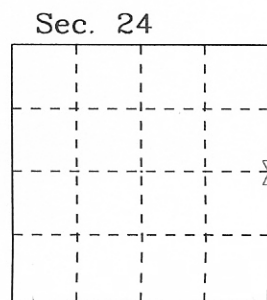
I, S. R. Smith
 certify that this Corner Record correctly represents work performed by me or under my direction in compliance with the "Corner Recordation Act" (79-22-101, et seq., M.C.A.)
S R Smith
 Signature of Surveyor & Seal

Reissue 8/3/98 Reg. No. 4740S
 Date: _____
 Employer: Smith Surveying

Office of Clerk and Recorder, County of Powder River. This "corner record" was filed for record on 2-18-99 @ 2:52 pm was noted on the cross-index plat and is assigned page No. 122933, in book No. Carol B. Richards, Deputy County Official

Indexed	✗
Compared	✓

Cross Index No. P-25 T. 4 S. R. 50 E. P.M.M.



Adopted July 1, 1981, Montana Board of Professional Engineers & Land Surveyors

✗ corner this sheet