

INSTRUCTIONS

1. ORIGINAL AND/OR SUBSEQUENT RECORD USED TO EVALUATE THE CORNER POSITION
2. DESCRIPTION OF EVIDENCE FOUND, NOTE DISCREPANCIES IN THE RECORD, STATE METHOD OF ESTABLISHING LOST OR OBLITERATED CORNERS.
3. DESCRIPTION OF MONUMENT AND ACCESSORIES SET TO PERPETUATE THE CORNER POSITION
4. SKETCH OF CORNER, SHOW ALL PERTINENT DATA THE CORNER POSITION
EXAMPLE, CORNER MARKINGS, TOPOGRAPY TIES, POSITION OF ACCESSORIES, ETC.
5. CERTIFICATION MUST BE SIGNED AND SEALED BY LAND SURVEYOR REGISTERED IN THE STATE OF MONTANA.
6. FILL IN CROSS INDEX. AND SECTION DIAGRAM AT BOTTOM OF SHEET.

CERTIFIED CORNER RECORDATION

CORNER North Quarter, SEC. 29, T. 4S., R. 51E., P.M.M., POWDER RIVER COUNTY, MT

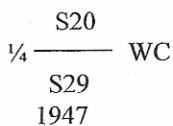
ORIGINAL RECORD: Surveyed by George L. Elmer and Theodore O. Johnson in 1908.

Set a sandstone 18x9x5 ins., 8 ins. in the ground, for the 1/4 sec. cor , marked 1/4 on N. face; and raise a mound of stone 2 ft base, 1 1/2 ft high N. of cor.

SUBSEQUENT RECORD: Dependent resurveyed by Randy L. Lyman in 1946.

40.07 Point for 1/4 cor. bet. secs. 20 and 29. at proportionate distance falls in field.

40.87 Set an iron post 3 ft long 1 ins diam. 30 ins. in the ground, with brass cap marked



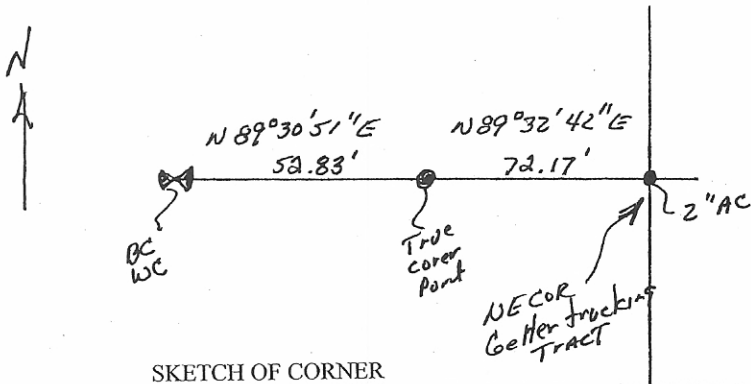
Raise a mound of stone , 2 ft base 1 1/2 ft high around the post N. of cor.

Certified Land Corner Recordation filed by Joe S. Dent 2357-S June 13, 1983.

EVIDENCE FOUND: Brass cap Witness corner on Iron pipe as per record. Nothing was found at the true corner point.

SET: Monument in good repair. Noting new set at corner location.

At the northeast corner of the Getter Trucking Tract, Book 33, page 193, set a #5x24" rebar with 2" aluminum cap marked 7155LS. Said point lies on the north line of Section 29, North 89°32'42" East, 72.17 feet from the true quarter corner point.



SKETCH OF CORNER

CERTIFICATION

I, _____, certify the information shown is true and correct

MONTANA

* JIMMIE L. BREWER *
* 7155 S *
* REGISTERED LAND SURVEYOR *

I, Jimmie L. Brewer of Ground Party Chief certify that this Corner Record correctly represents work performed by me or under my direction in compliance with the "Corner Recordation Act" (28-23-101, et seq., M.C.A.)

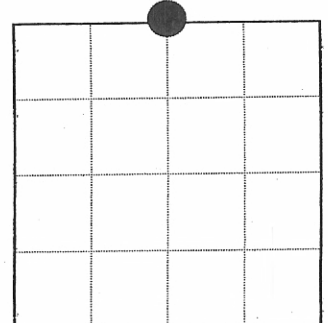
Signature of Surveyor & Seal

Date _____, Reg. No. 7155LS
Employer: HKM Engineering Inc.

Office of Clerk and Recorder, County of Powder River. This "corner record" was filed for record on 7-2-01 @ 9:56 AM. was noted on the cross-index plat and is assigned page No. 125609. book No. _____.

Carole B Richards, Dep
County Official

Sec. 29



● corner this sheet