

INSTRUCTIONS

1. Original and/or subsequent record used to evaluate the corner position.
2. Description of evidence found, note discrepancies in the record, state method of establishing lost or obliterated corners.
3. Description of monument and accessories set to perpetuate the corner position.
4. Sketch of corner, show all pertinent data which can best be shown in a sketch example, corner marking, topography ties, position of accessories, etc.
5. Certification must be signed and sealed by Land Surveyor registered in the State of Montana.
6. Fill in Cross Index & Section Diagram at bottom of sheet.

CERTIFIED CORNER RECORDATION

Corner 1/4 Cor. Sec. 29 & 28 T. 4 S. R. 51 E. Powder River County

1908 Record

We did not have a copy of the 1908 G.L.O. survey notes of the subdivisions of T4S, R51E by Geo. L. Elmer & Theodore O. Johnson.

1947 Record

1947 G.L.O. resurvey & remonumentation of T4S, R51E by Ranney Y. Lyman.

The 1/4 cor. of secs. 28 & 29, marked by a broken sandstone and distinct pits.

At the corner point

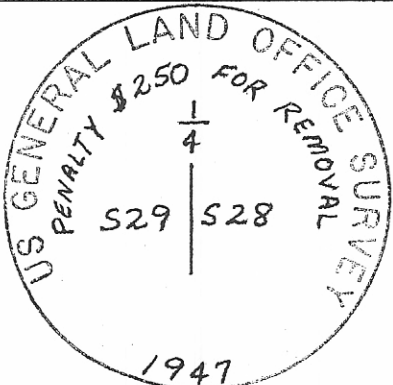
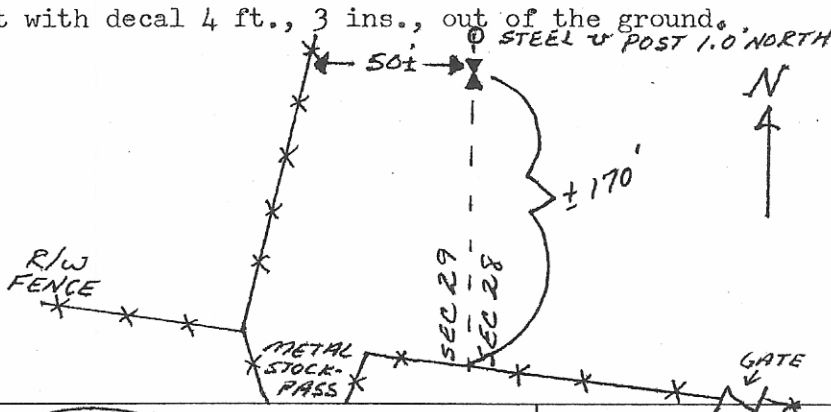
Set an iron post, 3 ft. long, 1 in. diam., 30 ins. in the ground, with brass cap marked
 and bury the old stone beside the iron post, and raise a mound of stone, 2 ft. base, 1 1/2 ft. high, W. of corner.

1992 Found

Found iron post with brass cap as described in the 1947 G.L.O. notes and marked as shown below. Found broken stone lying directly south of cap, no evidence of mound of stone.

1992 Set

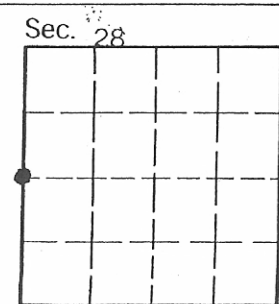
A Steel U post with decal 4 ft., 3 ins., out of the ground.



SKETCH OF CORNER

CERTIFICATION
 I, Douglas J. Martin
 certify the information shown herein is true and correct.
 Signature of Record Party
 Signature of Land Surveyor
 certify that this Corner Record correctly represents work performed by me or under my direction in compliance with the "Corner Recordation Act" (70-2101, as amended, M.C.L.A. #43-28-S)
 Date: 10/92 Reg. No. 10388
 Employer: MDT

Office of Clerk and Recorder, County of Powder River. This "corner record" was filed for record on November 2, 1992 @ 10:02 AM was noted on the cross-index plat and is assigned page No. 118577, in book No. _____



Indexed	X
Compared	✓

Cross Index No. T9 T. 4S R. 51E PMM

• - corner this sheet