

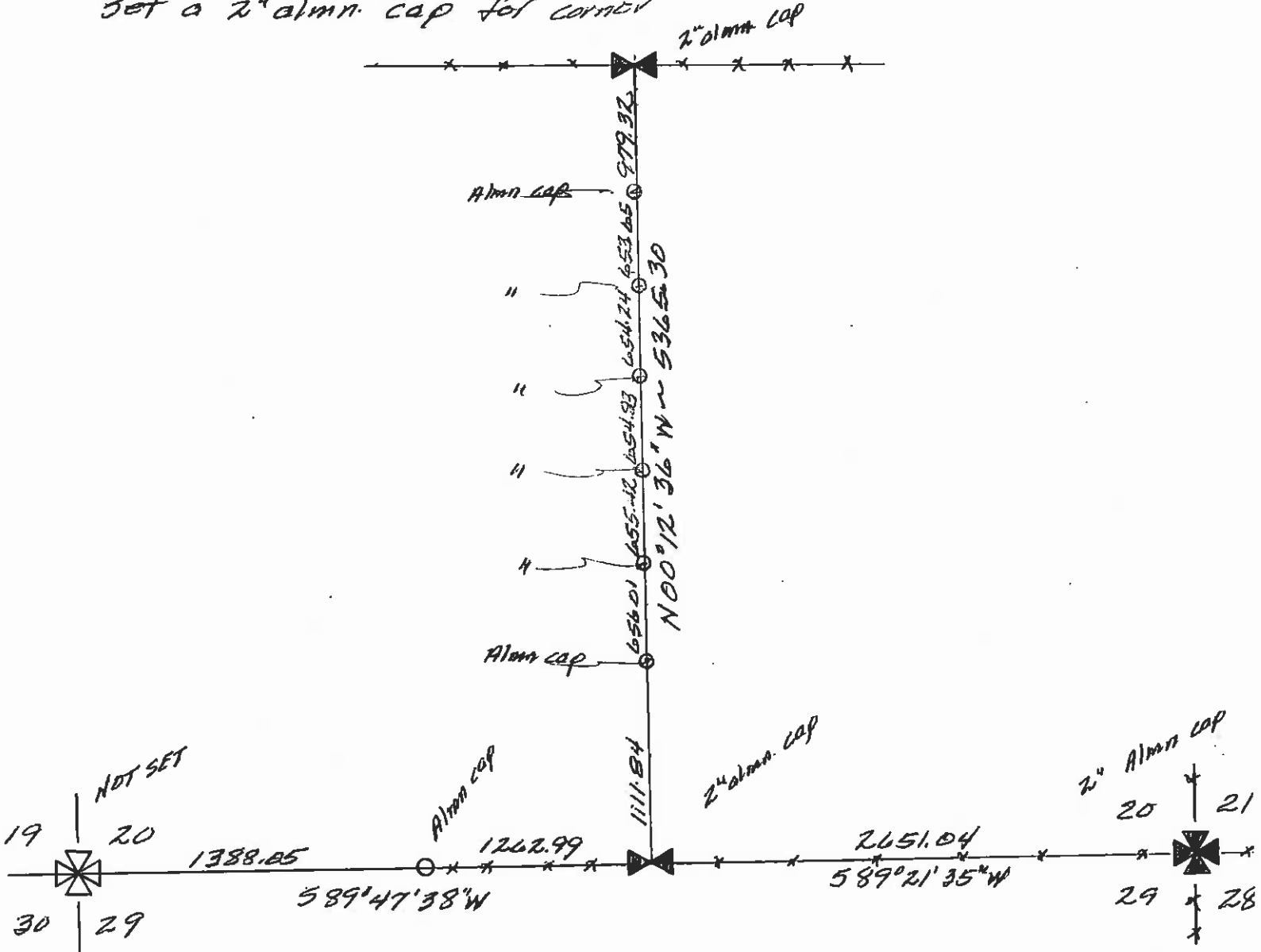
INSTRUCTIONS

1. Original and in subsequent record used to evaluate the corner position.
2. Description of evidence found, note discrepancies in the record, state method of establishing lost or obliterated corners.
3. Description of monument and accessories set to perpetuate the corner position.
4. Sketch of corner, show all pertinent data which can best be shown in a sketch example, corner marking, topography ties, position of accessories, etc.
5. Certification must be signed and sealed by Land Surveyor registered in the State of Montana.
6. Fill in Cross Index & Section Diagram at bottom of sheet.

CERTIFIED CORNER RECORDATION

Corner South 1/4 corner sec 20 T. 5N R. 9W P.M.M. Deer Lodge County

unable to find original charred post. used single proportion measure east-west and used east-west fence line and set a 2" almn. cap for corner



CERTIFICATION

I, _____ certify the information shown herein is true and correct

Signature Ground Party Chief

I, Matt J. Vranish certify that this Corner Record correctly represents work performed by me or under my direction in compliance with the "Corner Recordation Act" (70-22-101, et seq., M.C.A.)

Signature of Surveyor & Seal

Date: 5-8-86 Reg. No. 18265

Employer: self

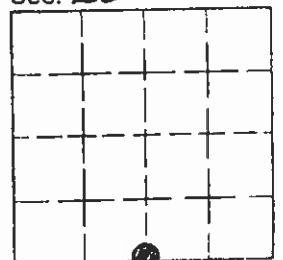
SKETCH OF CORNER

Office of Clerk and Recorder, County of Deer Lodge. This "corner record" was filed for record on May 12, 1986 1:44 PM

was noted on the cross-index plat and is assigned page No. 261, in book No. 2

Roggy Moody, Deputy
County Official

Sec. 20



• - corner this sheet

Cross Index No. R-7 T. 5N R. 9W P.M.M.