

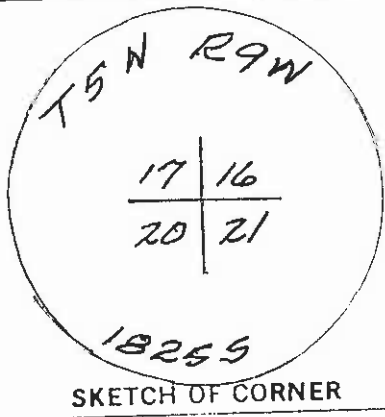
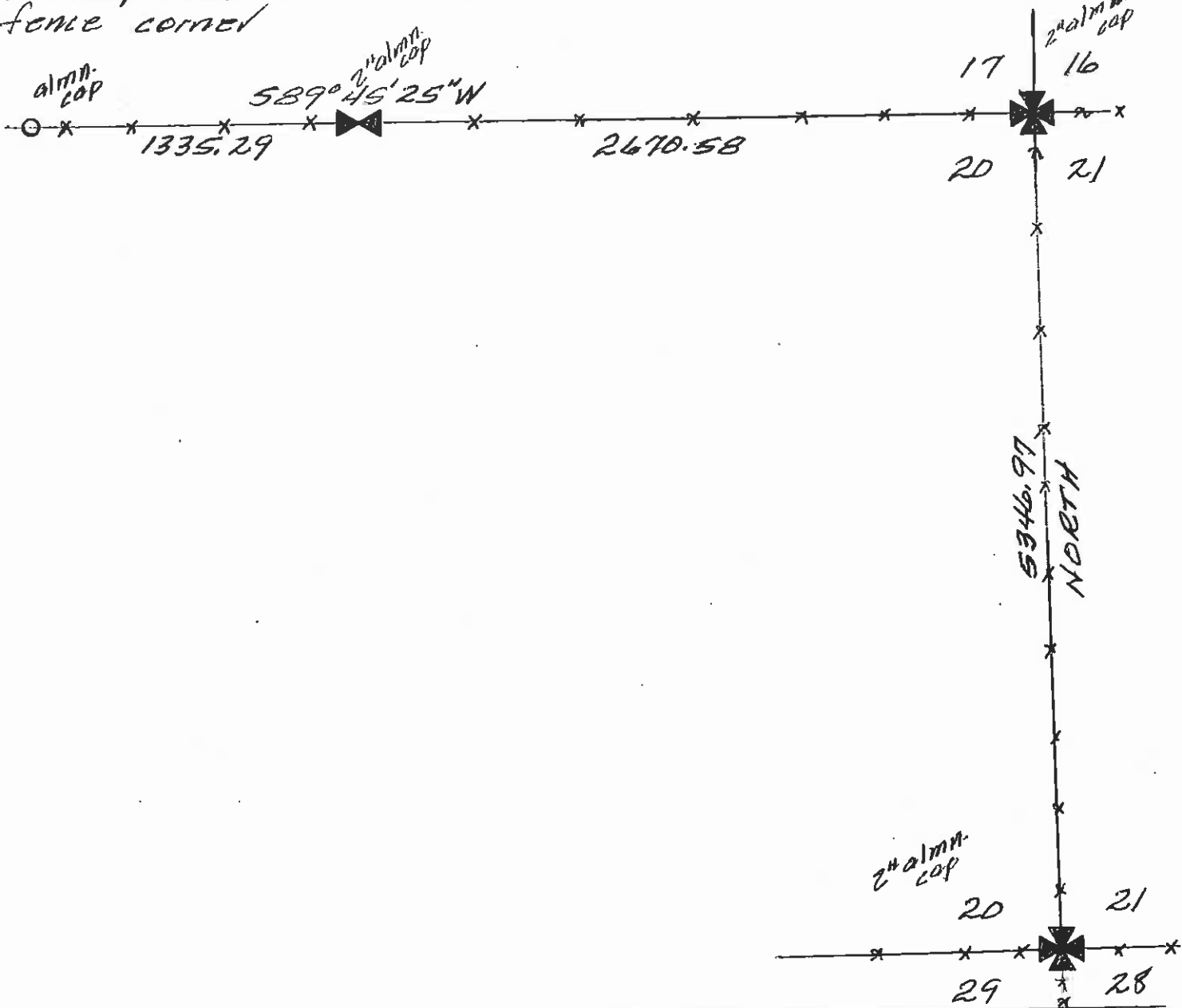
INSTRUCTIONS

1. Description of subsequent record used to evaluate the corner position.
2. Description of evidence found, note discrepancies in the record, state method of establishing lost or obliterated corners.
3. Description of monument and accessories set to perpetuate the corner position.
4. Sketch of corner, show all pertinent data which can best be shown in a sketch example, corner marking, topography lies, position of accessories, etc.
5. Certification must be signed and sealed by Land Surveyor registered in the State of Montana.
6. Fill in Cross Index & Section Diagram at bottom of sheet.

CERTIFIED CORNER RECORDATION

Corner N.E. corner sec. 20 T 5N R. 9W P.M.M. Deer Lodge County

Unable to find original corner post. Used corner of fences running east-west and north-south. Set a 2" almn. cap at fence corner



CERTIFICATION

I, _____ certify the information shown herein is true and correct

Signature Ground Party Chief
Matt J. Vranish

I, _____ certify that this Corner Record correctly represents work performed by me or under my direction in compliance with the "Corner Recordation Act" (10-22-101, et seq., M.C.A.)

Signature of Surveyor & Seal
Matt J. Vranish

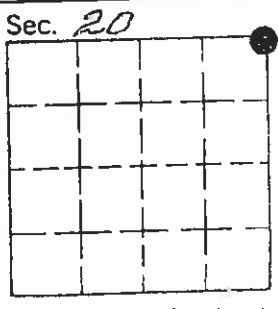
Date: 5-8-86 Reg. No. 18255

Employer: self

Office of Clerk and Recorder, County of Deer Lodge. This "corner record" was filed for record on May 12, 1986 at 1:48 PM

As noted on the cross-index plat and is assigned page No. 263, in book No. 2

Rogay Moody Deputy
County Official



Cross Index No. N-9 T. 5N R. 9W P.M.M.