

130844

INSTRUCTIONS

- 1. Original and/or subsequent record used to evaluate the corner position.
- 2. Description of evidence found, note discrepancies in the record, state method of establishing lost or obliterated corners.
- 3. Description of monument and accessories set to perpetuate the corner position.
- 4. Sketch of corner, show all pertinent data which can best be shown in a sketch example, corner marking, topography ties, position of accessories, etc.
- 5. Certification must be signed and sealed by Land Surveyor registered in the State of Montana.
- 6. Fill in Cross Index & Section Diagram at bottom of sheet.

CERTIFIED CORNER RECORDATION

Corner 1/4 30/29 T. 5N R. 10W P.M.M. Deer Lodge County

Record 1868 - Set 1/4 sec. cor., a post in mound of earth with pits, charred stake and as per instructions.

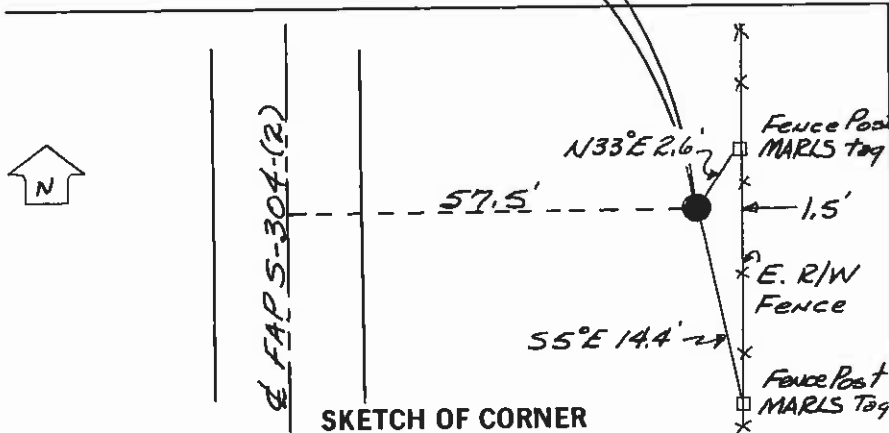
Record 1959 - Montana Department Right-of-Way Plans for FAP S-304(2) indicates by symbol a found monument at the 1/4 Corner position 57.5' Rt. of centerline station 105+73.8.

Found 1987 - At the record station and distance right of centerline, found a 1" diameter iron pin bent over. The iron pin was firmly set and when straightened out was 6" above ground.

I accept the found Iron pin as evidence of 1/4 located by persons unknown. At the corner position set a 3 1/2" x 30" Alum. monument over the found iron pin, marked as per diagram below, 24" in the ground from which:

- A metal fence post witness bears NE, 1' foot
- A fence post with MARLS Yellow Tag bears N 33°E, 2.6' feet
- A fence post with MARLS Yellow Tag bears S 5°E, 14.4' feet
- Corner is 1.5 feet west of east R/W Fence

See Corner 29, 30, 31 and 32 for Ties to other Corners.



CERTIFICATION

I, _____ certify the information shown herein is true and correct.

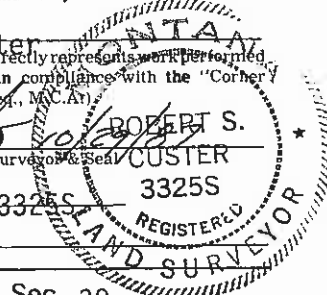
Signature Ground Party Chief _____

I, Robert S. Custer certify that this Corner Record correctly represents work performed by me or under my direction in compliance with the "Corner Recordation Act" 70-22-101, et seq., M.C.A.

Signature of Surveyor & Seal ROBERT S. CUSTER

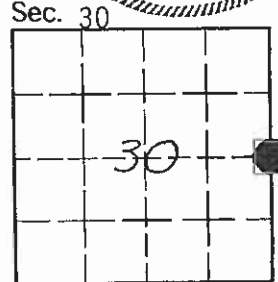
Date: 10/21/87 Reg. No. 3325S

Employer: MDOH



Office of Clerk and Recorder, County of Deer Lodge. This "corner record" was filed for record on November 6, 1987 1:18 pm was noted on the cross-index plat and is assigned page No. 271, in book No. 2

Linda Harris Deputy
County Official



Cross Index No. T-5 T. 5N R. 10W P.M.M.