

**CERTIFIED LAND CORNER RECORDATION**

DESCRIPTION OF CORNER EVIDENCE FOUND, AND ORIGINAL RECORD (IF KNOWN)

*Found: No evidence of corner in existing roadway.*

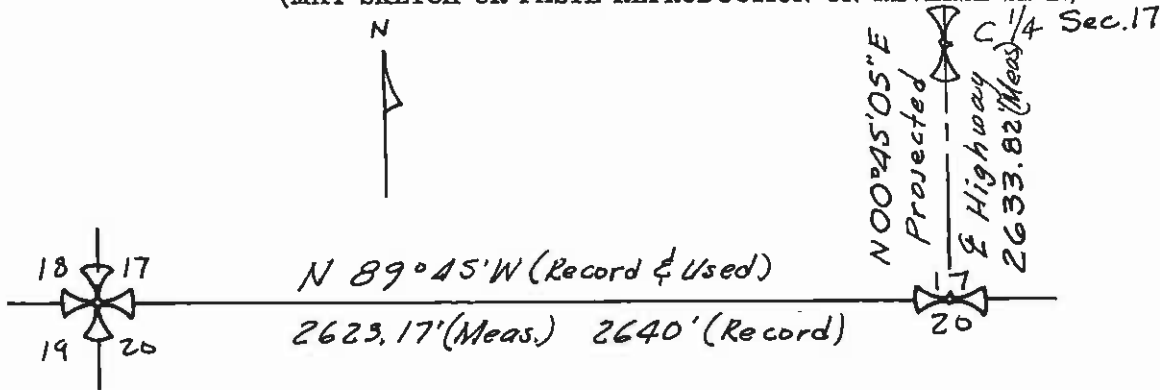
*Record: Set 1/4 sec. cor. a post in mound of earth with pits charred stake as per instructions.*

DESCRIPTION OF MONUMENT AND ACCESSORIES ESTABLISHED TO PERPETUATE THE ORIGINAL LOCATION OF THIS CORNER:

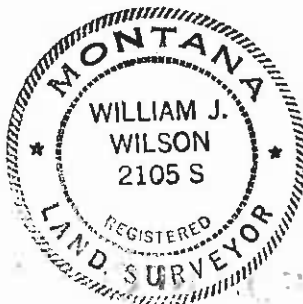
Date of work: *November 1974*

*Set 5/8" Iron pin and plastic cap at point determined from Montana Highway Department Right-of-Way plans to be 1/4 section corner and projected centerline of highway and N-S middle section line of Section 17.*

SKETCH, WITH COURSE AND DISTANCE TO ADJACENT CORNERS IF DETERMINED IN THIS SURVEY. (MAY SKETCH OR PASTE REPRODUCTION ON REVERSE SIDE.)



Surveyor's Seal



I, \_\_\_\_\_  
certify that the information shown herein is true and correct.

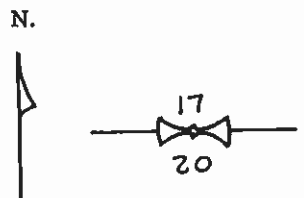
Signature of Ground Party Chief

I, *Wm John Wilson*  
certify that I have carefully performed or reviewed the work done on the diagrammed corner as reported on this recordation form and approve the same.

*Wm John Wilson*  
Signature of Surveyor

*2105-S*  
Registration Number

DIAGRAM OF CORNER:



*T5N, R10W, M.P.M.*  
= Corner recorded on the sheet

Office of Clerk and Recorder, County of *Deer Lodge*

This "corner record" was filed for record on the *11* day of *July*, 19*78*, was noted on the cross-index plat and is assigned page No. *204*, in book No. *1*.

*Polly Blume Deputy*  
County Official