

133488

INSTRUCTIONS

- 1. Description of evidence found, note discrepancies in the record, state method of establishing lost or obliterated corners.
- 2. Description of monument and accessories set to perpetuate the corner position.
- 3. Description of monument and accessories set to perpetuate the corner position.
- 4. Sketch of corner, show all pertinent data which can best be shown in a sketch example, corner marking, topography ties, position of accessories, etc.
- 5. Certification must be signed and sealed by Land Surveyor registered in the State of Montana.
- 6. Fill in Cross Index & Section Diagram at bottom of sheet.

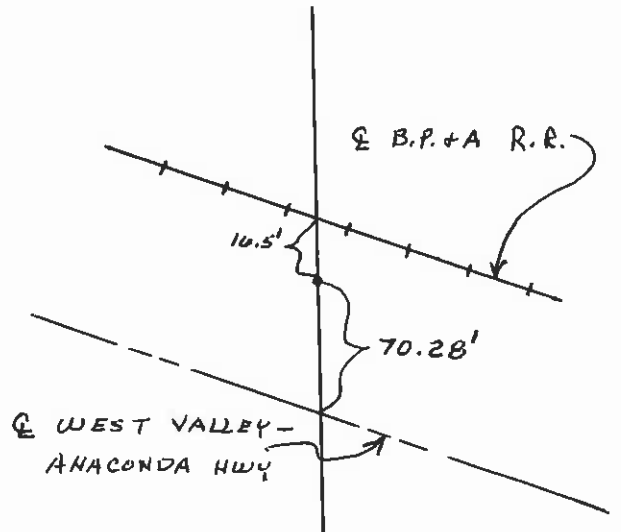
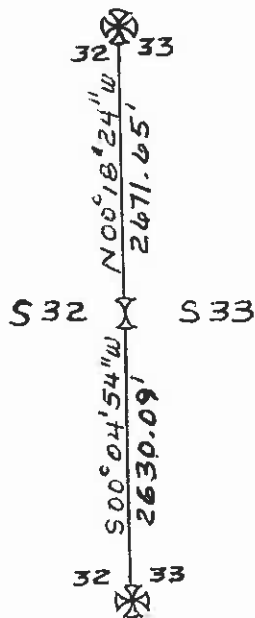
CERTIFIED CORNER RECORDATION

Corner 1/4 to Secs 32 & 33 T. 5N R. 11W P.M.M. Deer Lodge County

- 1. Original Record (1876) - Set granite stone 14"x10"x5" - 9" in the ground. Marked 1/4 on North face. Dug pits 18" square x 12" deep N, S, E & W 5.5' distance from corner.

Subsequent Record - Certificate of Survey 182A shows finding iron pin. Other Certificate of Surveys make calls to the corner but make no mention of what was found.

- 2. No evidence found of original or subsequent monuments. Re-established position from monuments found at the SW Cor. Tract A and the SE Cor. of Tract C of Certificate of Survey No. 41A. Used record ties to section line from C/S No. 41A and a tie from the centerline of the BA & P Railroad as called out in the deed granting ownership to BA&P Railroad (in book 30, page 315 Deer Lodge County Records). Deed shows a tie of 16.5' N. from centerline of tracts.
- 3. Set a 2" alum. pipe with a 3" alum. cap at the corner position. Set steel fence post with monument decal next to corner.

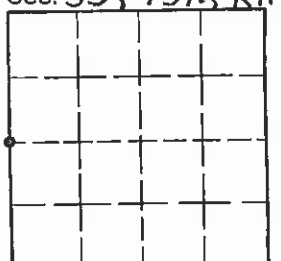


SKETCH OF CORNER

133488

Office of Clerk and Recorder, County of Deer Lodge. This "corner record" was filed for record on 12th January 1989 was noted on the cross-index plat and is assigned page No. 272, in book No. 2 Cheryl D. Beatty County Official @ 2:50pm.

Sec. 33, T5N, R11W



• - corner this sheet

Cross Index No. X-9 T. 5N R. 11W P.M.M.

CERTIFICATION

I, \_\_\_\_\_ certify the information shown herein is true and correct.

Signature Ground Engineer/Chlor  
**Dennis L. Foreman**  
 I, \_\_\_\_\_ certify that this Corner Record correctly represents work performed by me or under my direction in accordance with the "Corner Recordation Act" (70-22-101, et seq., M.C.A.)

Dennis L. Foreman  
 Signature of Surveyor Registered in Montana  
 Reg. No. 5606S  
 Employer: S/S/G Engineering, Inc.