

INSTRUCTIONS

1. Original and/or subsequent record used to evaluate the corner position.
2. Description of evidence found, note discrepancies in the record, state method of establishing lost or obliterated corners.
3. Description of monument and accessories set to perpetuate the corner position.
4. Sketch of corner, show all pertinent data which can best be shown in a sketch example, corner marking, topography ties, position of accessories, etc.
5. Certification must be signed and sealed by Land Surveyor registered in the State of Montana.
6. Fill in Cross Index & Section Diagram at bottom of sheet.

CERTIFIED CORNER RECORDATION

Standard Corner Sections 34 & 35 T. 5 N. R. 11 W. P.M.M. Deer Lodge County

ORIGINAL RECORD: (1873 G.L.O.)
Set a Sandstone 16 x 11 x 7 in., 12 in. in the ground for Standard corner to sections 34 & 35, marked SC. with two notches on the East and four notches on the West edges and raised a monument of stone on N. side.

SUBSEQUENT RECORD: (1994 Corner Record by Ronald Milam)
Found original stone with distance call to Standard corner 35 & 36.

EVIDENCE FOUND: Found 3 1/4" Aluminum Cap, 0.85' above ground in mound of stone, from which:
A fence corner bears N40°W, 4.4 feet dist.

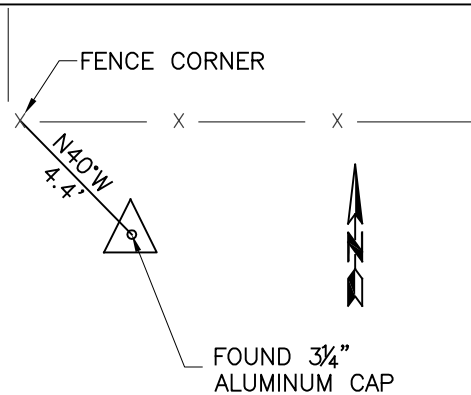
The distances between the 1994 corner record and ties on this survey are within 2 feet of each other.

PERPETUATION: Placed MARLS tag on fence corner post.

Date of Survey: October, 2009.



NAD 83 coordinates for this corner:
Latitude = 46°08'09.86261"N Longitude = 112°57'12.78457"W
NOTE: These coordinates are to be used as a search tool only.



(Not to Scale)
SKETCH OF CORNER

CERTIFICATION

I, Steve Cummings
certify the information shown herein is true and correct.

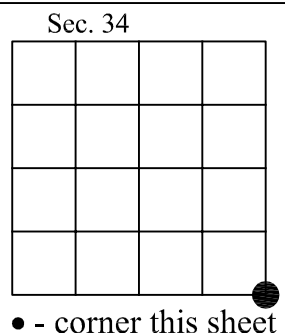
Signature Ground Party Chief

I, Kurt A. Luebke
certify that this Corner Record correctly represents work performed by me or under my direction in compliance with the "Corner Recordation Act" (70-22-101, et seq., M.C.A.)

Signature of Surveyor & Seal

Date: 10-27-2009 Reg. No. 13237 S

Employer: DJ&A P. C.



Cross Index No. Z-17 T. 5 N. R. 11 W. PMM