

**INSTRUCTIONS**

1. Original and/or subsequent record used to evaluate the corner position.
2. Description of evidence found, note discrepancies in the record, state method of establishing lost or obliterated corners.
3. Description of monument and accessories set to perpetuate the corner position.
4. Sketch of corner, show all pertinent data which can best be shown in a sketch example, corner marking, topography lies, position of accessories, etc.
5. Certification must be signed and sealed by Land Surveyor registered in the State of Montana.
6. Fill in Cross Index & Section Diagram at bottom of sheet.

**CERTIFIED CORNER RECORDATION**

Corner SEC. COR. 35 & 36 T. 5 N R. 11 W P.M.M. DEER LODGE County

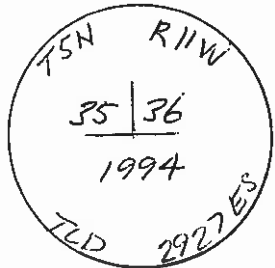
ORIGINAL RECORD - GLO 1873

Set a limestone 24x11x5 in., 18 inches in the ground for standard corner to sections 35 and 36 marked S.C. with one notch on the east and four notches on the W edges.

EVIDENCE FOUND:           None

PERPETUATION:           Set 5/8" rebar with 2 1/2" aluminum cap (marked as per sketch) at proportionate distance between corners on the township line.

Refer to C.O.S. #95-C.

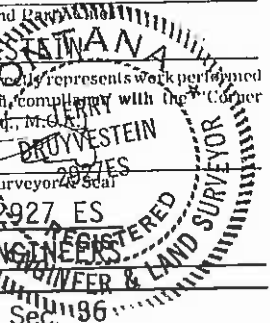


SKETCH OF CORNER

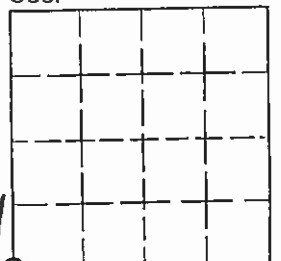
**CERTIFICATION**

I, \_\_\_\_\_  
certify the information shown herein is true and correct.

Signature Ground Party: \_\_\_\_\_  
 I, TERRY L. DRUYVESTEIN  
 certify that this Corner Recordation represents work performed by me or under my direction in compliance with the "Corner Recordation Act" (70-22-101 et seq., M.C.A.)  
 Signature of Surveyor: Terry L. Druyvestein  
 Date: 6/94 Reg. No. 2927 ES  
 Employer: D J & A ENGINEERS



Office of Clerk and Recorder, County of Deer Lodge. This "corner record" was filed for record on August 1, 1994 was noted on the cross-index plat and is assigned page No. 356, in book No. 2 \_\_\_\_\_  
Melvin Anderson Deputy  
 County Official



Cross Index No. Z - 21 T. 5 N R. 11 W PMM

• - corner this sheet