

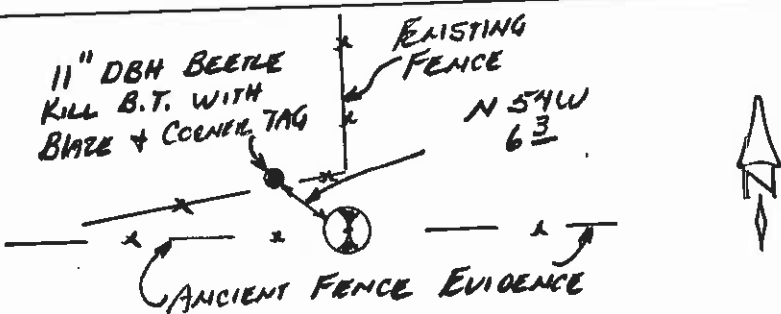
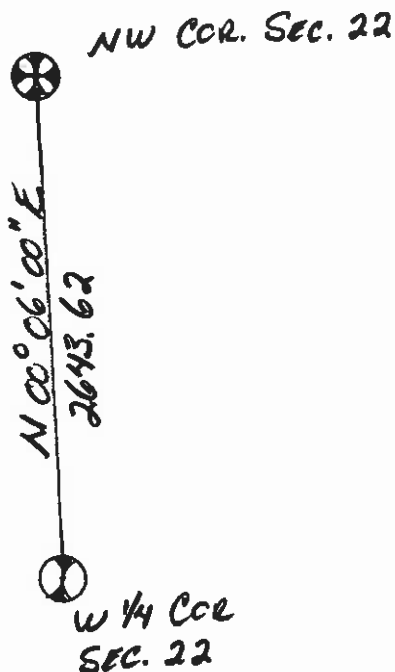
**INSTRUCTIONS**

2. Find or subsequent record used to evaluate the corner position.
3. Description of monument and accessories set to perpetuate the corner position.
4. Sketch of corner, show all pertinent data which can best be shown in a sketch example, corner marking, topography (ties, position of accessories, etc.
5. Certification must be signed and sealed by Land Surveyor registered in the State of Montana.
6. Fill in Cross Index & Section Diagram at bottom of sheet.

**CERTIFIED CORNER RECORDATION**

Corner WEST 1/4 COR. SEC. 22 T. 5N R. 12W P.M.M. ANACONDA-DEER LODGE County

- 1) SEE G.L.O. RECORD
- 2) FOUND A 2 3/4" PIPE WITH 3 1/4" B.L.M. BRASS CAP, WITH TOP OF CAP 12" ABOVE GROUND
- 3) ACCEPTED THE FOUND MONUMENT AS THE WEST 1/4 COR. SEC. 22, ESTABLISHED TIES AS SHOWN IN SKETCH BELOW.



CERTIFIED MONTANA

I, KERREL BELL certify the information shown herein as true and correct.

Signature (County Party) 9515 LS

I, KERREL BELL certify that this Corner Record complies with the requirements of the Montana Corner Recordation Act (70-22-101, et seq.).

Signature of Surveyor & Seal [Signature]

Date: 4/22/90 Reg. No. 9515 LS

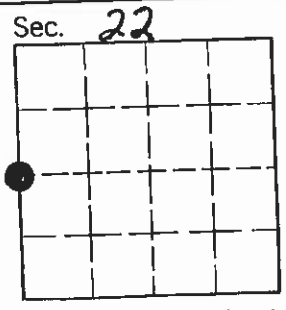
Employer: BELL SURVEYING

SKETCH OF CORNER

Office of Clerk and Recorder, County of Deer Lodge. This "corner record" was filed for record on 23 APRIL 1990 was noted on the cross-index plat and is assigned page No. 284, in book No. 2

Cheryl Beatty  
County Official

P-13  
Cross Index No. W 1/4 S 22 T. 5N R. 12 P.M.M.



• - corner this sheet