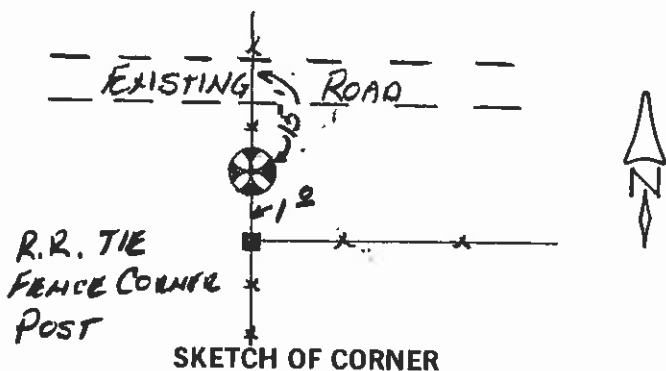
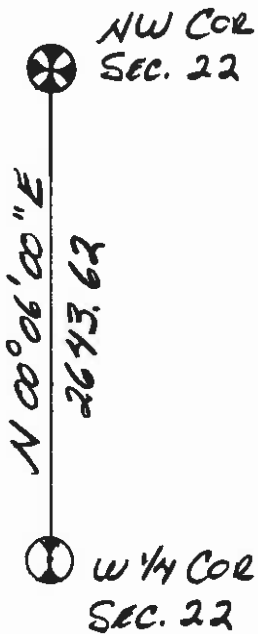


- INSTRUCTIONS**
1. and/or subsequent record used to evaluate the corner position.
 2. In case of evidence found, note discrepancies in the record, state method of establishing lost corners.
 3. Description of monument and accessories set to perpetuate the corner position.
 4. Sketch of corner, show all pertinent data which can best be shown in a sketch example, corner marking, topography ties, position of accessories, etc.
 5. Certification must be signed and sealed by Land Surveyor registered in the State of Montana.
 6. Fill in Cross Index & Section Diagram at bottom of sheet.

CERTIFIED CORNER RECORDATION

Corner N.W. COR. SEC. 22 T. 5N R. 12W P.M.M. AMACONOA-DEER LODGE County

- 1) SEE G.L.O. RECORD
- 2) FOUND 2 3/4" PIPE WITH 3 1/4" BRASS CAP BY B.L.M. WITH A CARBONITE POST ON WEST SIDE OF MONUMENT.
- 3) ACCEPTED THE FOUND MONUMENT AS THE N.W. COR. SEC. 22 ESTABLISHED TIES AS SHOWN IN THE SKETCH BELOW.



CERTIFICATION OF **MONTANA**

I, KERREL BELL 9515 LS
 Signature Ground Party Client

I, Kerrel Bell
 Signature of Surveyor & Seal

Date: 4/22/90 Reg. No. 9515LS
 Employer: BELL SURVEYING

Office of Clerk and Recorder, County of Deer Lodge. This "corner record" was filed for record on 23 APRIL was noted on the cross-index plat and is assigned page No. 285, in book No. 2

Cheryl J. Beatty
 County Official

N-13
 Cross Index No. 1111 SEC. 22 T. 5N R. 12W P.M.M.

