

CERTIFIED LAND CORNER RECORDED

DESCRIPTION OF CORNER EVIDENCE FOUND, AND ORIGINAL RECORD (IF KNOWN)

W 1/4 CORNER SECTION 23, T5N., R12W

RECORD - 1954

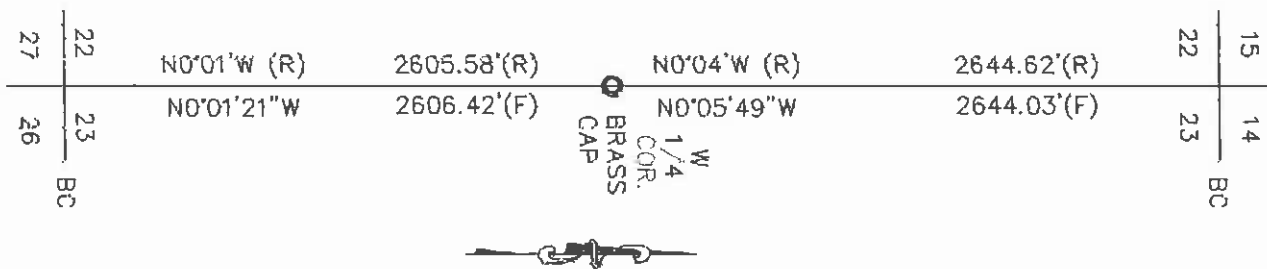
SET A 2-1/4" DIAMETER IRON PIPE 24" IN THE GROUND WITH A BRASS CAP IN MOUND OF STONE BURIED ORIGINAL STONE ALONGSIDE.

FOUND BRASS CAP AS RECORDED

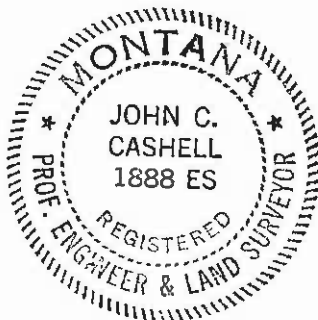
DESCRIPTION OF MONUMENT AND ACCESSORIES ESTABLISHED TO PERPETUATE THE ORIGINAL LOCATION OF THIS CORNER:

Date of work: SEPT. 9, 19

SKETCH WITH COURSE AND DISTANCE TO ADJACENT CORNERS IF DETERMINED IN THIS SURVEY. (MAY SKETCH OR PASTE REPRODUCTION ON REVERSE SIDE)



Surveyor's Seal



CORY PATTERSON

I certify that the information shown herein is true and correct.

Cory Patterson
Signature of Ground Party Chief

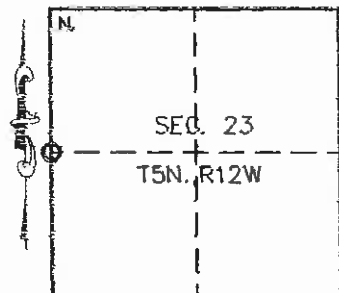
JOHN C. CASHELL

I certify that I have carefully performed or reviewed the work done on the diagrammed corner as reported on this recordation form and approve the same.

John C. Cashell
Signature of Surveyor

1888ES
Registration Number

DIAGRAM OF CORNER:



○ = Corner recorded on the sketch

Office of Clerk and Recorder, County of DEER LODGE

This 'corner record' was filed for record on the 3RD day of APRIL, 1997, was noted on the cross-index plat and

assigned page No. 432 in book No. 2

Barbara J. Vaughn / D.E.P.W.
County Official

Cross Index No. P-17 T. 5N R. 12W Mer.