

INSTRUCTIONS

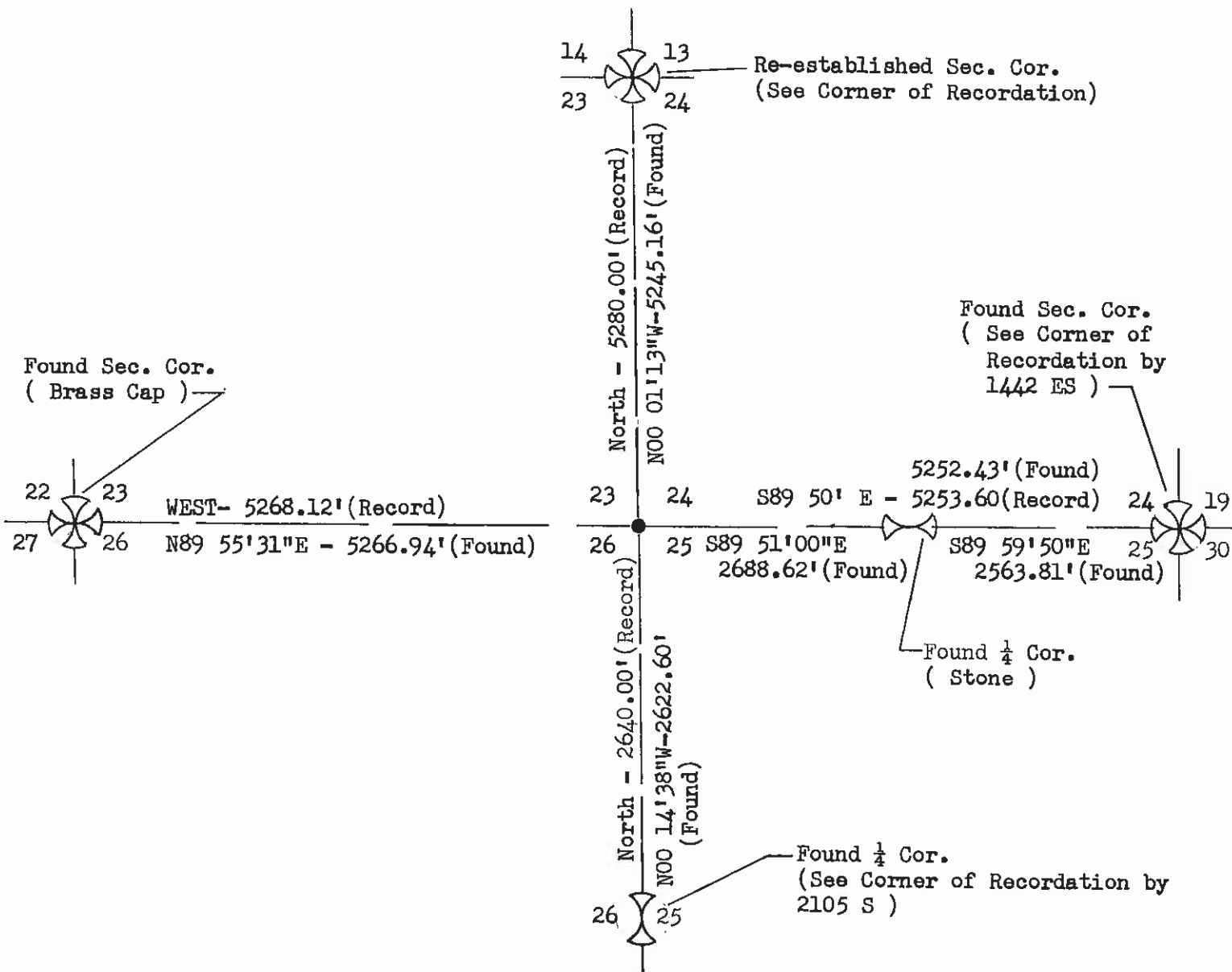
1. Description of evidence found, note discrepancies in the record, state method of establishing lost or obliterated corners.
2. Description of monument and accessories set to perpetuate the corner position.
3. Sketch or corner, show all pertinent data which can best be shown in a sketch example, corner marking, topography lines, position of accessories, etc.
4. Certification must be signed and sealed by Registered Land Surveyor in State of Montana.
5. Fill in Cross Index & Section Diagram at bottom of sheet.

CERTIFIED CORNER RECORDATION

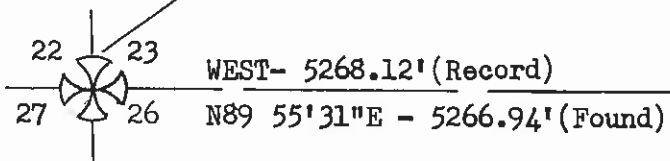
Corner Northeast corner of Section 26 T. 5N R. 12W P.M.M. Deer Lodge County

RECORD: Set a slate stone 22x12x8 ins., 16 ins. in the ground, for cor. to Sec's. 23, 24, 25 and 26, marked with 2 notches on S and 1 notch on E edges, dug pits 24x24x12 ins. in the each sec., 5½ ft. dist. and raised a mound of earth 2½ ft. high, 5 ft. base alongside.

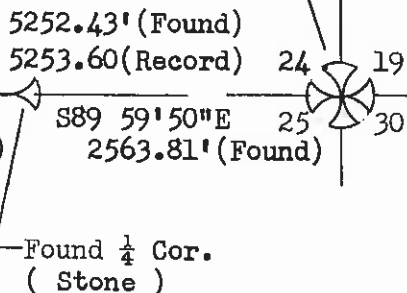
FOUND: Corner lost— Re-established by double proportionate method, using section corners from east, west and north and the ¼ corner to the south.



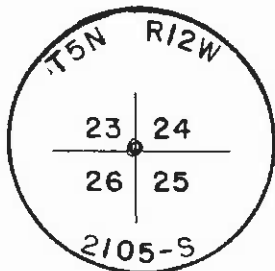
Found Sec. Cor.
(Brass Cap)



Found Sec. Cor.
(See Corner of Recordation by 1442 ES)



Found ¼ Cor.
(See Corner of Recordation by 2105 S)



5/8" Iron Pin
With Alum. Cap

SKETCH OF CORNER

CERTIFICATION

I, Bruce A. Wade
certify the information shown herein is true and correct.

Bruce A. Wade
Signature of Grantee Party Chief

I, William John Wilson
certify that this Corner Record correctly represents work performed by me or under my direction in compliance with the "Corner Recordation Act" of 1921, except as noted.

W. J. Wilson
Signature of Surveyor & Seal

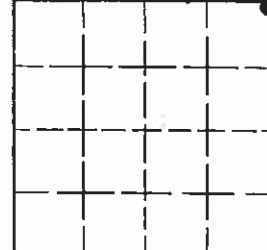
Date: 11/30/82 Reg. No. 21250

Employer: _____

Office of Clerk and Recorder, County of Deer Lodge. This "corner record" was filed for record on the December 2 day of 19 82 was noted on the cross-index plat and is assigned page No. 245, in book No. 1
120526

Cross Index No. R-21 T. 5N R. 12W PMM

Sec. 26, T5N, R12W, PMM



• - corner this sheet