

CERTIFIED LAND CORNER RECORDATION
(REFERENCE: FSM 7153.53)

DESCRIPTION OF CORNER EVIDENCE FOUND, AND ORIGINAL RECORD (IF KNOWN)

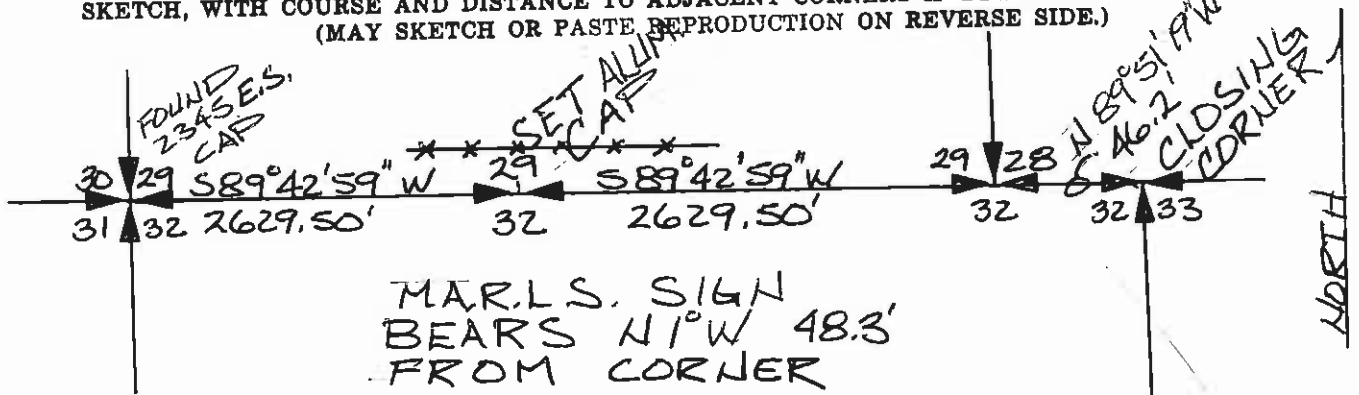
NO ORIGINAL EVIDENCE FOUND
SEARCHED FOR PINE POST, AND
MARKED STONE, MOUND OF EARTH

DESCRIPTION OF MONUMENT AND ACCESSORIES ESTABLISHED
TO PERPETUATE THE ORIGINAL LOCATION OF THIS CORNER:

Date of work: 6/13/97

SET 5/8 REBAR W/ ALUMINUM
CAP AS SHOWN BELOW, PUT
MAR.L.S. SIGN ON FENCE POST.
REESTABLISHED USING SINGLE PROPORTION.

SKETCH, WITH COURSE AND DISTANCE TO ADJACENT CORNERS IF DETERMINED IN THIS SURVEY.
(MAY SKETCH OR PASTE REPRODUCTION ON REVERSE SIDE.)



~~REF. MANDR SUB. NO.~~

DIAGRAM OF CORNER:

Surveyor's Seal

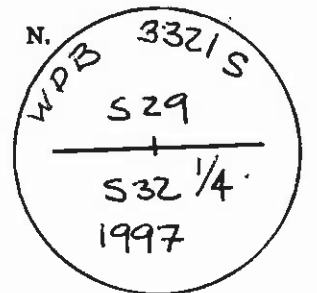


I, HANS BOHRNSEN
certify that the information shown herein is true and correct.

Hans Bohrsen
Signature of Ground Party Chief

I, _____
certify that I have carefully performed or reviewed the work done on the diagrammed corner as reported on this recordation form and approve the same.

William D. Bayer
Signature of Surveyor



= Corner recorded on the sheet

3321 S
Registration Number

Office of Clerk and Recorder, County of Granite
This "corner record" was filed for record on the 7th day of March, 2002, at 10:01 AM,
was noted on the cross-index plat and assigned page No. _____, in book No. _____, by Blanche Pederson,
County Official

Cross Index No. V-7 T. 5N R. 14W Me.

44040

SECTION 32