

CERTIFIED LAND CORNER RECORDATION
(REFERENCE FSM 7153.53)

DESCRIPTION OF CORNER EVIDENCE FOUND, AND ORIGINAL RECORD (IF KNOWN)

~~NO ORIGINAL EVIDENCE FOUND.~~
~~(ORIGINAL STONE W/ 4 BEARING~~
~~TREES. SEE ORIGINAL FIELD NOTES).~~

DESCRIPTION OF MONUMENT AND ACCESSORIES ESTABLISHED
TO PERPETUATE THE ORIGINAL LOCATION OF THIS CORNER:

Date of work: 7/96

~~SET 5/8" REBAR W/ ALUMINUM~~
~~CAP AS MARKED BELOW. TOOK 2~~
~~BEARING TREES: 8" FIR BEARS N85°W,~~
~~26.1'; 6" FIR BEARS S37°E, 32.4'~~

SKETCH, WITH COURSE AND DISTANCE TO ADJACENT CORNERS IF DETERMINED IN THIS SURVEY.
(MAY SKETCH OR PASTE REPRODUCTION ON REVERSE SIDE.)

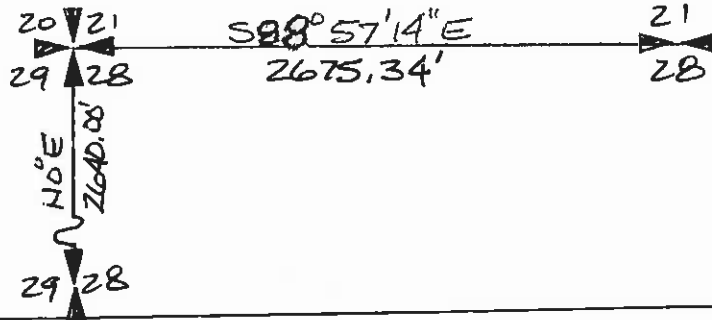
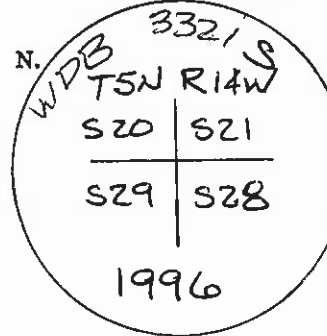


DIAGRAM OF CORNER:



Surveyor's Seal



I, HANS BOHRNSEN
certify that the information shown herein is true and
correct.

Hans Bohrsen
Signature of Ground Party Chief

I, _____
certify that I have carefully performed or reviewed the
work done on the diagrammed corner as reported on this
recordation form and approve the same.

William P. Bayer
Signature of Surveyor

= Corner recorded on the sheet

3321 S
Registration Number

Office of Clerk and Recorder, County of Granite

This "corner record" was filed for record on the 23rd day of June, 1997, was noted on the cross-index plat and

assigned page No. _____, in book No. 35342 _____
County Official W. Bayer

Cross Index No. R-9 T. 5N R. 14W Mo

S20, 21, 29, 28