

INSTRUCTIONS

1. Original or subsequent record used to evaluate the corner position.
2. Description of evidence found, note discrepancies in the record, state method of establishing lost or obliterated corners.
3. Description of monument and accessories set to perpetuate the corner position.
4. Sketch of corner, show all pertinent data which can best be shown in a sketch example, corner marking, topography ties, position of accessories, etc.
5. Certification must be signed and sealed by Land Surveyor registered in the State of Montana.
6. Fill in Cross Index & Section Diagram at bottom of sheet.

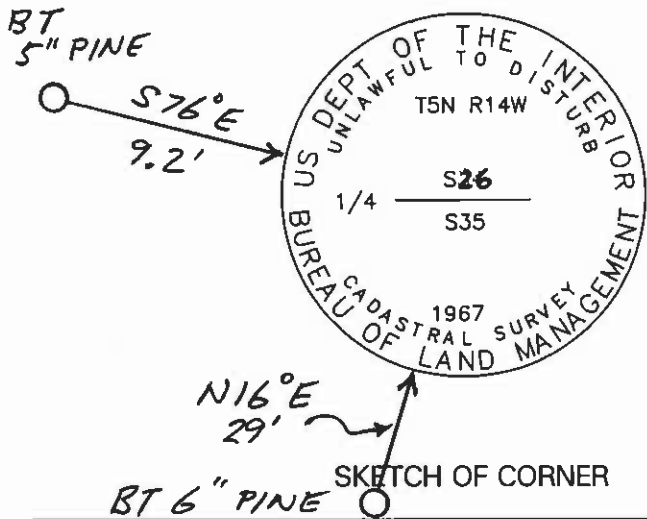
**CERTIFIED CORNER RECORDATION**

Corner 1/4 Corner 26-35 T. 5 N R. 14 W P.M.M. Granite County

RECORD: (1967 B.L.M.) Set an iron post, 30 ins. long, 2½ ins. diam., 24 ins. in the ground, with brass cap, marked as shown in the sketch.

EVIDENCE FOUND: Found corner as described.

PERPETUATION: See COS 403 on file with Granite County.



CERTIFICATION

I, \_\_\_\_\_  
 certify the information shown herein is true and correct.

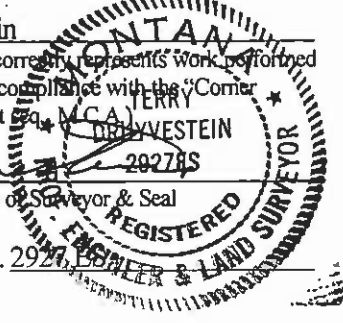
\_\_\_\_\_  
 Signature Ground Party Chief

I, Terry Druyvestein  
 certify that this Corner Record correctly represents work performed  
 by me or under my direction in compliance with the "Corner  
 Recordation Act" (70-22-10), et seq. M.C.A. TERRY  
 DRUYVESTEIN  
202785

\_\_\_\_\_  
 Signature of Surveyor & Seal

Date: 12/92 Reg. No. 2927

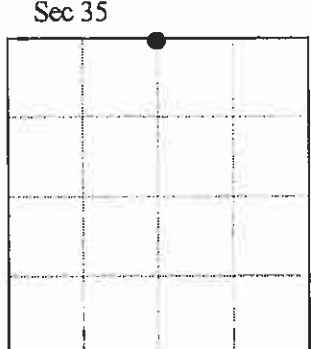
Employer: \_\_\_\_\_



Office of Clerk and Recorder, County of Granite. This "corner  
 record" was filed for record on Dec 28, 2000 @ 8:02 AM  
 was noted on the cross index plat and is assigned page No. \_\_\_\_\_, in  
 book No. \_\_\_\_\_

Blanche Pederson  
 County Official

Cross Index No. V-19 T. 5N R. 14W PMM



•- corner this sheet