

INSTRUCTIONS

1. Original and/or subsequent record used to evaluate the corner position.
2. Description of evidence found, note discrepancies in the record, state method of establishing lost or obliterated corners.
3. Description of monument and accessories set to perpetuate the corner position.
4. Sketch of corner, show all pertinent data which can best be shown in a sketch example, corner marking, topography ties, position of accessories, etc.
5. Certification must be signed and sealed by Land Surveyor registered in the State of Montana.
6. Fill in Cross Index & Section Diagram at bottom of sheet.

CERTIFIED CORNER RECORDATION

Corner 1/4 Sections 7 & 18 T. 5 S. R. 51 E. P.M.M. Powder River County

ORIGINAL RECORD: (1885 G.L.O.) Survey by George Scheetz.

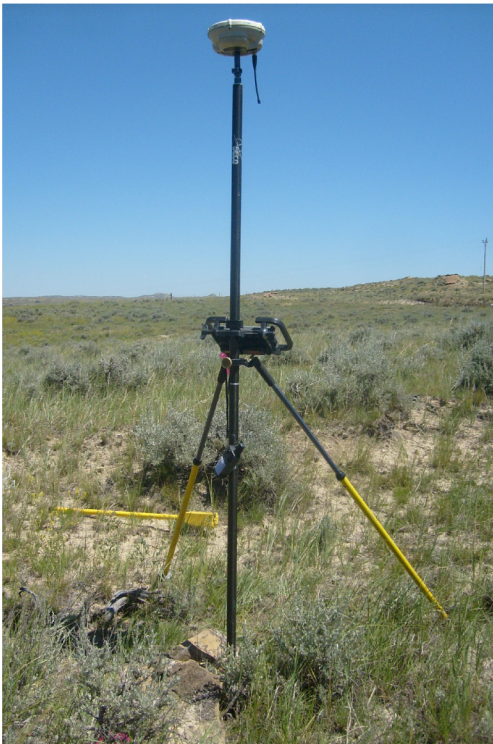
SUBSEQUENT RECORD: (1939 G.L.O.) The 1/4 sec. cor.: a sandstone, 16x12x3 ins., marked and witnessed as described in the official record, In place of the stone, set an iron post, 3 ft. long, 1 ins. diam., 28 ins. in the ground, for 1/4 cor. with the stone, set flush with the surface, on the N. side of the post, with brass cap marked as shown and raise a mound of stone, 2 ft. base, 1 1/2 ft. high, N. of cor.

SUBSEQUENT RECORD: None found

EVIDENCE FOUND: Found 2 1/2" Brass cap, 0.15' below ground surface, nothing around, piled rocks around. Corner falls in open native field.

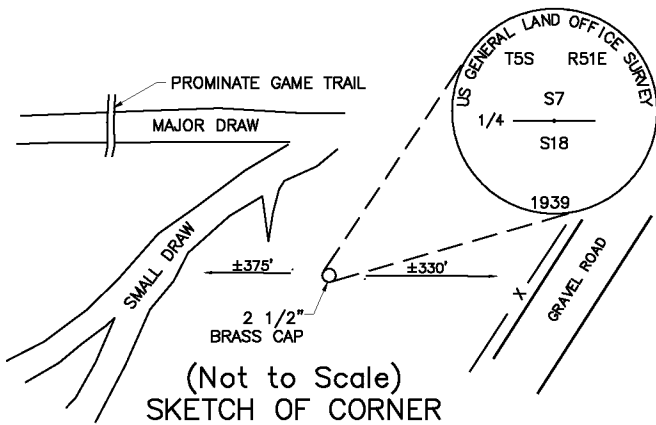
PERPETUATION: Established a latitude and longitude for search purposes.

Date of Survey: July, 2008.



VIEW LOOKING EAST

NAD 83 coordinates for this corner:
 Latitude = 45°24'22.85115"N Longitude = 105°28'26.36027"W
 NOTE: These coordinates are to be used as a search tool only.



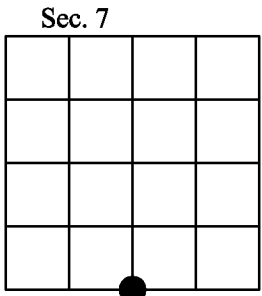
CERTIFICATION
 I, Steve Cummings
 certify the information shown herein is true and correct.

 Signature Ground Party Chief
 I, Kurt A. Luebke
 certify that this Corner Record correctly represents work performed by me or under my direction in compliance with the "Corner Recordation Act" (70-22-101, et seq., M.C.A.)

 Signature of Surveyor & Seal
 Date: 7-29-2008 Reg. No. 13237 S
 Employer: DJ&A P. C.

Office of Clerk and Recorder, County of Powder River. This "corner record" was filed for record on _____ was noted on the cross index plat and is assigned page No. _____, in book No. _____

County Official



• - corner this sheet

Cross Index No. J-3 T. 5 S. R. 51 E. PMM

F:\15490\dwg\Corner Recordations.dwg, J-3-T5S-R51E, 7/28/2008 1:39:39 PM, markd