

INSTRUCTIONS

1. If and/or subsequent record used to evaluate the corner position.
2. Description of evidence found, note discrepancies in the record, state method of establishing lost corners.
3. Description of monument and accessories set to perpetuate the corner position.
4. Sketch or corner, show all pertinent data which can best be shown in a sketch example, corner marking, topography (if applicable), position of accessories, etc.
5. Certification must be signed and sealed by Registered Land Surveyor in State of Montana.
6. Fill in Cross Index & Section Diagram at bottom of sheet.

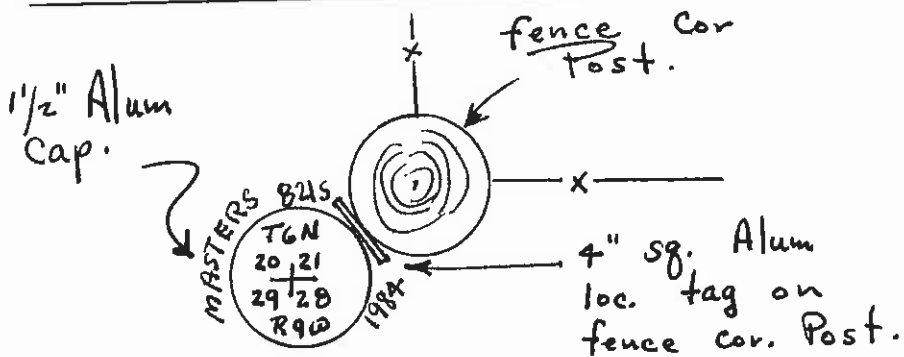
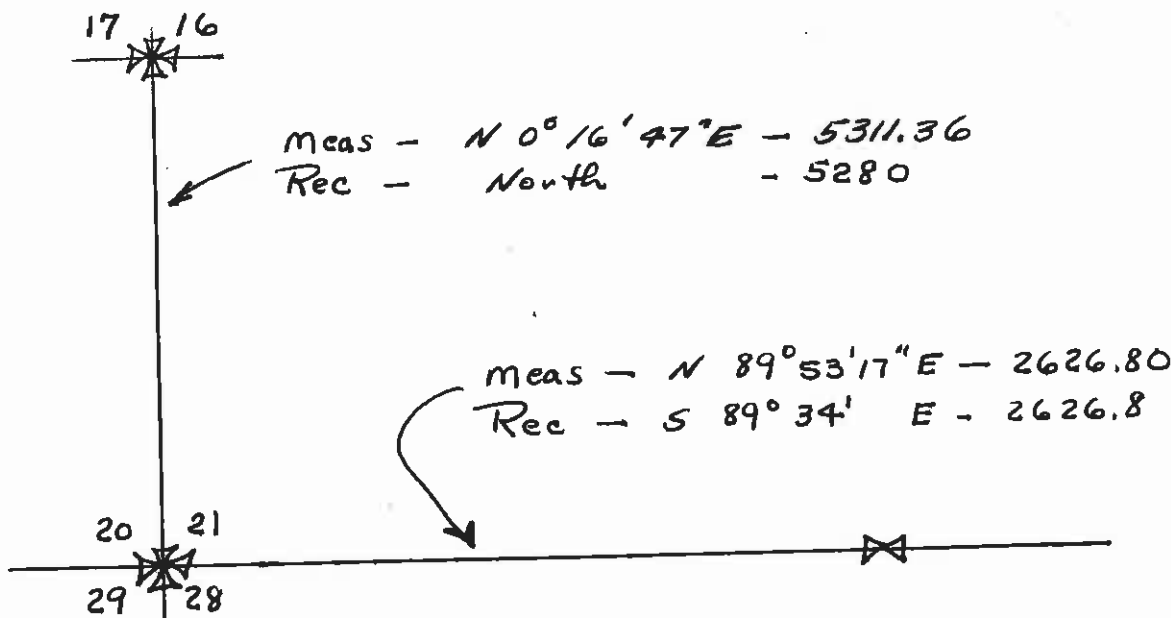
CERTIFIED CORNER RECORDATION

Corner SW Cor - Sec. 21 T. 6N R. 9W P.M.M. Deer Lodge County

Original 1869 field notes - set cor to sec. 20, 21, 28, 29 - a granite stone 12x12x10 in., with pits marked stone (to?) as per instructions.

No marker found - granite stone of approx described size found loose at fence cor. - No markings visible.

Existing fence corner used for previous surveys (C.O.S #46A & deed book 42-308) considered to be best available evidence (also 5.00 chains + 330 ft± west of old road) Set new 5/8" x 24" rebar with 1 1/2" Alum. Cap adjacent SW of existing fence Cor Post.



SKETCH OF CORNER

CERTIFICATION

I, _____, certify the information shown herein is true and correct.

Signature Ground Party Chief

RAY G. MASTERS

I, _____, certify that this Corner Record correctly represents work performed by me or under my direction in compliance with the "Corner Recordation Act" (70-22-101, et seq., M.D.A.)

Ray G. Masters
Signature of Surveyor & Seal

Date: 10-23-84 Reg. No. 821 S

Employer: Self

Office of Clerk and Recorder, County of Deer Lodge. This "corner record" was filed for record on the 10th of December day of 1984. was noted on the cross-index plat and is assigned page No. 254, in book No. 2.
Rec # 125317
Therese Jones, Deputy
County Official

Cross Index No. R9 T. 6N R. 9W P.M.M.

Sec. 21

• - corner this sheet