

- INSTRUCTIONS**
1. Original and/or subsequent record used to establish the corner position.
 2. Description of evidence found, note discrepancy in the record, state method of establishing lost or obliterated corners.
 3. Description of monument and accessories set to perpetuate the corner position.
 4. Sketch of corner, show all pertinent data which can best be shown in a sketch example, corner marking, topography ties, position of accessories, etc.
 5. Certification must be signed and sealed by Registered Land Surveyor in State of Montana.
 6. Fill in Cross Index & Section Diagram at bottom of sheet.

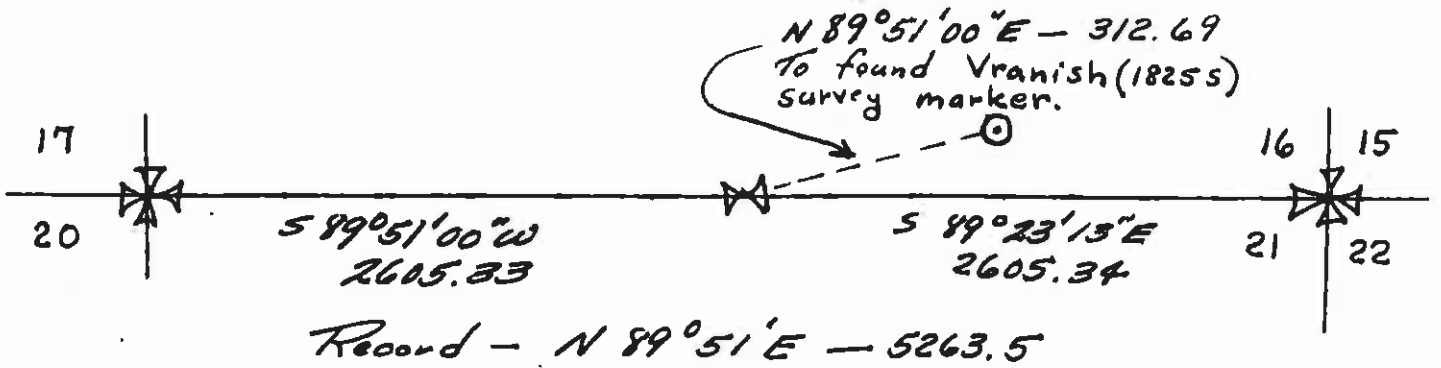
CERTIFIED CORNER RECORDATION Powell &

Corner North 1/4 - Sec. 21 T. 6N R. 9W P.M.M. Deer Lodge County

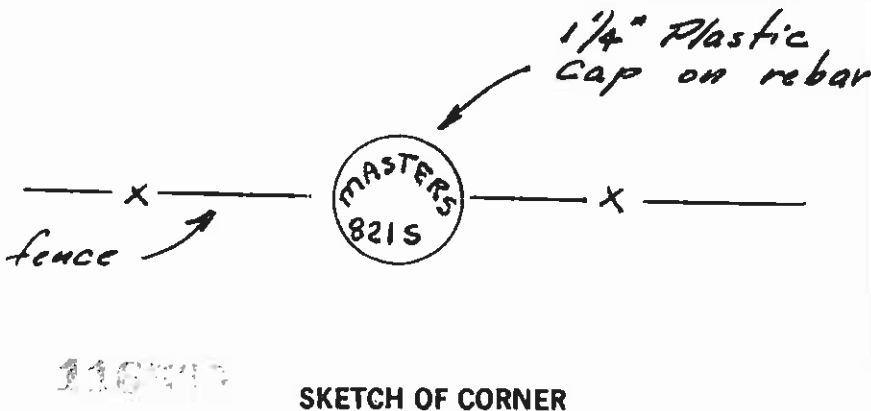
Orig 1869 field notes - Set 1/4 sec. Cor (a post) drove charred stake in mound of earth with pits (etc?) as per instructions

No Marker found.

Re-established 1/4 Corner location by single proportion between found set NE Sec. Cor. stone & found ref marker for NW Sec. Cor. - except line along west 1/2 of north line used for C.O.S. #'s 18, 7C & 19D used to establish that part.
Set 5/8" x 24" rebar with 1/4" Plastic Cap - stamped "Masters 821 S" under existing fence line.



Basis of bearing west 1/2 of north line of Sec. 21 as shown on C.O.S. # 18, 7C, & 19D (Deer Lodge County)



CERTIFICATION

I, _____ certify the information shown herein is true and correct

Signature Ground Party Chief
RAY G. MASTERS

I, _____ certify that this Corner Record correctly represents work performed by me or under my direction in compliance with the "Corner Recordation Act" (70-22-101, et seq. M.C.A.)

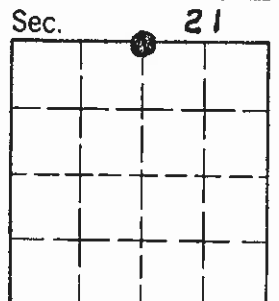
Ray G. Masters
Signature of Surveyor & Seal

Date: 10-19-84 Reg. No. 821 S

Employer: Self

Office of Clerk and Recorder, County of Powell. This "corner record" was filed for record on the December 7, @ 3:12 P.M. day of 19 84 was noted on the cross-index plat and is assigned page No. _____, in book No. _____

County Official
Cross Index No. N 11 T. 6N R. 9W P.M.M.



• corner this sheet