

INSTRUCTIONS

1. Original and/or subsequent record used to evaluate the corner position.
2. Description of evidence found, note discrepancies in the record, state method of establishing lost or obliterated corners.
3. Description of monument and accessories set to perpetuate the corner position.
4. Sketch of corner, show all pertinent data which can best be shown in a sketch example, corner marking, topography ties, position of accessories, etc.
5. Certification must be signed and sealed by Land Surveyor registered in the State of Montana.
6. Fill in Cross Index & Section Diagram at bottom of sheet.

CERTIFIED CORNER RECORDATION

Corner Sections 15, 16, 21 & 22 T. 6 N. R. 9 W. P.M.M. Powell & Deer Lodge County

ORIGINAL RECORD: (1869 G.L.O.)
Set cor. to secs. 15, 16, 21 & 22, a red sandstone 15x10x8 ins. with pits marked stone as per instructions.

SUBSEQUENT RECORD: (1984 R.G. Masters - Corner Recordation Form No. 116535)
Found red stone loosely set in cntr of mound of stones. Apparent faint 3 marks ea on south and east sides of stone.
Firmed set position of stone in mound and added more stones to mound.

EVIDENCE FOUND: Found 3/4" Brass Cap, marked as shown below, 0.45' above ground, from which:
A fence corner post, bears east, 0.5 ft. dist.
Found loose red sandstone, 15x10x8 ins. alongside.

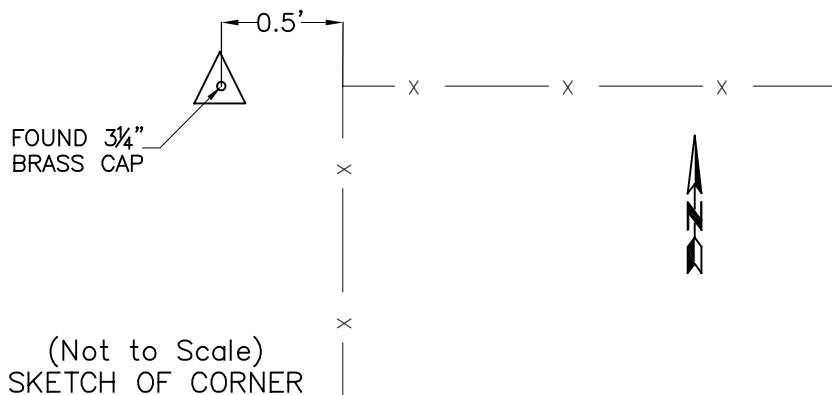
PERPETUATION: Left monument as found.

Located on steep northwest facing slope above ravine, approx. 0.3 mile north of two track road.

Date of Survey: September, 2009.



NAD 83 coordinates for this corner:
Latitude = 46°15'59.03115"N Longitude = 112°43'27.48092"W
NOTE: These coordinates are to be used as a search tool only.



CERTIFICATION

I, Steve Cummings
certify the information shown herein is true and correct.

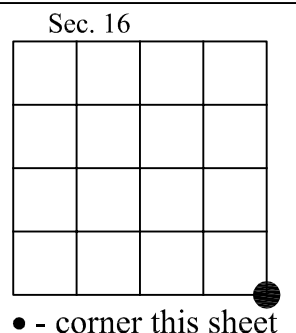
Signature Ground Party Chief

I, Kurt A. Luebke
certify that this Corner Record correctly represents work performed by me or under my direction in compliance with the "Corner Recordation Act" (70-22-101, et seq., M.C.A.)

Signature of Surveyor & Seal

Date: 12-22-2009 Reg. No. 13237 S

Employer: DJ&A P. C.



Cross Index No. N-13 T. 6 N. R. 9 W. PMM