

INSTRUCTIONS

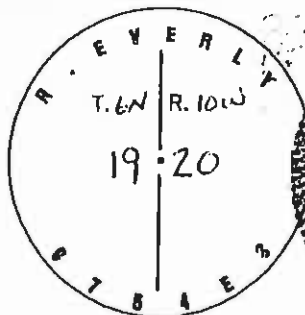
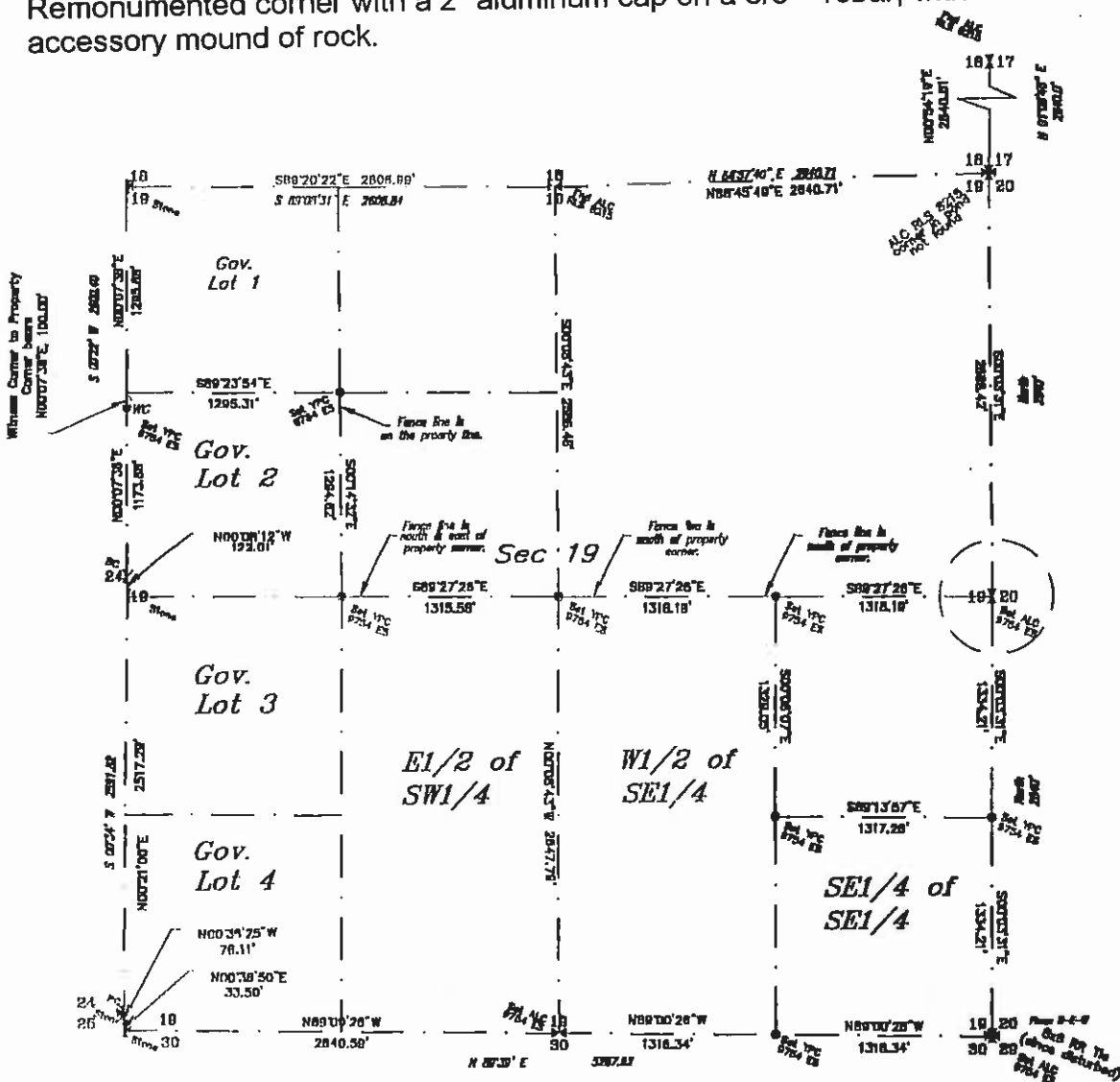
1. Original and/or subsequent record used to evaluate the corner position.
2. Description of evidence found, note discrepancies in the record, state method of establishing lost or obliterated corners.
3. Description of monument and accessories set to perpetuate the corner position.
4. Sketch of corner, show all pertinent data which can best be shown in a sketch example, corner marking, topography ties, position of accessories, etc.
5. Certification must be signed and sealed by Land Surveyor registered in the State of Montana.
6. Fill in Cross Index & Section Diagram at bottom of sheet.

CERTIFIED CORNER RECORDATION

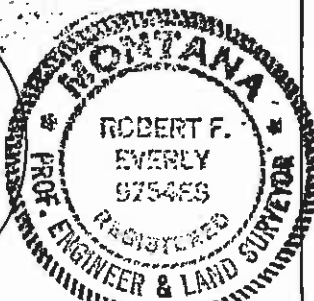
Corner E 1/4 Corner Sec 19 T. 6N R. 10W P.M.M. Anaconda - Deer Lodge County
 Record: 18x15x12 quartzite stone, chiseled "1/4", & dug pits.

Quarter Corner common to Sections 19 & 20 was not located. Used single proportionate measure to calculate the location of Master's Southeast Corner of Section 18 from the found Master's South 1/4 Corner of Section 18 to the found East 1/4 Corner of Section 18. Single proportionate measures were then used to calculate position of East 1/4 Corner of Section 19 from the recal of the Northeast Corner of Section 19 and the accepted Southeast Corner of Section 19.

Remonumented corner with a 2" aluminum cap on a 5/8" rebar, with an accessory mound of rock.



SKETCH OF CORNER

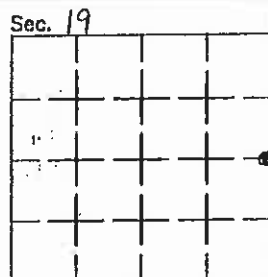


Certification

I, Kevin P. Biastoch
 certify the information shown herein is true and correct.
 Signature Ground Party Chief
Robert F. Everly
 certify that this Corner Record correctly represents work performed by me or under my direction in compliance with the "Corner Recordation Act" (70-22-101, et seq., M.C.A.)
 Signature of Surveyor & Seal
Robert F. Everly
 Date: 10/11/99 Reg. No. 9754ES
 Employer: Everly & Associates
Butte, Montana

Office of Clerk and Recorder, County of DEER LODGE. This "corner record" was filed for record on OCT 14 1999

was noted on the cross-index plat and is assigned page No. 518, in book No. 2
Barbara J. Vaughn, DEPUTY
 County Official



corner this sheet