

INSTRUCTIONS

1. Original and/or subsequent record used to evaluate the corner position.
2. Description of evidence found, note discrepancies in the record, state method of establishing lost or obliterated corners.
3. Description of monument and accessories set to perpetuate the corner position.
4. Sketch of corner, show all pertinent data which can best be shown in a sketch example, corner marking, topography ties, position of accessories, etc.
5. Certification must be signed and sealed by Land Surveyor registered in the State of Montana.
6. Fill in Cross Index & Section Diagram at bottom of sheet.

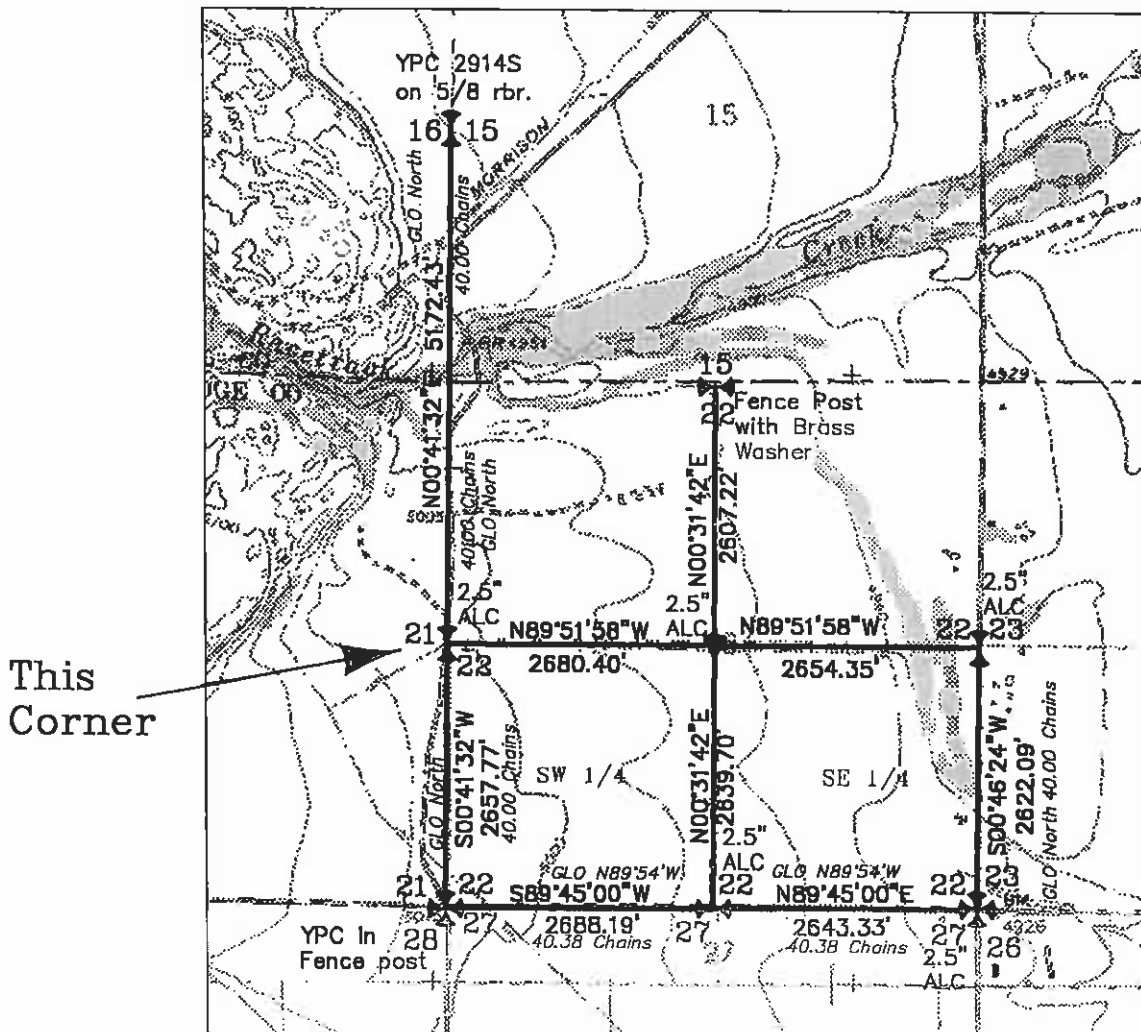
CERTIFIED CORNER RECORDATION

1/4 Corner Section 21/22, Township 6 North, Range 10 West P.M.M., Deer Lodge County

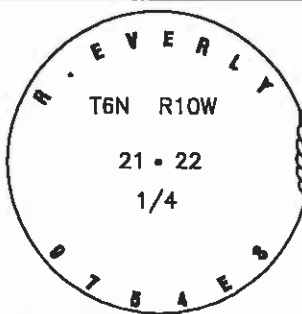
Record, GLO 1868: 40.00 Set 1/4 sec car. a post in mound of earth with pits charred stake & as per instructions.

Found: No trace of original monument or accessories.

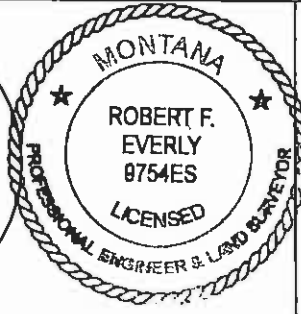
Re-established: The corner point at a point of intersection with the line between the 1/4 section corner of Sections 16/15 and the Southwest corner of Section 22 and an old E-W Jack fence projected westerly (which provides the best evidence of the northing of this corner). Set a 2.5" aluminum cap on a 5/8" rebar 24" long, set (6" buried) alongside the roadbed, with Bearing Tree Signs on Fence posts which bear S43°W, 16.8 feet and S82°E, 58.7 feet; to the sign.



VICINITY MAP
Section subdivision



SKETCH OF CORNER



Certification

I, David P. Neeley, 14015 LSI, certify the information shown herein is true and correct.

Signature Ground Party Chief *David P. Neeley*

I, Robert F. Everly certify that this Corner Record correctly represents work performed by me or under my direction in compliance with the "Corner Recordation Act" (70-22-101, et seq., M.C.A.)

Signature of Surveyor & Seal *Robert F. Everly*

Date: 8-29-02 Reg. No. 9754ES

Employer: *EVERLY & ASSOCIATES*

Office of Clerk and Recorder, County of DEER LODGE. This "corner

record" was filed for record on SEPTEMBER 4, 2002

was noted on the cross-index plat and is assigned page No. 549, in

book No. 2

Barbara Vaughn
County Official

Cross Index No. P-183 T. 6 N R.10 W P.M.M.

Adopted July 1, 1981, Montana Board of Professional Engineers & Land Surveyors

	Sec. 22	

● corner this sheet