

INSTRUCTIONS

1. Original and/or subsequent record used to evaluate the corner position.
2. Description of evidence found, note discrepancies in the record, state method of establishing lost or obliterated corners.
3. Description of monument and accessories set to perpetuate the corner position.
4. Sketch of corner, show all pertinent data which can best be shown in a sketch example, corner marking, topography ties, position of accessories, etc.
5. Certification must be signed and sealed by Land Surveyor registered in the State of Montana.
6. Fill in Cross Index & Section Diagram at bottom of sheet.

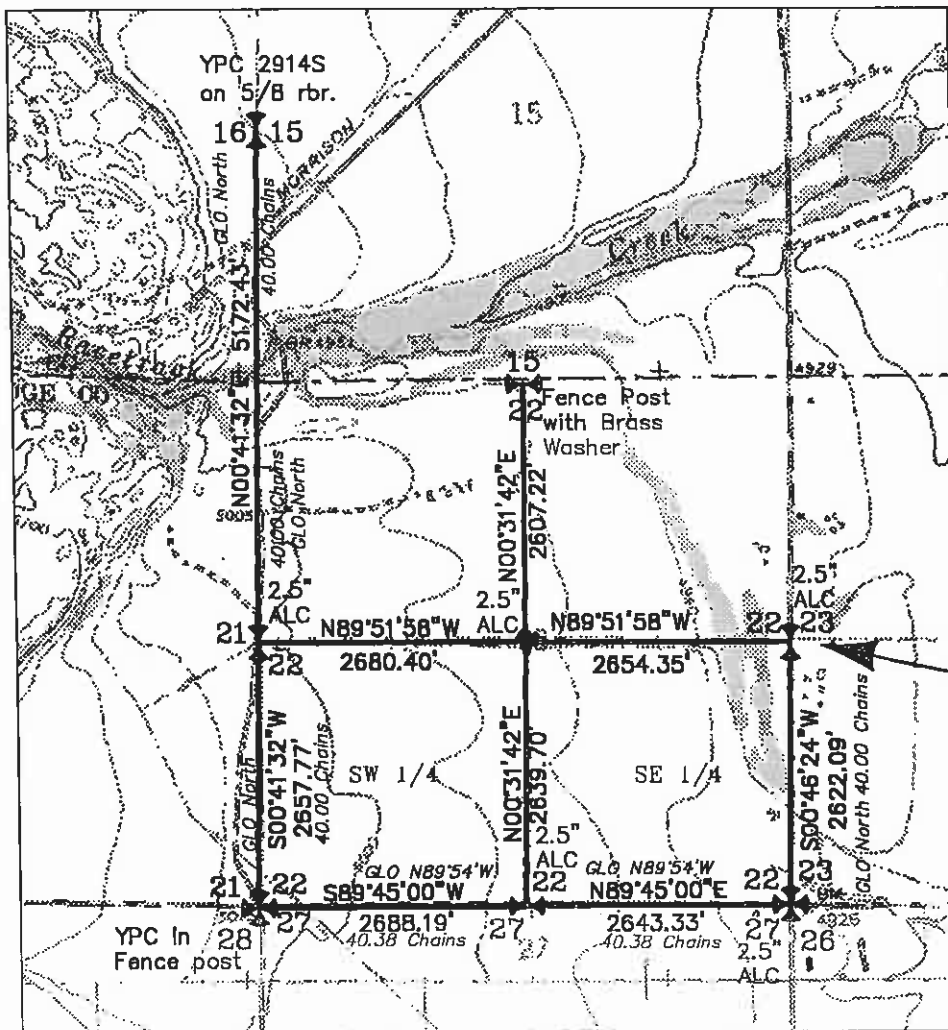
CERTIFIED CORNER RECORDATION

1/4 Corner Section 22/23, Township 6 North, Range 10 West, P.M.M., Deer Lodge County

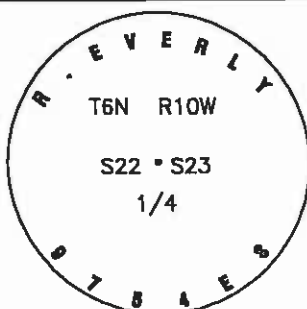
Record, GLO 1868: 40.00 Set 1/4 sec cor. a post in mound of earth with pits charred stake & as per Instructions.

Found: No trace of original monument or accessories.

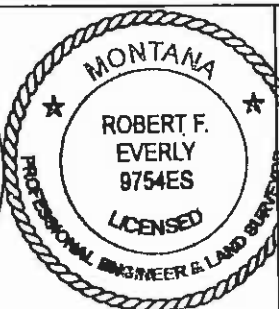
Re-established: corner point at the average centerline of N-S county road, at the projected line of the north boundary of the "Remainder Tract" of C.O.S. 29-A. Set a 2.5" aluminum cap on a 5/8" rebar 24" long, set (6" buried) in the roadbed, with two witness corners one a YPC marked R EVERLY 9754ES on a 5/8" rebar which bears N89°51'58"W, 31.90 feet and a YPC marked SHELTON 3538ES S88°35'55"E, 31.90 feet.



VICINITY MAP
Section subdivision



SKETCH OF CORNER



Certification

I, David P. Neeley, 14015 LSI, certify the information shown herein is true and correct.
David P. Neeley
 Signature Ground Party Chief
 I, Robert F. Everly, certify that this Corner Record correctly represents work performed by me or under my direction in compliance with the "Corner Recordation Act" (70-22-10, et seq., M.C.A.)
Robert F. Everly
 Signature of Surveyor & Seal
 Date: 8-29-02 Reg. No. 9754ES
 Employer: EVERLY & ASSOCIATES

Office of Clerk and Recorder, County of DEER LODGE. This "corner record" was filed for record on SEPTEMBER 4, 2002 was noted on the cross-index plat and is assigned page No. 546, in book No. 2 *Barbara J. Vaughn, DEPUTY* County Official
