

CERTIFIED LAND CORNER RECORDATION

DESCRIPTION OF CORNER EVIDENCE FOUND, AND ORIGINAL RECORD (IF KNOWN)

1. Corner to Section 28, 29, 32, 33 T6N, R13W
 Record: Quartsite stone 20x14x6 ins., 15 ins. in the ground marked 1 notch South and 4 notches East.
 Found: Stone 10"x7"x10" above ground marked 1 notch South and 4 notches East & 4 BT (3 original and 1 extra from some unrecorded survey)
 BTs - N12°E 2 lks., S59°E 33 lks., S13½°W 38 lks., N57°W 44 lks.
- ②. ¼ Corner between Sections 32 & 29 T6N R13W
 Record: Pine post - pits and mound - 1 chain west of creek
 Found: No evidence

DESCRIPTION OF MONUMENT AND ACCESSORIES ESTABLISHED TO PERPETUATE THE ORIGINAL LOCATION OF THIS CORNER:

Date of work: Nov. 1979

We set 30"x2" galvanized pipes with brass caps marked with corner information date, and 1888ES. Also set a red fiberglass post with attention sign alongside each monument.

1. BTs - 13" pine N19°E 13.4 ft. (found but not original); 15" pine S62°E 20.8 ft.; 15" pine N55°W 29 ft.; 9" pine (dead) S11°W 24.5 ft.
2. No trees near enough for BTs - This corner was set by single proportionate measure.

SKETCH, WITH COURSE AND DISTANCE TO ADJACENT CORNERS IF DETERMINED IN THIS SURVEY. (MAY SKETCH OR PASTE REPRODUCTION ON REVERSE SIDE.)

Note: 8 minor allequot corners were monumented in this survey- See Certificate of Survey #112 BTs on these minor subdivision corners should be treated as accessories to help locate the corner but if the corner is destroyed it should be replaced from adjoining monuments.

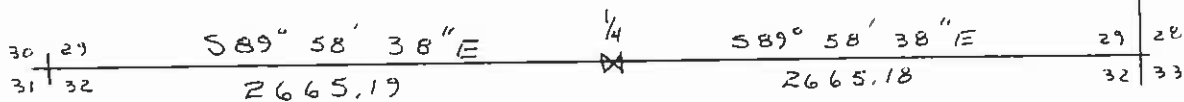
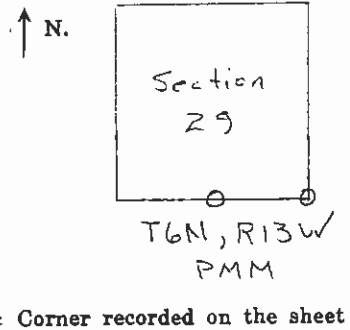
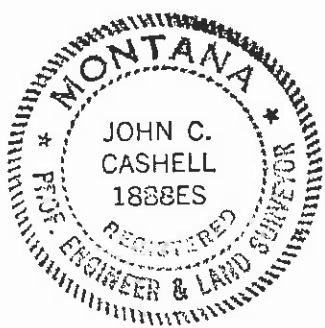


DIAGRAM OF CORNER:



Surveyor's Seal



I, David M. Albert
 certify that the information shown herein is true and correct.
David M. Albert
 Signature of Ground Party Chief

I, John C. Cashell
 certify that I have carefully performed or reviewed the work done on the diagrammed corner as reported on this recordation form and approve the same.
John C. Cashell
 Signature of Surveyor

1888ES
 Registration Number

Office of Clerk and Recorder, County of Granite
 This "corner record" was filed for record on the 9th day of July, 1980, was noted on the cross-index plat and is assigned page No. _____, in book No. _____
Jim Hansen
 County Official