

CERTIFIED LAND CORNER RECORDATION

DESCRIPTION OF CORNER EVIDENCE FOUND, AND ORIGINAL RECORD (IF KNOWN)

ORIGINAL RECORD: GLO - SANDSTONE 14X12X4 In. 9In. IN THE GROUND, MARKED 1/4 ON THE WEST SIDE
 NO EVIDENCE OF ORIGINAL CORNER

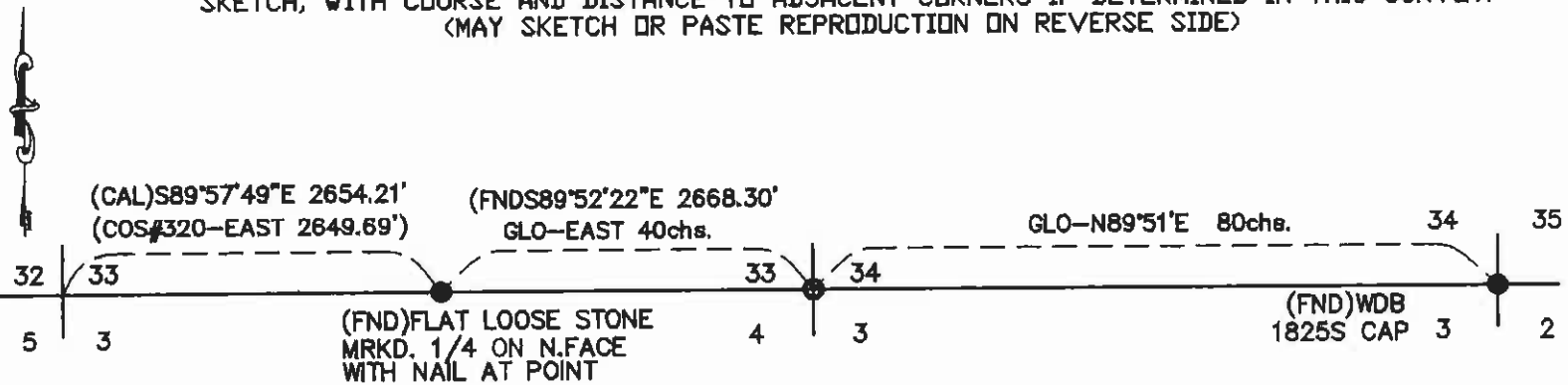
FOUND LOOSE REBAR WITH CAP MARKED 3538 S TIED TO FENCE NEAR CORNER POSITION

DESCRIPTION OF MONUMENT AND ACCESSORIES ESTABLISHED
 TO PERPETUATE THE ORIGINAL LOCATION OF THIS CORNER:

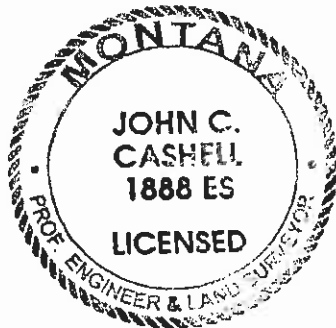
APRIL 2007
 Date of work:.....

THIS CORNER, WAS RE-ESTABLISHED FROM EXISTING GOVERNMENT LAND NOTES
 SET 2-1/2" ALUMINUM CAP MARKED CASHELL ENGRS. 1888ES FOR SECTIONS 33,34,3 AND 4

SKETCH, WITH COURSE AND DISTANCE TO ADJACENT CORNERS IF DETERMINED IN THIS SURVEY.
 (MAY SKETCH OR PASTE REPRODUCTION ON REVERSE SIDE)



Surveyor's Seal



I, WILL DANFORTH
 certify that the information shown herein is true and correct.

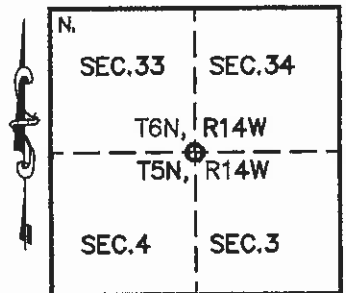
William Danforth
 Signature of Ground Party Chief

I, JOHN C. CASHELL
 certify that I have carefully performed or reviewed the work done on the diagrammed corner as reported on this recordation form and approve the same.

John C. Cashell
 Signature of Surveyor

1888ES
 Registration Number

DIAGRAM OF CORNER:



○ = Corner recorded on the sheet

Office of Clerk and Recorder, County of Granite

This 'corner record' was filed for record on the 1st day of Jan, 2002, at 8:40 AM, was noted on the cross-index plat and assigned page No. _____, in book No. 43769

Blanche Pederson
 County Official

Cross Index No. A-13 T. 5 R. 14 Mer.