

INSTRUCTIONS

1. Original and/or subsequent record used to evaluate the corner position.
2. Description of evidence found, note discrepancies in the record, state method of establishing lost or obliterated corners.
3. Description of monument and accessories set to perpetuate the corner position.
4. Sketch of corner, show all pertinent data which can best be shown in a sketch example, corner marking, topography ties, position of accessories, etc.
5. Certification must be signed and sealed by Land Surveyor registered in the State of Montana.
6. Fill in Cross Index & Section Diagram at bottom of sheet.

CERTIFIED CORNER RECORDATION

Corner Sections 36, 31, 1 & 6 T. 5&6 N. R. 13&14 W. P.M.M. Granite County

ORIGINAL RECORD: (G.L.O.) Not recovered.

SUBSEQUENT RECORD: (1967 B.L.M.)

Set an iron post, 30 ins. long, 2½ ins. diam., 24 ins. in the ground, with brass cap mkd. [as shown below] from which:
 A fir, 24 ins. diam., bears N. 36½° E., 49 lks. dist., with scribing overgrown.
 A fir, 14 ins. diam., bears S. 19½° E., 57 lks. dist., mkd. T5N R13W S6 BT.
 A fir, 18 ins. diam., bears S. 55° W., 25 lks. dist., visibly mkd. N R14W S1 BT.
 A fir, 20 ins. diam., bears N. 51¾° W., 15 lks. dist., mkd. T6N R14W S36 BT.
 Bury the original stone alongside and raise a collar of stone, 3 ft. diam., around the iron post.

EVIDENCE FOUND: Found ¾" Brass Cap, 0.4' above ground, from which:
 A pine, 23 ins. diam., scribing visible, bears N51°15'W, 15 lks. dist.
 A pine, 30 ins. diam., scribing visible, bears N36°15'E, 48 lks. dist.
 A pine, 23 ins. diam., scribing visible, bears S53°45'W, 25 lks. dist.
 A pine, 16 ins. diam., scribing visible, bears S11°E, 58 lks. dist.

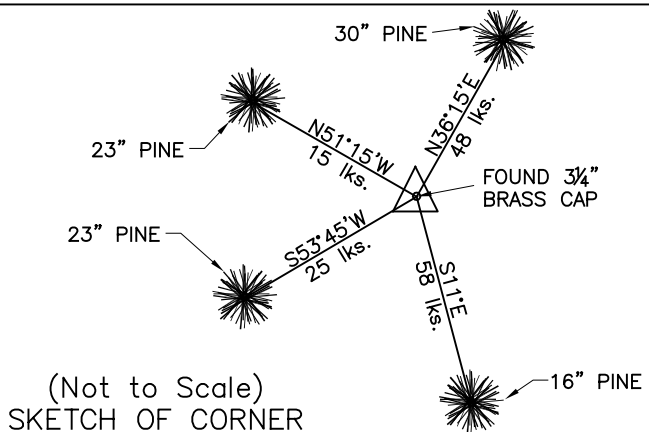
PERPETUATION: Left monument as found.

Located on west facing slope, approx. 120 feet downhill (west) of gravel road.

Date of Survey: October, 2009.



NAD 83 coordinates for this corner:
 Latitude = 46°13'22.01758"N Longitude = 113°17'04.31601"W
 NOTE: These coordinates are to be used as a search tool only.



CERTIFICATION

I, Steve Cummings
 certify the information shown herein is true and correct.

 Signature Ground Party Chief

I, Kurt A. Luebke
 certify that this Corner Record correctly represents work performed by me or under my direction in compliance with the "Corner Recordation Act" (70-22-101, et seq., M.C.A.)

 Signature of Surveyor & Seal

Date: 10-27-2009 Reg. No. 13237 S

Employer: DJ&A P. C.

Sec. 36

● - corner this sheet

Cross Index No. Z-25 T. 6 N. R. 14 W. PMM
 Cross Index No. Z-1 T. 6 N. R. 13 W. PMM
 Cross Index No. A-25 T. 5 N. R. 14 W. PMM
 Cross Index No. A-1 T. 5 N. R. 13 W. PMM