

# CERTIFIED CORNER RECORDATION

**74036**

Corner West 1/4 Section 7 T. 6 N. R. 20 E. P.M.M. Golden Valley County  
East 1/4 Section 12 6 N. 19 E.

**ORIGINAL RECORD:** (Kellogg, 1878) Set a sandstone 26x16x2 in. 19 in. in the ground for quarter section corner marked 1/4 on the west side. Dug pits 18 in. square 12 in. deep North, South, East, and West of corner 5 1/2 ft. distant.

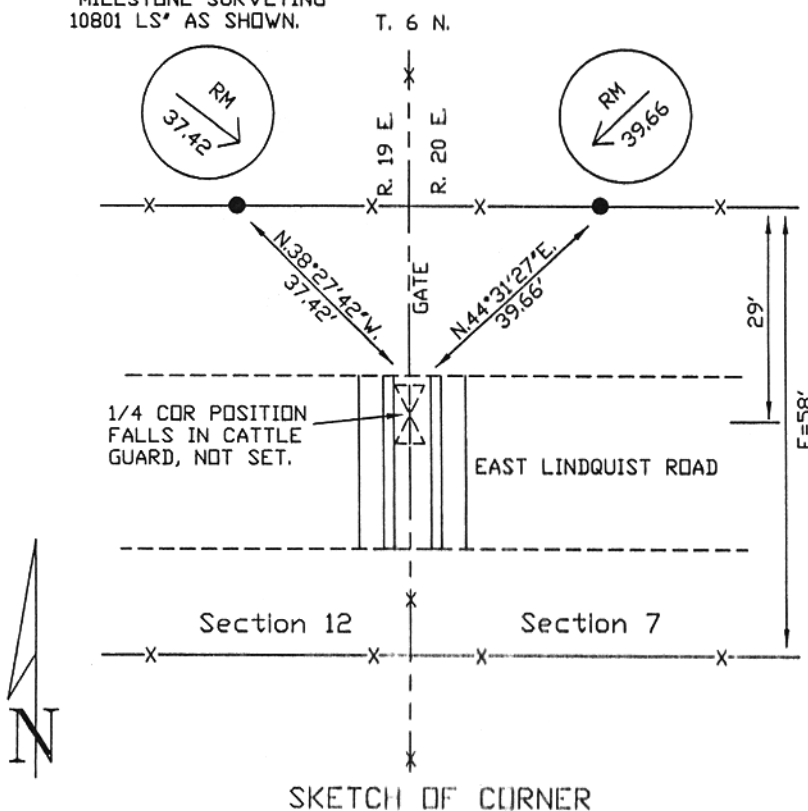
**SUBSEQUENT RECORD:** None.

**EVIDENCE FOUND:** (June, 1998) Nothing found due to construction of road.

**PERPETUATION:** (June, 1998) Parole testimony and physical evidence on the ground indicate that the East-West road was intended to intersect at the 1/4 corner position. Therefore, I accepted the centerline of the R/W fences and fence lines running North and South as the best evidence for the corner. The position falls in the North end of a cattle guard. Reference monuments were set as shown.

SEE DRAWING ON REVERSE SIDE

●=SET 5/8" RBR W/  
2" ALUM CAP MARKED  
"MILESTONE SURVEYING  
10801 LS" AS SHOWN.



98-178

CERTIFICATION	
I, _____ certify the information shown herein is true and correct.	
Signature Ground Party Chief	
Scott C. Koterba	
I, _____ certify that this Corner Record correctly represents work performed by me or under my direction in compliance with the "Corner Recordation Act" (70-22-10), et seq., M.C.A.)	
Signature of Surveyor & Seal	
Date: <u>6/22/98</u>	Reg. No. <u>10801 LS</u>
Employer: _____	Milestone Surveying

Office of Clerk and Recorder, County of Golden Valley. This "corner record" was filed for record on June 23, 1998 @ 11:40 A.M. was noted on the cross-index plat and is assigned page No. 203 in book No. 2

Rileen Mattheis by: Kathleen Ch...  
County Official deputy

Sec. 7


Cross Index No. G1 T. 6 N. R. 20 E. P.M.M.  
G25 6 N. 19 E.

● corner this sheet