

1. Original and subsequent record used to evaluate the corner position.
2. Description of evidence found, note discrepancies in the record, state method of finding lost or obliterated corners.
3. Description of monument and accessories set to perpetuate the corner position.
4. Sketch of corner, show all pertinent data which can best be shown in a sketch example, corner marking, topography etc., position of accessories, etc.
5. Certification must be signed and sealed by Land Surveyor registered in the State of Montana.
6. Fill in Cross Index & Section Diagram at bottom of sheet.

70773

CERTIFIED CORNER RECORDATION

Corner SEC. 6 T. 41 N. R. 20 E. P.M.M. GOLDEN VALLEY County

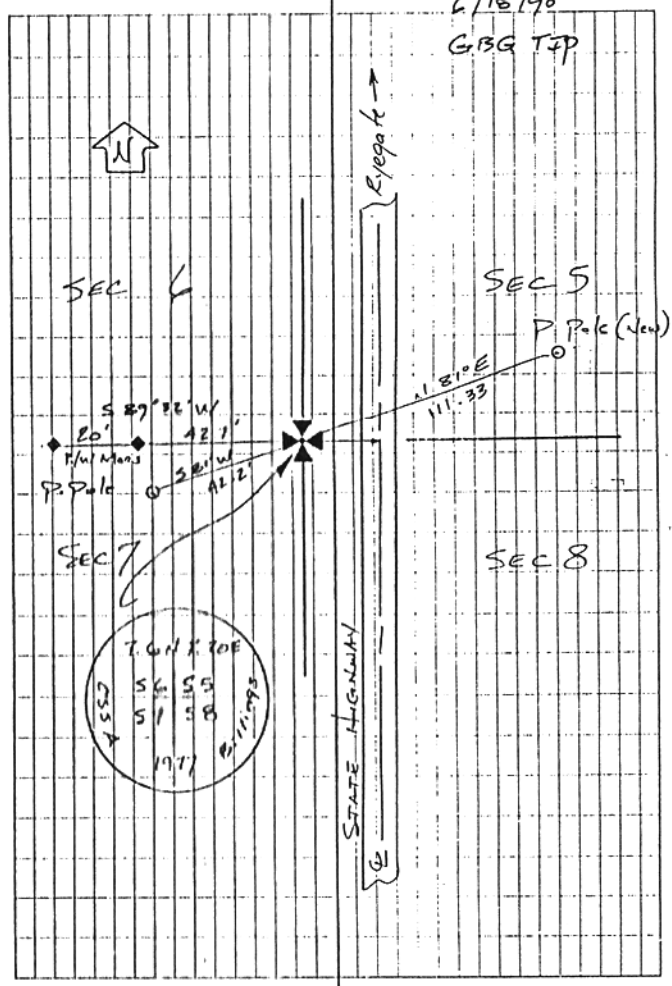
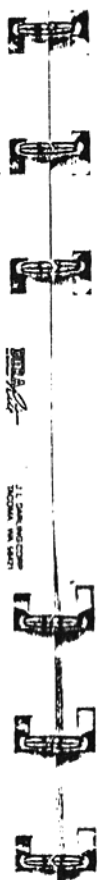
141-1990

RECORDATION T. 41 N. R. 20 E.

1877 Walter de Laoy and Germaine A. Kollogy, G.L.O. Deputy Surveyors. "Set a sandstone 30 x 20 x 2 in. 22 in. in the ground for corner to sections 5, 6, 7, & 8, marked with 5 notches S. & 5 notches E. Dig pits 18 ins. 8 1/2 in. deep diagonally in each section 5 1/2 ft. distant.

1977 CSSA re-established corner from state highway records indicating right of way monuments placed in reference to this corner. Monumented with 2 1/2" x 30" Iron Post with brass cap marked as shown right. (See 1977 Corner Recorrelation).

1990 mm/CSSA Found Brass cap monument as described above well set, with steel fence post 6" S. of corner. Pulled new survey ties as shown right. Corner falls 26 R' West of E. Highway.



No. 602

SKETCH OF CORNER

CERTIFICATE OF MONTANA

I, Gunnar Gettel certify the information shown herein is true and correct.

Gerald A. Pavlick
Signature of Land Surveyor
8382 S

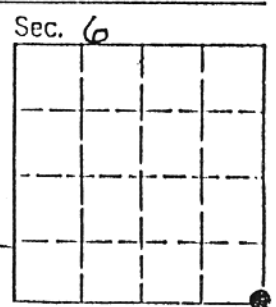
I, Gerald A. Pavlick certify that this Corner Record was prepared by me or under my direction in accordance with the "Corner Recordation Act" (10-22-101, et seq., M.C.A.)

Gerald A. Pavlick
Signature of Surveyor & Seal

Date: 6-27-90 Reg. No. 8382 S

Employer: MORRISON MAIERLE/CSSA

Office of Clerk and Recorder, County of Golden Valley. This "corner record" was filed for record on July 2, 1990 was noted on the cross-index plat and is assigned page No. 141, in book No. 2



70773

Cross Index No. E 5 T. 41 N. R. 20 E. P.M.M.

Geo. Gratio

• - corner this sheet