

INSTRUCTIONS

1. Original and/or subsequent record used to evaluate the corner position.
2. Description of evidence found, note discrepancies in the record, state method of establishing lost or obliterated corners.
3. Description of monument and accessories set to perpetuate the corner position.
4. Sketch of corner, show all pertinent data which can best be shown in a sketch example, corner marking, topography ties, position of accessories, etc.
5. Certification must be signed and sealed by Land Surveyor registered in the State of Montana.
6. Fill in Cross Index & Section Diagram at bottom of sheet.

238933

CERTIFIED CORNER RECORDATION

Corner Secs. 7, 8, 17 & 18 T. 6 N. R. 25 E. P.M.M. Musselshell County

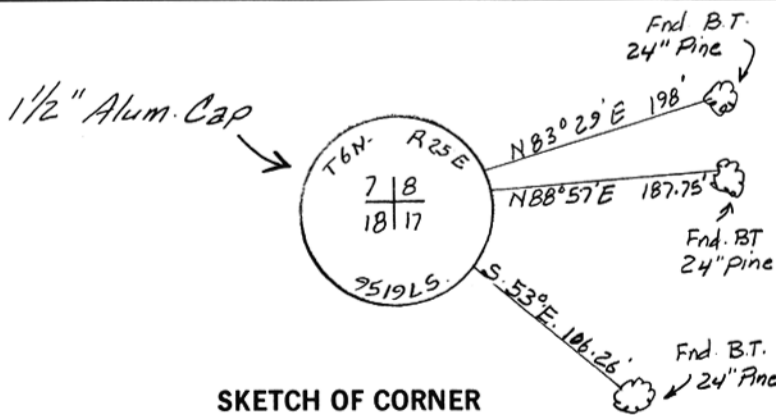
(ORIGINAL RECORD)

I. Set sandstone 18x15x12 ins. 12 ins in the ground. marked with 4 notches on south and 5 notches on East edges. From which:

- A 20" pine bears N. 83° E. 3.0 Chs.
- A 20" pine bears S. 86 1/2° E. 2.84 Chs.
- A 12" pine bears S. 45° W. 1.61 Chs.
- A 10" pine bears N. 23 1/2° W. 1.95 Chs.

II. Original stone not found. I believe it was destroyed during road construction as it falls on the westerly edge of Goulding Creek Road. Three original BT's were found. The trees were all live and scribed per the notes. The tree that was called to bear S. 45° W was found to bear S. 50° E. I feel the original notes were in error as the distances checked very well from all three trees. I reestablished the corner position from distance intersections from the three found. BT's.

III. Set 5/8" x 24" Rebar with 1 1/2" Alum. Cap. at corner position. Raise mound of stone around corner. Sign and paint BT's.



SKETCH OF CORNER

CERTIFICATION

I, Neil A. Bratton
certify the information shown herein is true and correct.

Neil A. Bratton
Signature Ground Party Chief

I, Neil A. Bratton, Jr.
certify that this Corner Record correctly represents work performed by me or under my direction in compliance with the "Corner Recordation Act" (70-22-101, et seq., M.C.A.)

Neil A. Bratton, Jr.
Signature of Surveyor & Sec. 519 LS

Date: 5/14/89 Reg. No. 7519 LS

Employer: _____



Office of Clerk and Recorder, County of Musselshell. This "corner record" was filed for record on June 15, 1994 10:38 AM was noted on the cross-index plat and is assigned page No. _____, in book No. _____ by JANE E. MANG Nanna M. Weigmann County Official

Sec. 8

Cross Index No. J-5 T. 6 N. R. 25 E. P.M.M.

• - corner this sheet