

CERTIFIED CORNER RECORDATION

Corner WEST 1/4 SECTION 11 T. 6N R. 25E P.M.M. MUSSELSHELL County

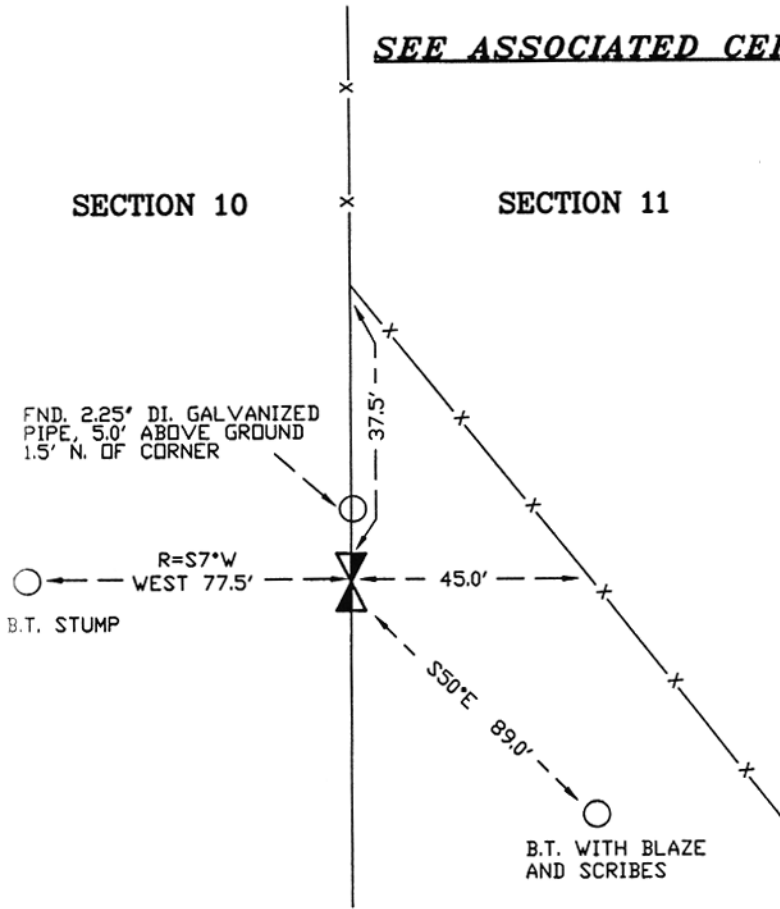
ORIGINAL RECORD: (Cumming, 1905) Set a sandstone 16 x 12 x 3 ins. 11 ins. in the ground for 1/4 section corner. Marked 1/4 on W. face from which pine 12 ins. diameter bears S50°E, 1.34 chs distance marked 1/4 S.11 B.T. Pine 24 ins. diameter bears S7°W, 1.17 chs distance marked 1/4S10 B.T.

SUBSEQUENT RECORD: None

EVIDENCE FOUND: (March 2001) Found 11"x15"x3" sandstone firmly set in north-south direction with faint markings on the east face. Found original bearing tree to the southeast with original blaze and scribes, and found bearing tree stump to the west. Distances to bearing trees from stone were the same as the original stone.

PERPETUATION: (March 2001) Accepted stone as the original corner and replaced with 5/8" rebar with 2" aluminum cap. See drawing below.

SEE ASSOCIATED CERTIFICATE OF SURVEY



PN: 01-369

CERTIFICATION	
I, _____	certify the information shown herein is true and correct.
Signature Ground Party Chief	
Scott C. Koterba	
I, _____	
certify that this Corner Record correctly represents work performed by me or under my direction in compliance with the 'Corner Recordation Act' (70-22-101, et seq, M.C.A.)	
Signature of Surveyor & Seal	
Date: <u>1/25/02</u>	Reg. No. <u>10801 LS</u>
Employer: _____	Milestone Surveying

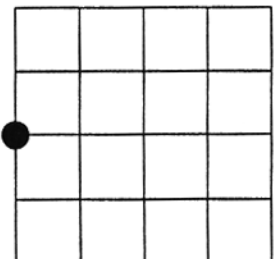
SKETCH OF CORNER

Office of Clerk 255276 Fee \$.00
 record' was fil MUSSELSHELL COUNTY
 was noted on 1 Recorded 01/28/2002 At 01:32 PM
 By Jane E Mang, Clerk and Recorder
 Deputy Judith B Hawkins

book No. _____ County Official _____

Cross Index No. G-17 T. 6N R. 25E PMM

Sec. 11



• corner this sheet