

# CERTIFIED CORNER RECORDATION

Corner Corner common to Sections 7, 12, 13 & 18 T. 6N R. 25&26 E P.M.M. MUSSELSHELL County

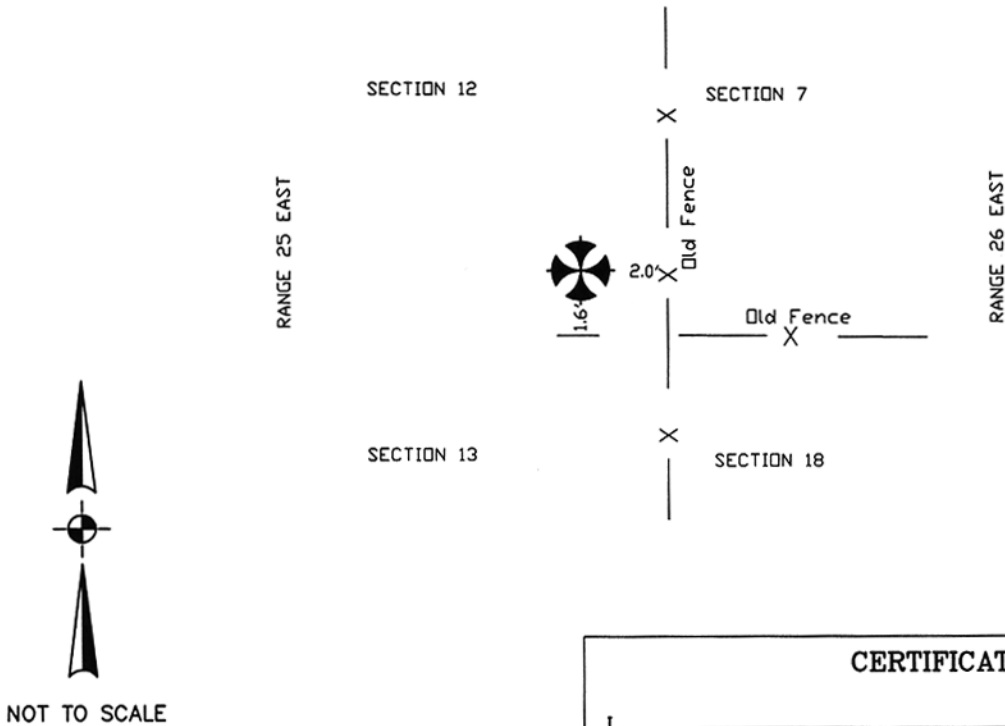
**ORIGINAL RECORD:** (Cumming, 1904) Set a sandstone, 15 x 12 x 3 ins. 10 ins. in the ground, for cor. of secs. 7, 12, 13, and 18 marked with 2 notches on N. and 4 notches on S. edges; from which a pine 15 ins. diam. bears N9 1/2°E. 2.98 chs. dist. marked T.6N. R.26E. S.7 B.T.; a pine 30 ins. diam. bears S84 3/4°E. 3.20 chs. dist. marked T.6N. R.26E. S.18 B.T.; a pine 10 ins. diam. bears S69°W. 3.25 chs. dist. marked T.6N. R.25E. S.13 B.T.; a pine 30 ins. diam. bears N26°W. 2.13 chs. dist. marked T.6N. R.25E. S.12 B.T.

**SUBSEQUENT RECORD:** Certificate of Survey 1977-18; Certificate of Survey 1978-27.

**EVIDENCE:** (December, 2002) Found original sandstone with faint notches 1.2 x 0.5 x 0.2 above ground.

**PERPETUATION:** Original corner found in acceptable condition; no further perpetuation done.

## SKETCH OF CORNER/CAP



## CERTIFICATION

I, \_\_\_\_\_  
certify the information shown herein is true and correct.

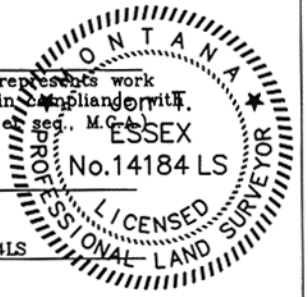
\_\_\_\_\_  
Signature Ground Party Chief

I, J.T. ESSEX  
certify that this Corner Record correctly represents work performed by me or under my direction in compliance with the "Corner Recordation Act" (70-22-101, et seq., M.C.A.)

J.T. Essex  
Signature of Surveyor & Seal

Date: 5/13/03 Reg. No. 14184LS

Employer: ESSEX SURVEYING, INC.



Office of Clerk and Recorder, County of \_\_\_\_\_

Fee \$ .00  
258026  
MUSSELSHELL COUNTY  
Recorded 05/19/2003 At 10:30 AM  
Jane E Mang, Clerk and Recorder  
By Judith B. Hawkins Deputy

\_\_\_\_\_. This "corner"

o. \_\_\_\_\_, in

\_\_\_\_\_  
County Official

Cross Index No. J1 - T 6 N R 26 E P.M.M.

Adopted July 1, 1981, Montana Board of Professional Engineers & Land Surveyors

Sec. 18


● corner this sheet