

INSTRUCTIONS

1. Original and/or subsequent record used to evaluate the corner position.
2. Description of evidence found, note discrepancies in the record, state method of establishing lost or obliterated corners.
3. Description of monument and accessories set to perpetuate the corner position.
4. Sketch of corner, show all pertinent data which can best be shown in a sketch example, corner marking, topography (lies, position of accessories, etc.
5. Certification must be signed and sealed by Land Surveyor registered in the State of Montana.
6. Fill in Cross Index & Section Diagram at bottom of sheet.

CERTIFIED CORNER RECORDATION

Corner SW. Cor. Sec. 32 (C.C.) T. 6N. R. 26E. P.M.M. Musselshell County

SW Cor. Sec. 32 T 6 N R 26 E (CC)

RECORD: 1904 S.W.D. BY F.L. CUMMING:
 SET SANDSTONE 18 X 9 X 5 INS FOR
 CLOSING CORNER OF SEC.'S 31 & 32 MKD
 CC ON N., 5 GROOVES ON E., 1 ON W.
 COR. OF SEC.'S 5 & 6, T. 5 N., R. 25 E.,
 BEARS S 89° 57' W., 2.88 CHS.

FOUND: FRACTURED SANDSTONE 16" X 2"
 FIRMLY SET BUT TOP BROKEN OFF, 18 FT.
 E. OF CORNER FENCE POST.

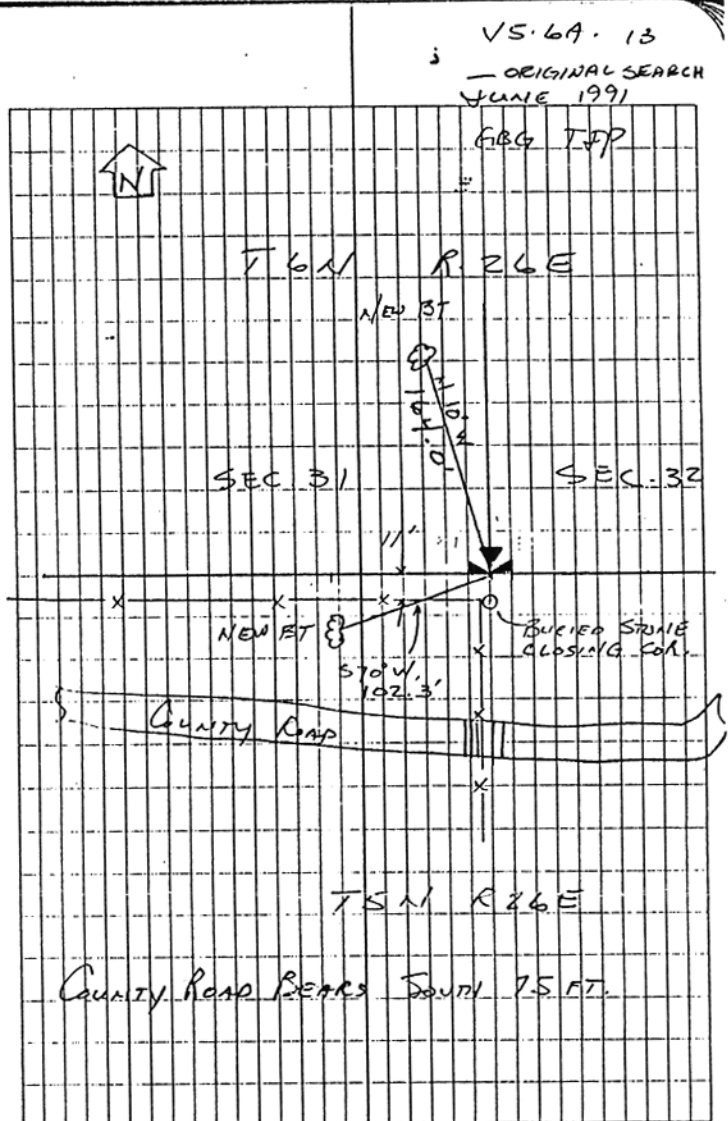
PERPETUATION: BURY FRACTURED STONE
 WHERE FOUND AND AT THE TRUE INTERSECT
 OF THE TOWNSHIP LINE SET A 3/4" X 30"
 BEBAR 25" IN THE GROUND WITH A 3/4"
 MM/CSSA ALUM. CAP MKD:

CC	
T 6 N	R 26 E
331	332
55	
T 5 N	R 26 E
1992	

BUILD MOUND OF STONE AROUND COR.
 MAKE 2 BT'S:

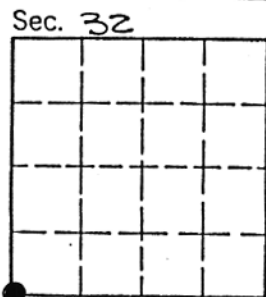
-16" P. PINE, BLAZED & SCRIBED "T 6 N R 26 E 331 CC BT"
 BEARS N 10° W, 164.0 FT.

-12" P. PINE, BLAZED & SCRIBED "X" AT BREAST HEIGHT,
 AND "BT" AT GASE, BEARS S 70° W, 102.3 FT.



SKETCH OF CORNER

Office of Clerk and Recorder, County of Musselshell. This "corner record" was filed for record on May 4, 1993 at 12:20 PM was noted on the cross-index plat and is assigned page No. _____, in book No. _____, in Volume 2 by Norma M. Weigmann County Official.



CERTIFICATION

I, _____ certify the information shown herein is true and correct.

Signature Ground Party Chief
GERALD A. PAYLICK

I, _____ certify that this Corner Record correctly represents work performed by me or under my direction in compliance with the "Corner Recordation Act" of the State of Montana.

Signature of Surveyor & Seal
Donald A. Steyer

Date: 4/29/93 Reg. No. 83825
 Employer: MORRISON MAIERLE/CSSA