

CERTIFIED LAND CORNER RECORDATION

DESCRIPTION OF CORNER EVIDENCE FOUND, AND ORIGINAL RECORD (IF KNOWN)

Found marked stone at fence corner - agrees with Government record

DESCRIPTION OF MONUMENT AND ACCESSORIES ESTABLISHED TO PERPETUATE THE ORIGINAL LOCATION OF THIS CORNER:

Date of work: Oct 1973

none done

SKETCH, WITH COURSE AND DISTANCE TO ADJACENT CORNERS IF DETERMINED IN THIS SURVEY. (MAY SKETCH OR PASTE REPRODUCTION ON REVERSE SIDE.)

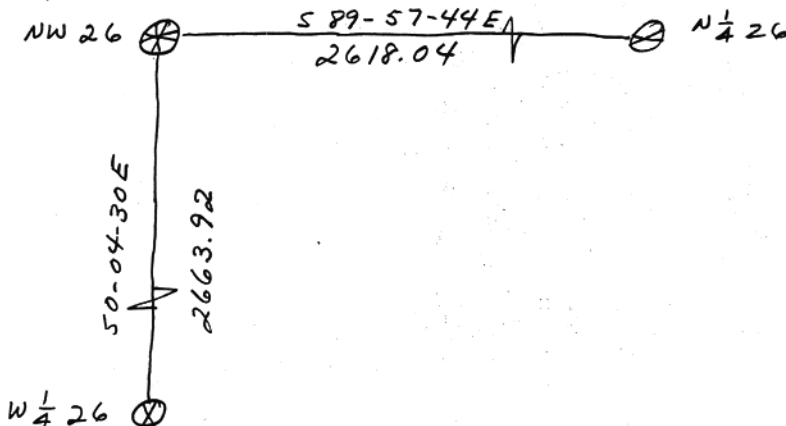
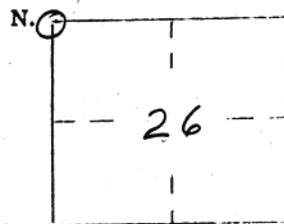


DIAGRAM OF CORNER:



T 6 N R 26 E = Corner recorded on the sheet

Surveyor's Seal



I, Robert M Ryan certify that the information shown herein is true and correct.

Robert M Ryan Signature of Ground Party Chief

I, Louis V. Taut certify that I have carefully performed or reviewed the work done on the diagrammed corner as reported on this recordation form and approve the same.

Louis V. Taut Signature of Surveyor

23585 Registration Number

Office of Clerk and Recorder, County of Musselshell This "corner record" was filed for record on the 14 day of December 1973 @ 3:46 P. assigned page No. in book No. Frances L. Dawson County Official