

INSTRUCTIONS

1. Original and/or subsequent record used to locate the corner position.
2. Description of evidence found, note discrepancies in the record.
3. Description of monument and accessories set to perpetuate the corner position.
4. Sketch of corner, show all pertinent data.
5. Certification must be signed and sealed by Land Surveyor licensed in the State of Montana.
6. Fill in index information and show the corner's approximate location within the section diagram.

CERTIFIED CORNER RECORDATION

Corner Quarter common to Sections 6 and 31 T. 6 & 7 N R. 9 W P.M. Powell County

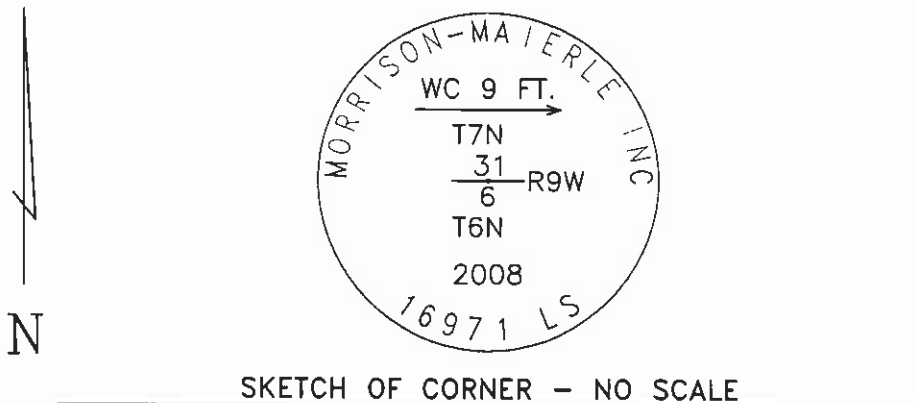
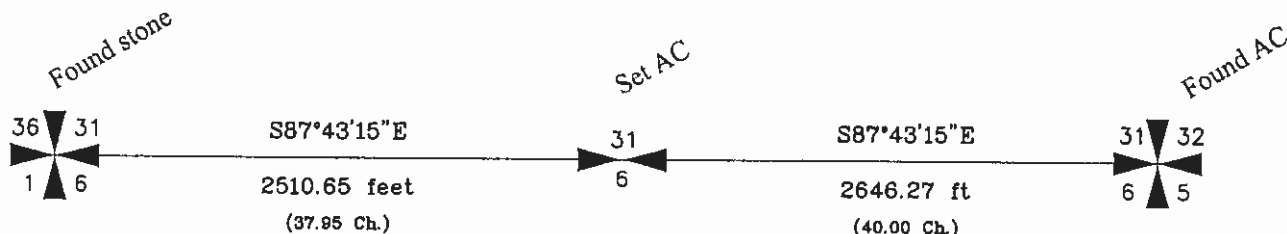
Original GLO Record - Walter W. Johnson, Deputy Surveyor, 1868
40.00 chains - "Set 1/4 sec. corner a post in mound of earth with pits charred stake as per instructions."

September, 2008 - No evidence of original GLO monumentation found.
Re-established location determined from proportionate measurement between found section corner monuments east and west. Position falls in irrigation ditch.

Set new 5/8" x 24" rebar with 2" Aluminum Cap as a witness corner to the true position.

Witness corner lies on the section line common to S6 & S31, 9.0 ft. west of true position
WC lies 2.4 ft. west of north/south fenceline
A T-post bears N25°E, 5.4 ft. from WC (MARLS tag on T-post)

See COS 709-RT for details.



SKETCH OF CORNER - NO SCALE

CERTIFICATION

I, HANS STREUFERT
certify the information shown herein is true and correct.

Hans Streufert
Deputy Surveyor and Party Chief

I, Hans Streufert, PLS
certify that the Corner Record recorded by me or under my direction represents work performed by me or under my direction in compliance with the "Corner Recordation Act" (70-22-101 et seq., M.C.A.)

HANS STREUFERT
Signature of Surveyor & Seal
16971

Date: Sept 16, 2008 Reg. No. 1971LS
Employer: Morrison-Maierle Inc. (406) 587-0721

Office of Clerk and Recorder
162928 Fee: \$0.00 Bk Pg

record" was filed for rePOWELL COUNTY Recorded 12/2/2008 At 1:35 PM
Diane S. Grey, Clk & Rcdr By Genta Beckels
Return To: **FILING**

book No. _____

County Official _____

Cross Index No. Z-3 T. 7 N R. 9 W PM
Cross Index No. A-3 T. 6 N R. 9 W PM

Sec. 31

• corner this sheet