

- INSTRUCTIONS
1. Original and/or subsequent record used to evaluate the corner position.
 2. Description of evidence found, note discrepancies in the record, state method of establishing lost or obliterated corners.
 3. Description of monument and accessories set to perpetuate the corner position.
 4. Sketch or corner, show all pertinent data which can best be shown in a sketch example, corner marking, topography ties, position of accessories, etc.
 5. Certification must be signed and sealed by Registered Land Surveyor in State of Montana.
 6. Fill in Cross Index & Section Diagram at bottom of sheet.

CERTIFIED CORNER RECORDATION

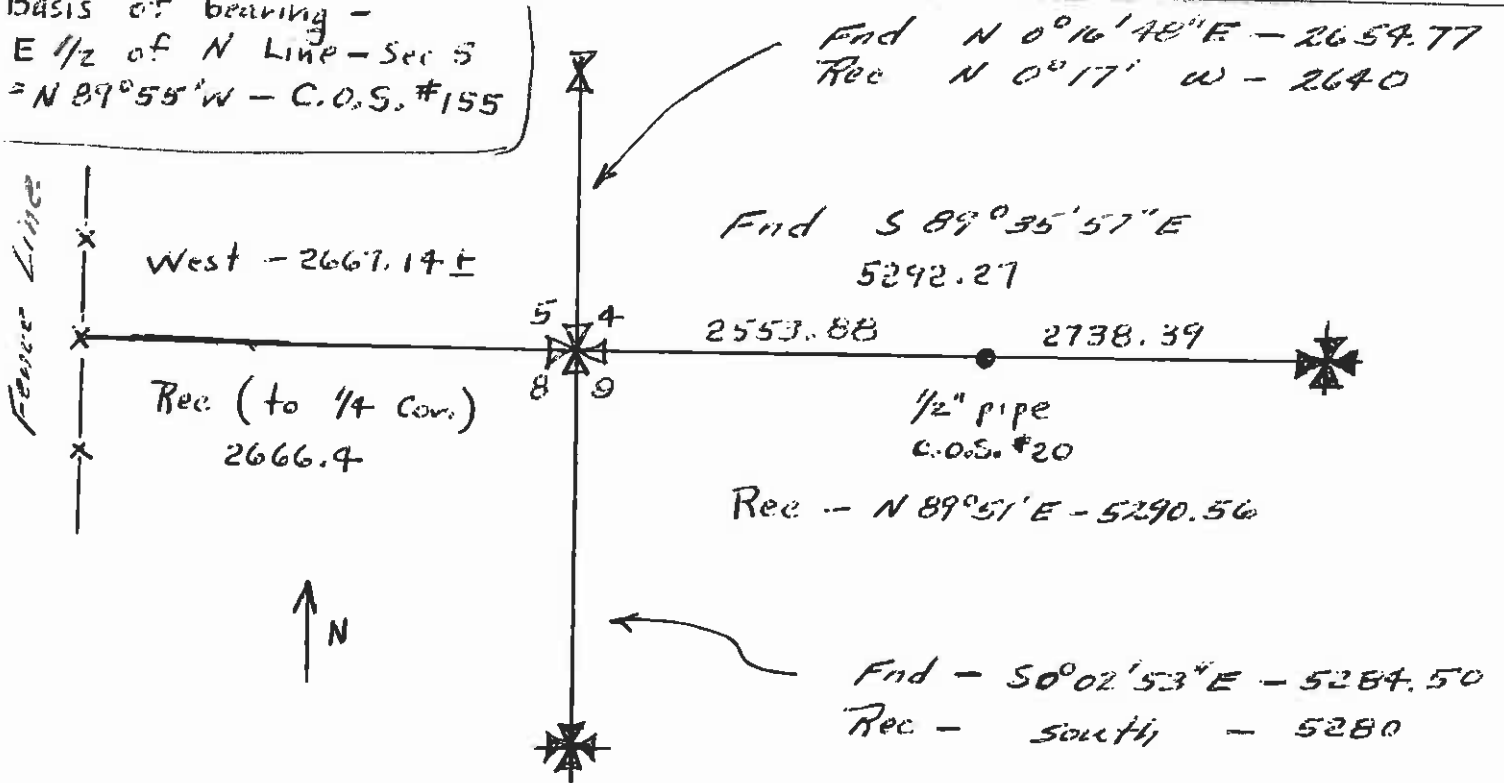
Corner SW Cor - Sec 4 T. 7N R. 9W P.M.M. Powell County

Orig 1868 field notes - set post in mound of earth with pits charred stake as per instructions.

No Marker found - re-established location determined from proportionate measurement between Found Sec. Cor. east of 1/4 Sec. line (property line) west on extended line of Markers from east Sec. Cor.

Set 5/8" x 24" rebar with 2" Alum Cap stamped "Masters - 821 S"

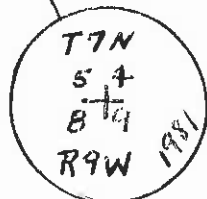
Basis of bearing -
E 1/2 of N Line - Sec 5
= N 89° 55' W - C.O.S. #155



4" Yellow Marker
Tag on fence
post,



189224



SKETCH OF CORNER

CERTIFICATION

I, _____
certify the information shown herein is true and correct.

Signature Ground Party Chief

RAY E. MASTERS

certify that this Corner Record correctly represents work performed by me or under my direction in compliance with the "Corner Recordation Act" (70-22-101, et seq., M.D.A.)

Ray E. Masters
Signature of Surveyor & Seal

Date: 12-22-81 Reg. No. 821 S

Employer: Self

Office of Clerk and Recorder, County of Powell. This "corner record" was filed for record on the December 28, day of 19 81 @ 9:50 A.M. was noted on the cross-index plat and is assigned page No. _____, in book No. _____

County Official

E 9 T. 7N R. 9W P.M.M.

Cross Index No. _____

Sec. 4

• - corner this sheet