

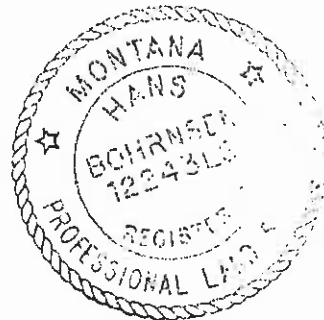
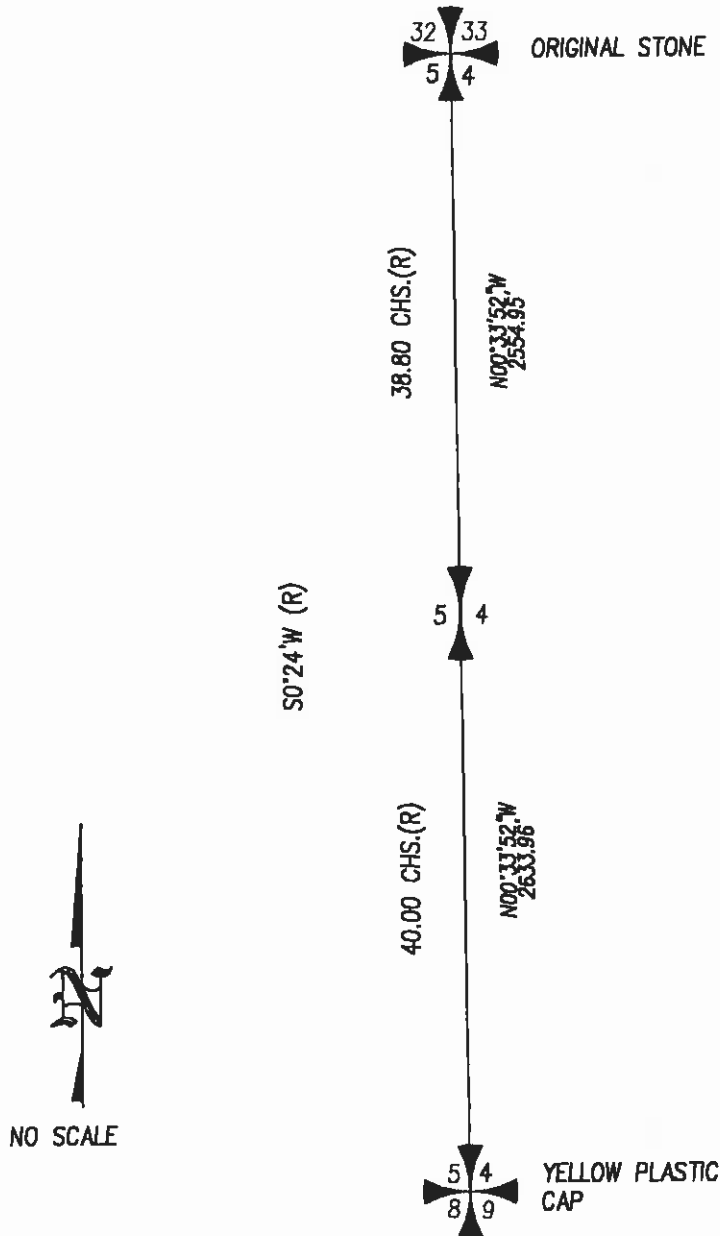
# CERTIFIED CORNER RECORDATION

Corner 1/4 SEC. CORNER T. 7N R. 14W P.M.M. GRANITE County

ORIGINAL RECORD: GEO. W. IRVINE, 1873: 38.80 CHS. SET A SANDSTONE, 18X9X4 IN MOUND OF STONES, THE SOIL BEING TOO ROCKY FOR PITS FOR 1/4 SEC. COR. MARKED 1/4 ON THE W. SIDE.

EVIDENCE FOUND: NO EVIDENCE OF CORNER OR MOUND.

PERPETUATION: BY SINGLE PROPORTION, SET A 5/8X24 IN. REBAR W/ 2 IN. ALUM. CAP.



CERTIFICATION	
1. <u>BRAD STURDEVANT</u>	
certify the information shown herein is true and correct.	
Signature Ground Party Chief	
<b>HANS BOHRNSEN</b>	
certify that this Corner Record correctly represents work performed by me or under my direction in compliance with the "Corner Recordation Act" (70-22-101, et seq., M.C.A.)	
Signature of Surveyor & Seal	
Date: <u>2/16/05</u>	Reg. No. <u>12243 LS</u>
Employer: <u>WILLOWROCK, INC.</u>	

SKETCH OF CORNER

**049588**

Recorded 03/08/2005 At 02:45 PM  
 BLANCHE PEDERSON, Cty Granite Clerk and Recorder  
 Fee: \$ , By Blanche Pederson

Cross Index No. C-9 T. 7N R. 14W P.M.M.

