

CERTIFIED LAND CORNER RECORDATION

DESCRIPTION OF CORNER EVIDENCE FOUND, AND ORIGINAL RECORD (IF KNOWN)

ORIGINAL RECORD: A CHARED POST SET DIAGONALLY WITH MOUND AND PITS. ALSO REFERENCE STATE HIGHWAY 348 PROJECT NO. S127(2) IN WHICH SECTION CORNER IS AT STATION 295+29.9 AND 10' TO RIGHT OF CENTERLINE.

EVIDENCE FOUND: NO ORIGINAL EVIDENCE FOUND. CORNER WAS REESTABLISHED USING CALL OF 10' OFF OF CENTERLINE AND FENCELINE RUNNING EAST AND WEST. FOUND WDB 3321S PLASTIC CAP ON WEST R/W LINE, UNDER FENCE, AS CLOSING CORNER.

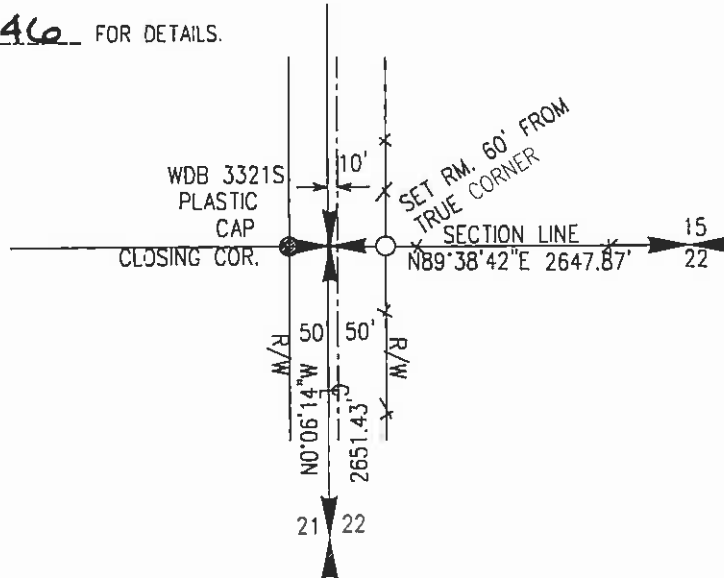
DESCRIPTION OF MONUMENT AND ACCESSORIES ESTABLISHED TO PERPETUATE THE ORIGINAL LOCATION OF THIS CORNER:

DATE OF WORK 1/98

Set 5/8 rebar with Aluminum cap as shown below. Put M.A.R.L.S. sign on fence corner nearby.

SKETCH, WITH COURSE AND DISTANCE TO ADJACENT CORNERS IF DETERMINED IN THIS SURVEY, (MAY SKETCH OR PASTE REPRODUCTION ON REVERSE SIDE).

SEE C.O.S. 546 FOR DETAILS.



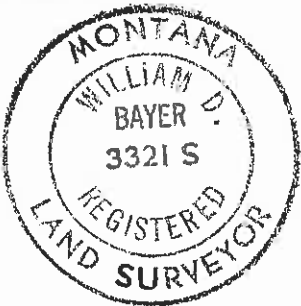
NOT TO SCALE

SURVEYOR'S SEAL

DIAGRAM OF CORNER

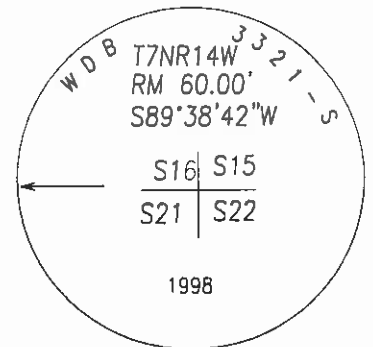
I, HANS BOHRNSEN, Certify that the information shown herein is true and correct.

Hans Bohrsen
Signature of ground party chief



I, William D. Boyer, certify that I have carefully performed or reviewed the work done on the diagrammed corner as reported on this recordation form and approve the same.

William D. Boyer
Signature of Surveyor
3321 S
Registration Number



SET REBAR WITH ALUMINUM CAP AS SHOWN ABOVE

Office of Clerk and Recorder, County of Granite

This "corner record" was filed for record on the 2nd day of Feb, 19 98, was noted on the cross index plot and is assigned page No. _____, in book No. _____ 2:53 PM

36648 *Blanche Pederson*
Signature of County Official

FILE: WCORS
Cross Index No. N13 sec. 15,16,21,22 T 7N R 14W