

CERTIFIED LAND CORNER RECORDATION

DESCRIPTION OF CORNER EVIDENCE FOUND, AND ORIGINAL RECORD (IF KNOWN)

ORIGINAL RECORD: GEO W. IRVINE, 1873: 40 CHS. SET A SANDSTONE 15X8X7 IN. 10 IN. IN THE GROUND FOR 1/4 SEC. COR. MARKED 1/4 ON THE N. SIDE. (NO ACCESSORIES)

EVIDENCE FOUND: FOUND NO EVIDENCE OF THE ORIGINAL STONE, A LARGE DRAINAGE CANAL WAS CONSTRUCTED OVER THE CORNER LOCATION. HIGHWAY RIGHT-OF-WAY PLANS AND NORTHERN PACIFIC RAILWAY PLANS CALL FOR THE CORNER LOCATION.

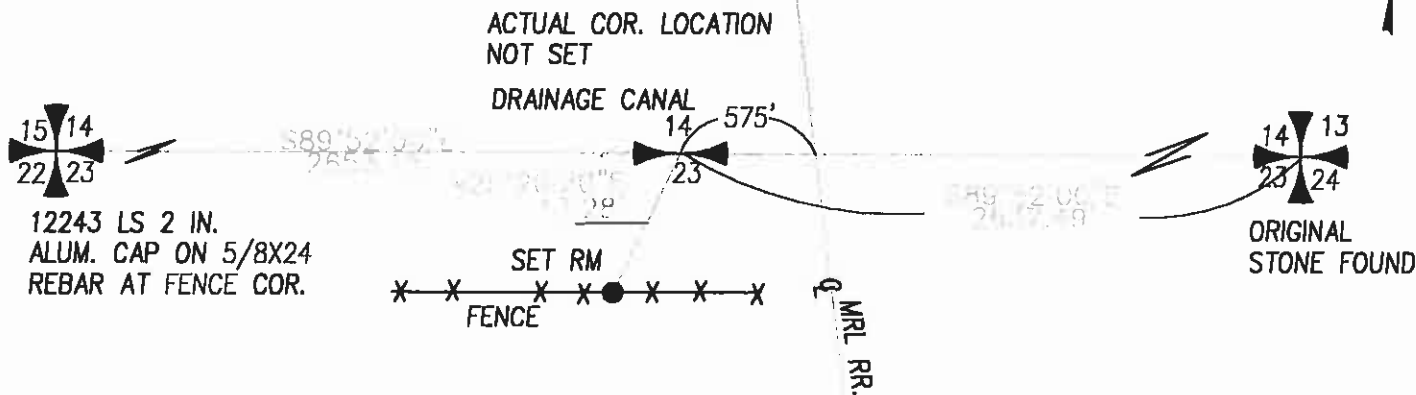
DESCRIPTION OF MONUMENT AND ACCESSORIES ESTABLISHED TO PERPETUATE THE ORIGINAL LOCATION OF THIS CORNER:

DATE OF WORK 7/03

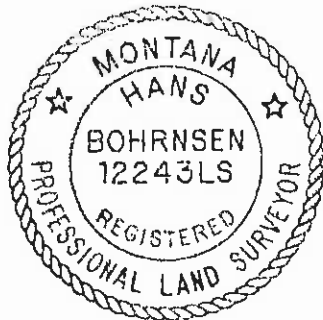
USING THE N.P.R.R. CALL OF 575 FEET FROM THE CENTERLINE OF THE RAILROAD TRACKS, SET A 5/8X24 IN. REBAR W/ 2 IN. ALUM CAP AS A REFERENCE MONUMENT TO THE CORNER. THE LOCATION FALLS WITHIN A DRAINAGE CANAL. PLACED YELLOW SIGN ON FENCEPOST AT REFERENCE MONUMENT.

SKETCH, WITH COURSE AND DISTANCE TO ADJACENT CORNERS IF DETERMINED IN THIS SURVEY,

SEE C.O.S. _____
NO SCALE



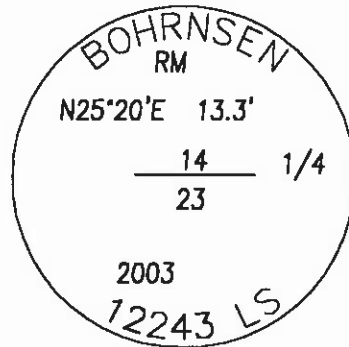
SURVEYOR'S SEAL



I, HANS BOHRNSEN, Certify that the information shown herein is true and correct.

Hans Bohrnsen
HANS BOHRNSEN 12243 LS

DIAGRAM OF CORNER:



SET REBAR WITH ALUMINUM CAP AS SHOWN ABOVE.

Office of Clerk and Recorder, County of _____

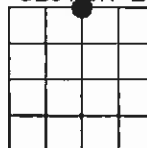
047943 Roll - Page -

Recorded 04/07/2004 At 11:18 AM
BLANCHE PEDERSON, Cty Granite Clerk and Recorder
Fee: \$, By *Blanche Pederson*

Signature of County Clerk

_____, 20____, was noted on the cross index

SECTION 23



● CORNER THIS SHEET

Cross Index No. N-19 sec. 23 T. 7N R. 14W