

INSTRUCTIONS

1. Original and/or subsequent record used to evaluate the corner position.
2. Description of evidence found, note discrepancies in the record, state method of establishing lost or obliterated corners.
3. Description of monument and accessories set to perpetuate the corner position.
4. Sketch of corner, show all pertinent data which can best be shown in a sketch example, corner marking, topography ties, position of accessories, etc.
5. Certification must be signed and sealed by Land Surveyor registered in the State of Montana.
6. Fill in Cross Index & Section Diagram at bottom of sheet.

CERTIFIED CORNER RECORDATION

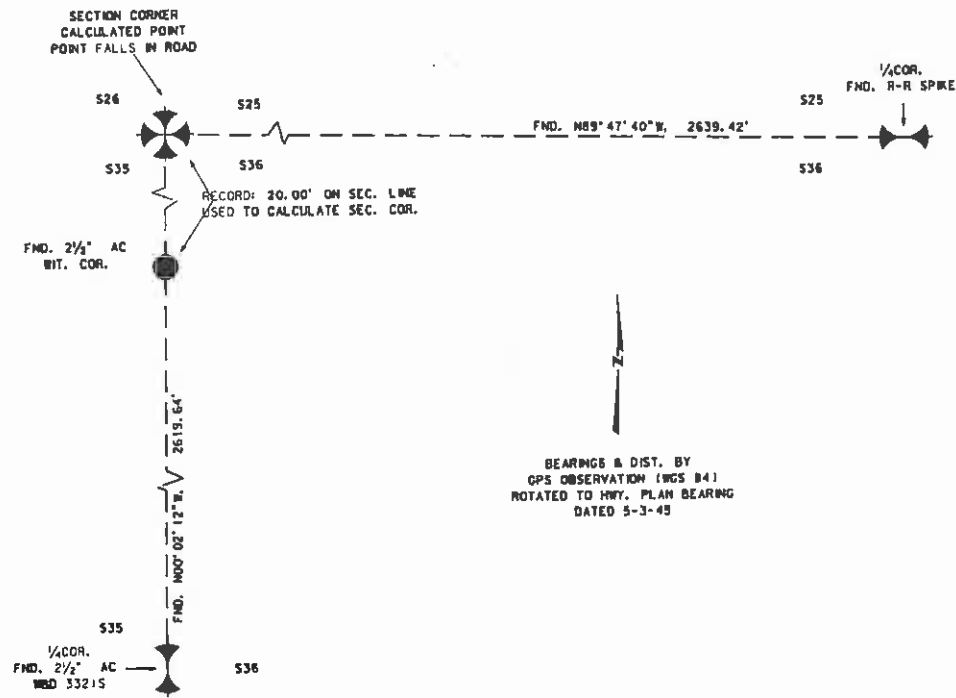
Corner NW. SEC. COR. SEC. 36 T. 7N., R. 14W. P.M.M. GRANITE County

RECORD

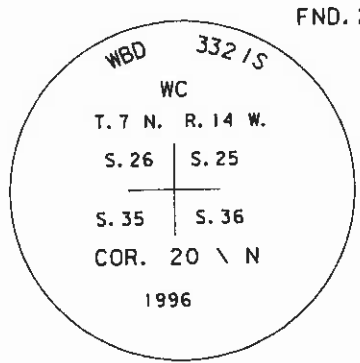
GLO – unknown
1945, FAP 175 (4) Highway plans shows a tie to "Section Corner"
Filed April 3, 1997, Corner Rec. 3321S, fnd. AC. for W.C. cor. 20' from true cor.
Filed Feb. 2, 1998, Corner Rec. 3321S, corner is within roadway, set 5/8" rebar with AC. for witness corner on section line 20' in distance from section corner.

FOUND

2 1/2" AC on 5/8" rebar, 0.5' above grade marked as shown in sketch.
Adjoining corners tied in survey shown below.



BEARINGS & DIST. BY
GPS OBSERVATION (WGS 84)
ROTATED TO HWY. PLAN BEARING
DATED 5-3-03



SKETCH OF CORNER

CERTIFICATION

I, Jim A. Turner
certify the information shown herein is true and correct.
Jim A. Turner
Signature of Ground Party Chief

I, Donald M. Roeder
certify that this Corner Record correctly represents work performed by me or under my direction in compliance with the Corner Recordation Act (70-22-101 et seq., MCA)
Donald M. Roeder
Signature of Surveyor/Seal

Date: 4/23/01 Reg. No. 10999LS
Employer: MDT

Office of Clerk and Recorder, County of Granite, This "corner record" was filed for record on May 31, 2001 10:11 AM, was noted on the cross-index plat, and is assigned Page No. _____, in Book No. _____.

Blanche Pederson
County Official

Sec. 36		

● — Corner this sheet

42748

Cross Index No. V. 21 T. 7N. R. 14W. P.M.M.